

Datasheet for ABIN7165140
anti-BICD2 antibody (AA 511-625)



[Go to Product page](#)

3 Images

Overview

Quantity:	100 µg
Target:	BICD2
Binding Specificity:	AA 511-625
Reactivity:	Human
Host:	Rabbit
Clonality:	Polyclonal
Conjugate:	This BICD2 antibody is un-conjugated
Application:	Western Blotting (WB), ELISA, Immunohistochemistry (IHC), Immunofluorescence (IF)

Product Details

Immunogen:	Recombinant Human Protein bicaudal D homolog 2 protein (511-625AA)
Isotype:	IgG
Cross-Reactivity:	Human
Purification:	>95%, Protein G purified

Target Details

Target:	BICD2
Alternative Name:	BICD2 (BICD2 Products)
Background:	Background: Acts as an adapter protein linking the dynein motor complex to various cargos and converts dynein from a non-processive to a highly processive motor in the presence of

Target Details

dynactin. Facilitates and stabilizes the interaction between dynein and dynactin and activates dynein processivity (the ability to move along a microtubule for a long distance without falling off the track) (By similarity). Facilitates the binding of RAB6A to the Golgi by stabilizing its GTP-bound form. Regulates coat complex coatamer protein I (COPI)-independent Golgi-endoplasmic reticulum transport via its interaction with RAB6A and recruitment of the dynein-dynactin motor complex (PubMed:25962623). Contributes to nuclear and centrosomal positioning prior to mitotic entry through regulation of both dynein and kinesin-1. During G2 phase of the cell cycle, associates with RANBP2 at the nuclear pores and recruits dynein and dynactin to the nuclear envelope to ensure proper positioning of the nucleus relative to centrosomes prior to the onset of mitosis (By similarity).

Aliases: bA526D8.1 antibody, Bic D 2 antibody, Bic-D 2 antibody, Bicaudal D homolog 2 (Drosophila) antibody, Bicaudal D homolog 2 antibody, Bcd2 antibody, BICD2_HUMAN antibody, Coiled coil protein BICD2 antibody, Cytoskeleton like bicaudal D protein homolog 2 antibody, Homolog of Drosophila bicaudal D antibody, KIAA0699 antibody, Protein bicaudal D homolog 2 antibody

UniProt: [Q8TD16](#)

Pathways: [Maintenance of Protein Location](#)

Application Details

Application Notes: Recommended dilution: WB:1:500-1:5000, IHC:1:500-1:1000, IF:1:50-1:200,

Restrictions: For Research Use only

Handling

Format: Liquid

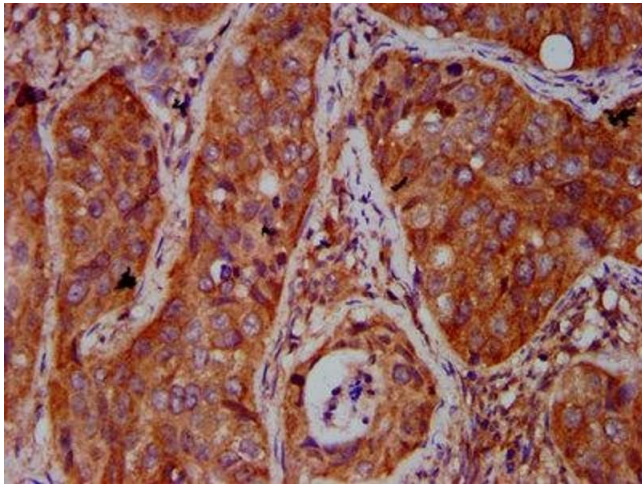
Buffer: Preservative: 0.03 % Proclin 300
Constituents: 50 % Glycerol, 0.01M PBS, pH 7.4

Preservative: ProClin

Precaution of Use: This product contains ProClin: a POISONOUS AND HAZARDOUS SUBSTANCE which should be handled by trained staff only.

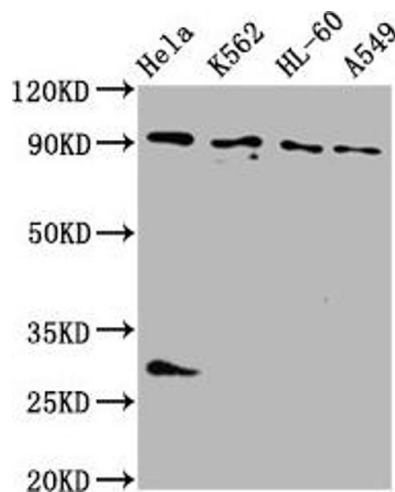
Storage: -20 °C,-80 °C

Storage Comment: Upon receipt, store at -20°C or -80°C. Avoid repeated freeze.



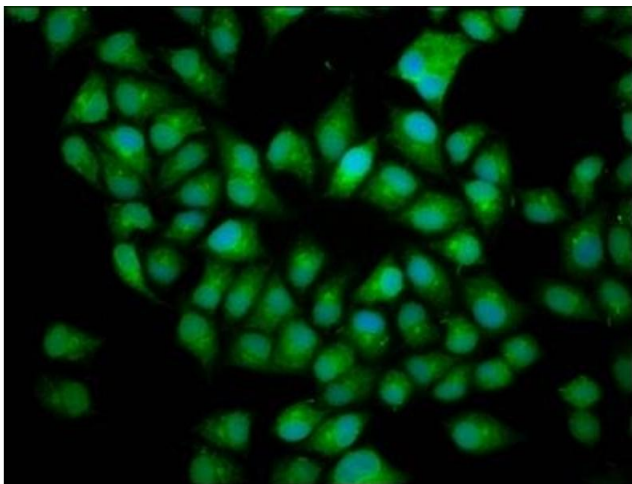
Immunohistochemistry

Image 1. IHC image of ABIN7165140 diluted at 1:500 and staining in paraffin-embedded human cervical cancer performed on a Leica Bond™ system. After dewaxing and hydration, antigen retrieval was mediated by high pressure in a citrate buffer (pH 6.0). Section was blocked with 10% normal goat serum 30min at RT. Then primary antibody (1% BSA) was incubated at 4°C overnight. The primary is detected by a biotinylated secondary antibody and visualized using an HRP conjugated SP system.



Western Blotting

Image 2. Western Blot Positive WB detected in: HeLa whole cell lysate, K562 whole cell lysate, HL60 whole cell lysate, A549 whole cell lysate All lanes: BICD2 antibody at 4 µg/mL Secondary Goat polyclonal to rabbit IgG at 1/50000 dilution Predicted band size: 94, 97 kDa Observed band size: 94 kDa



Immunofluorescence

Image 3. Immunofluorescence staining of HeLa cells with ABIN7165140 at 1:166, counter-stained with DAPI. The cells were fixed in 4% formaldehyde, permeabilized using 0.2% Triton X-100 and blocked in 10% normal Goat Serum. The cells were then incubated with the antibody overnight at 4°C. The secondary antibody was Alexa Fluor 488-conjugated AffiniPure Goat Anti-Rabbit IgG(H+L).