



[Go to Product page](#)

Datasheet for ABIN7165184
anti-CUX1 antibody (AA 50-210)

2 Images

Overview

Quantity:	100 µg
Target:	CUX1
Binding Specificity:	AA 50-210
Reactivity:	Human
Host:	Rabbit
Clonality:	Polyclonal
Conjugate:	This CUX1 antibody is un-conjugated
Application:	Western Blotting (WB), ELISA, Immunohistochemistry (IHC)

Product Details

Immunogen:	Recombinant Human Protein CASP protein (50-210AA)
Isotype:	IgG
Cross-Reactivity:	Human, Mouse, Rat
Purification:	>95%, Protein G purified

Target Details

Target:	CUX1
Alternative Name:	CUX1 (CUX1 Products)
Background:	Background: May be involved in intra-Golgi retrograde transport. Aliases: CASP_HUMAN antibody, CUX1 antibody, Protein CASP antibody

Target Details

UniProt: [Q13948](#)

Pathways: [Cellular Glucan Metabolic Process](#)

Application Details

Application Notes: Recommended dilution: WB:1:500-1:5000, IHC:1:200-1:500,

Restrictions: For Research Use only

Handling

Format: Liquid

Buffer: Preservative: 0.03 % Proclin 300
Constituents: 50 % Glycerol, 0.01M PBS, pH 7.4

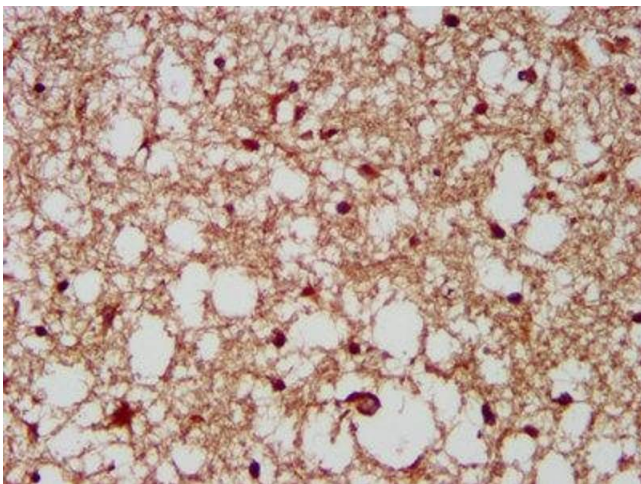
Preservative: ProClin

Precaution of Use: This product contains ProClin: a POISONOUS AND HAZARDOUS SUBSTANCE which should be handled by trained staff only.

Storage: -20 °C,-80 °C

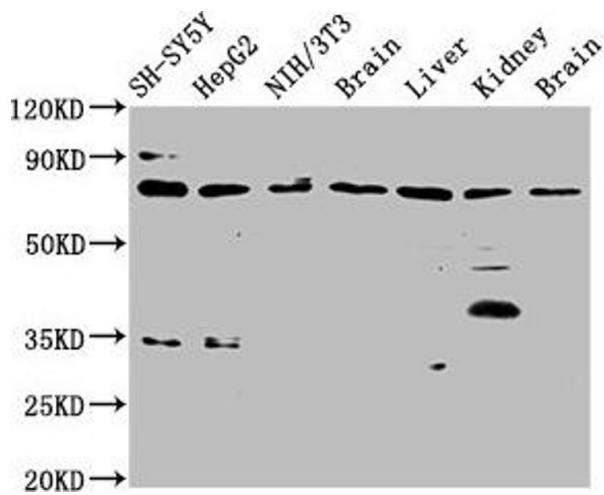
Storage Comment: Upon receipt, store at -20°C or -80°C. Avoid repeated freeze.

Images



Immunohistochemistry

Image 1. IHC image of ABIN7165184 diluted at 1:200 and staining in paraffin-embedded human brain tissue performed on a Leica Bond™ system. After dewaxing and hydration, antigen retrieval was mediated by high pressure in a citrate buffer (pH 6.0). Section was blocked with 10% normal goat serum 30min at RT. Then primary antibody (1% BSA) was incubated at 4°C overnight. The primary is detected by a biotinylated secondary antibody and visualized using an HRP conjugated SP system.



Western Blotting

Image 2. Western Blot Positive WB detected in: SH-SY5Y whole cell lysate, HepG2 whole cell lysate, NIH/3T3 whole cell lysate, Rat brain tissue, Rat liver tissue, Rat kidney tissue, Mouse brain tissue All lanes: CUX1 antibody at 3.7 μ g/mL Secondary Goat polyclonal to rabbit IgG at 1/50000 dilution Predicted band size: 78, 73, 165, 162, 166, 154, 158, 148, 76 kDa Observed band size: 78 kDa