



[Go to Product page](#)

Datasheet for ABIN7165205  
**anti-CLN8 antibody (AA 247-286)**

1 Image

### Overview

Quantity:	100 µg
Target:	CLN8
Binding Specificity:	AA 247-286
Reactivity:	Human
Host:	Rabbit
Clonality:	Polyclonal
Conjugate:	This CLN8 antibody is un-conjugated
Application:	ELISA, Immunohistochemistry (IHC)

### Product Details

Immunogen:	Recombinant Human Protein CLN8 protein (247-286AA)
Isotype:	IgG
Cross-Reactivity:	Human
Purification:	>95%, Protein G purified

### Target Details

Target:	CLN8
Alternative Name:	CLN8 ( <a href="#">CLN8 Products</a> )
Background:	Background: Could play a role in cell proliferation during neuronal differentiation and in protection against cell death.

## Target Details

Aliases: CLN8 antibody, C8orf61 antibody, Protein CLN8 antibody

UniProt: [Q9UBY8](#)

Pathways: [Regulation of Cell Size](#), [Dicarboxylic Acid Transport](#)

## Application Details

Application Notes: Recommended dilution: IHC:1:20-1:200,

Restrictions: For Research Use only

## Handling

Format: Liquid

Buffer: Preservative: 0.03 % Proclin 300  
Constituents: 50 % Glycerol, 0.01M PBS, pH 7.4

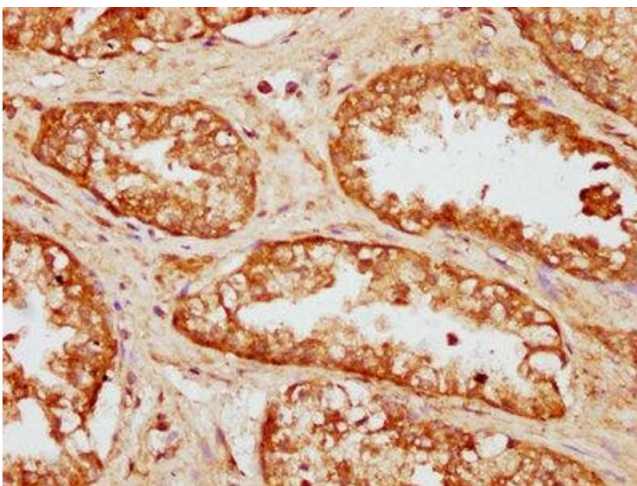
Preservative: ProClin

Precaution of Use: This product contains ProClin: a POISONOUS AND HAZARDOUS SUBSTANCE which should be handled by trained staff only.

Storage: -20 °C,-80 °C

Storage Comment: Upon receipt, store at -20°C or -80°C. Avoid repeated freeze.

## Images



### Immunohistochemistry

**Image 1.** IHC image of ABIN7165205 diluted at 1:100 and staining in paraffin-embedded human prostate cancer performed on a Leica Bond™ system. After dewaxing and hydration, antigen retrieval was mediated by high pressure in a citrate buffer (pH 6.0). Section was blocked with 10 % normal goat serum 30 min at RT. Then primary antibody (1 % BSA) was incubated at 4 °C overnight. The primary is detected by a biotinylated secondary antibody and visualized using an HRP conjugated SP system.