



[Go to Product page](#)

Datasheet for ABIN7165221
anti-CRB1 antibody (AA 20-200)

2 Images

Overview

Quantity:	100 µL
Target:	CRB1
Binding Specificity:	AA 20-200
Reactivity:	Human
Host:	Rabbit
Clonality:	Polyclonal
Conjugate:	This CRB1 antibody is un-conjugated
Application:	ELISA, Immunohistochemistry (IHC), Immunofluorescence (IF)

Product Details

Immunogen:	Recombinant Human Protein crumbs homolog 1 protein (20-200AA)
Isotype:	IgG
Cross-Reactivity:	Human
Purification:	Antigen Affinity Purified

Target Details

Target:	CRB1
Alternative Name:	CRB1 (CRB1 Products)
Background:	Background: Plays a role in photoreceptor morphogenesis in the retina. May maintain cell polarization and adhesion.

Target Details

Aliases: CRB1 antibody, CRUM1_HUMAN antibody, Protein crumbs homolog 1 antibody

UniProt: [P82279](#)

Pathways: [Notch Signaling](#)

Application Details

Application Notes: Recommended dilution: IHC:1:20-1:200, IF:1:10-1:100,

Restrictions: For Research Use only

Handling

Format: Liquid

Buffer: PBS with 0.02 % sodium azide, 50 % glycerol, pH 7.3.

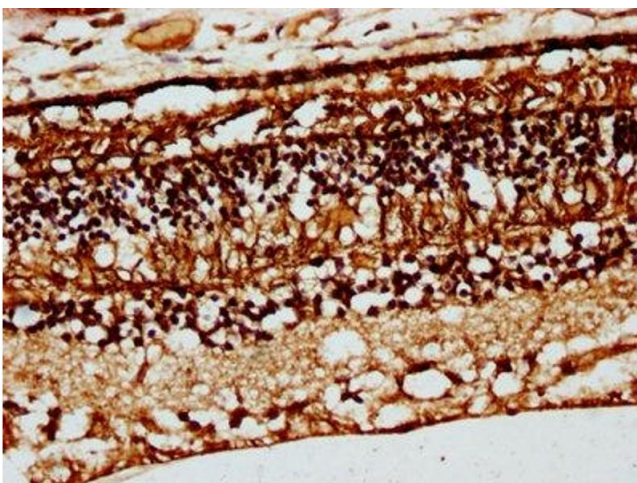
Preservative: Sodium azide

Precaution of Use: This product contains Sodium azide: a POISONOUS AND HAZARDOUS SUBSTANCE which should be handled by trained staff only.

Storage: -20 °C,-80 °C

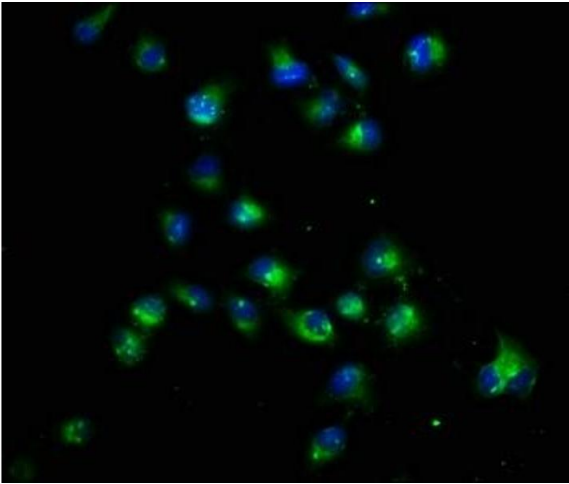
Storage Comment: Upon receipt, store at -20°C or -80°C. Avoid repeated freeze.

Images



Immunohistochemistry

Image 1. IHC image of ABIN7165221 diluted at 1:66 and staining in paraffin-embedded human eye tissue performed on a Leica Bond™ system. After dewaxing and hydration, antigen retrieval was mediated by high pressure in a citrate buffer (pH 6.0). Section was blocked with 10% normal goat serum 30min at RT. Then primary antibody (1% BSA) was incubated at 4°C overnight. The primary is detected by a biotinylated secondary antibody and visualized using an HRP conjugated SP system.



Immunofluorescence

Image 2. Immunofluorescence staining of HeLa cells with ABIN7165221 at 1:22, counter-stained with DAPI. The cells were fixed in 4% formaldehyde, permeabilized using 0.2% Triton X-100 and blocked in 10% normal Goat Serum. The cells were then incubated with the antibody overnight at 4°C. The secondary antibody was Alexa Fluor 488-conjugated AffiniPure Goat Anti-Rabbit IgG(H+L).