

Datasheet for ABIN7165222  
**anti-CRB2 antibody (AA 253-483)**[Go to Product page](#)

## 1 Image

## Overview

Quantity:	100 µg
Target:	CRB2
Binding Specificity:	AA 253-483
Reactivity:	Human
Host:	Rabbit
Clonality:	Polyclonal
Conjugate:	This CRB2 antibody is un-conjugated
Application:	ELISA, Immunohistochemistry (IHC)

## Product Details

Immunogen:	Recombinant Human Protein crumbs homolog 2 protein (253-483AA)
Isotype:	IgG
Cross-Reactivity:	Human
Purification:	>95%, Protein G purified

## Target Details

Target:	CRB2
Alternative Name:	CRB2 ( <a href="#">CRB2 Products</a> )
Background:	Background: May play a role in polarized cells morphogenesis. Aliases: Crb2 antibody, CRUM2_HUMAN antibody, Crumbs homolog 2 (Drosophila) antibody,

## Target Details

Crumbs homolog 2 antibody, Crumbs-like protein 2 antibody, RP11-230L22.2 antibody

UniProt: [Q5IJ48](#)

Pathways: [Notch Signaling](#)

## Application Details

Application Notes: Recommended dilution: IHC:1:1000-1:2000,

Restrictions: For Research Use only

## Handling

Format: Liquid

Buffer: Preservative: 0.03 % Proclin 300  
Constituents: 50 % Glycerol, 0.01M PBS, PH 7.4

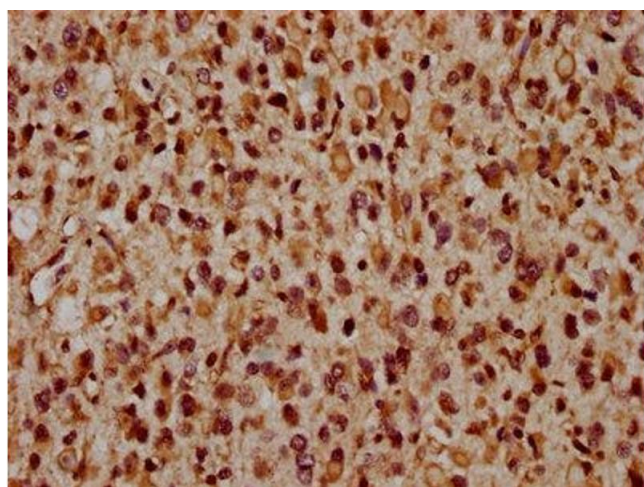
Preservative: ProClin

Precaution of Use: This product contains ProClin: a POISONOUS AND HAZARDOUS SUBSTANCE which should be handled by trained staff only.

Storage: -20 °C,-80 °C

Storage Comment: Upon receipt, store at -20°C or -80°C. Avoid repeated freeze.

## Images



### Immunohistochemistry

**Image 1.** IHC image of ABIN7165222 diluted at 1:1600 and staining in paraffin-embedded human glioma performed on a Leica Bond™ system. After dewaxing and hydration, antigen retrieval was mediated by high pressure in a citrate buffer (pH 6.0). Section was blocked with 10 % normal goat serum 30 min at RT. Then primary antibody (1 % BSA) was incubated at 4 °C overnight. The primary is detected by a biotinylated secondary antibody and visualized using an HRP conjugated SP system.