



[Go to Product page](#)

Datasheet for ABIN7165226
anti-CUTA antibody (AA 33-150)

3 Images

Overview

Quantity:	100 µg
Target:	CUTA
Binding Specificity:	AA 33-150
Reactivity:	Human
Host:	Rabbit
Clonality:	Polyclonal
Conjugate:	This CUTA antibody is un-conjugated
Application:	ELISA, Immunohistochemistry (IHC), Immunofluorescence (IF)

Product Details

Immunogen:	Recombinant Human Protein CutA protein (33-150AA)
Isotype:	IgG
Cross-Reactivity:	Human
Purification:	>95%, Protein G purified

Target Details

Target:	CUTA
Alternative Name:	CUTA (CUTA Products)
Background:	Background: May form part of a complex of membrane proteins attached to acetylcholinesterase (AChE).

Target Details

Aliases: Acetylcholinesterase Associated Protein antibody, Acetylcholinesterase-associated protein antibody, ACHAP antibody, Brain acetylcholinesterase putative membrane anchor antibody, C6ORF82 antibody, cutA antibody, CutA Divalent Cation Tolerance Homolog antibody, cutA divalent cation tolerance homolog (E. coli) antibody, CUTA_HUMAN antibody, CutA1 antibody, divalent cation tolerant protein CUTA antibody, MGC111154 antibody, OTTHUMP00000039621 antibody, Protein CutA antibody, RP4570F34 antibody

UniProt: [O60888](#)

Application Details

Application Notes: Recommended dilution: IHC:1:20-1:200, IF:1:50-1:200,

Restrictions: For Research Use only

Handling

Format: Liquid

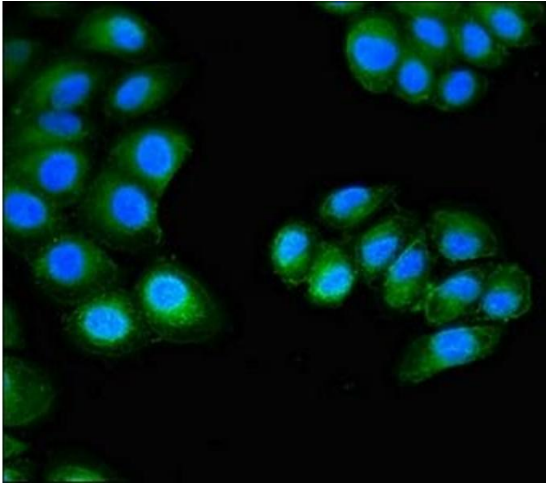
Buffer: Preservative: 0.03 % Proclin 300
Constituents: 50 % Glycerol, 0.01M PBS, pH 7.4

Preservative: ProClin

Precaution of Use: This product contains ProClin: a POISONOUS AND HAZARDOUS SUBSTANCE which should be handled by trained staff only.

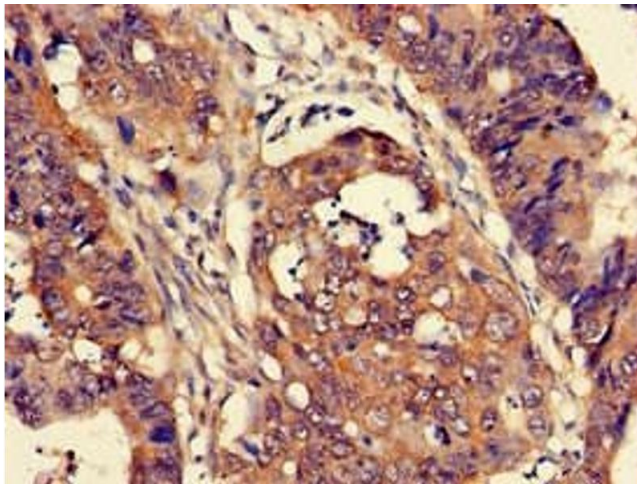
Storage: -20 °C,-80 °C

Storage Comment: Upon receipt, store at -20°C or -80°C. Avoid repeated freeze.



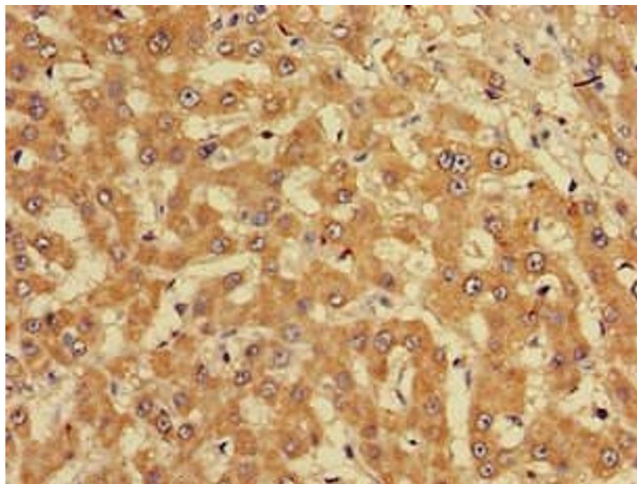
Immunofluorescence

Image 1. Immunofluorescent analysis of A549 cells using ABIN7165226 at dilution of 1:100 and Alexa Fluor 488-conjugated AffiniPure Goat Anti-Rabbit IgG(H+L)



Immunohistochemistry

Image 2. Immunohistochemistry of paraffin-embedded human colon cancer using ABIN7165226 at dilution of 1:100



Immunohistochemistry

Image 3. Immunohistochemistry of paraffin-embedded human liver cancer using ABIN7165226 at dilution of 1:100