

Datasheet for ABIN7165238  
**anti-CYR61 antibody (AA 25-381)**[Go to Product page](#)

## 1 Image

## Overview

Quantity:	100 µg
Target:	CYR61
Binding Specificity:	AA 25-381
Reactivity:	Human
Host:	Rabbit
Clonality:	Polyclonal
Conjugate:	This CYR61 antibody is un-conjugated
Application:	Immunohistochemistry (IHC), ELISA

## Product Details

Immunogen:	Recombinant Human Protein CYR61 protein (25-381AA)
Isotype:	IgG
Cross-Reactivity:	Human
Purification:	>95%, Protein G purified

## Target Details

Target:	CYR61
Alternative Name:	CYR61 ( <a href="#">CYR61 Products</a> )
Background:	Background: Promotes cell proliferation, chemotaxis, angiogenesis and cell adhesion. Appears to play a role in wound healing by up-regulating, in skin fibroblasts, the expression of a number

## Target Details

of genes involved in angiogenesis, inflammation and matrix remodeling including VEGA-A, VEGA-C, MMP1, MMP3, TIMP1, uPA, PAI-1 and integrins alpha-3 and alpha-5. CYR61-mediated gene regulation is dependent on heparin-binding. Down-regulates the expression of alpha-1 and alpha-2 subunits of collagen type-1. Promotes cell adhesion and adhesive signaling through integrin alpha-6/beta-1, cell migration through integrin alpha-v/beta-5 and cell proliferation through integrin alpha-v/beta-3.

Aliases: 3CH61 antibody, CCN 1 antibody, CCN family member 1 antibody, CCN1 antibody, CYR 61 antibody, Cyr61 antibody, CYR61 protein antibody, CYR61\_HUMAN antibody, Cysteine rich angiogenic inducer 61 antibody, Cysteine rich heparin binding protein 61 antibody, Cysteine-rich angiogenic inducer 61 antibody, GIG 1 antibody, GIG1 antibody, IBP-10 antibody, IGF-binding protein 10 antibody, Igfbp 10 antibody, IGFBP-10 antibody, Igfbp10 antibody, Insulin like growth factor binding protein 10 antibody, Insulin-like growth factor-binding protein 10 antibody, Protein CYR61 antibody, Protein GIG1 antibody

UniProt: [O00622](#)

Pathways: [Positive Regulation of Endopeptidase Activity](#), [Growth Factor Binding](#)

## Application Details

Application Notes: Recommended dilution: IHC:1:20-1:200,

Restrictions: For Research Use only

## Handling

Format: Liquid

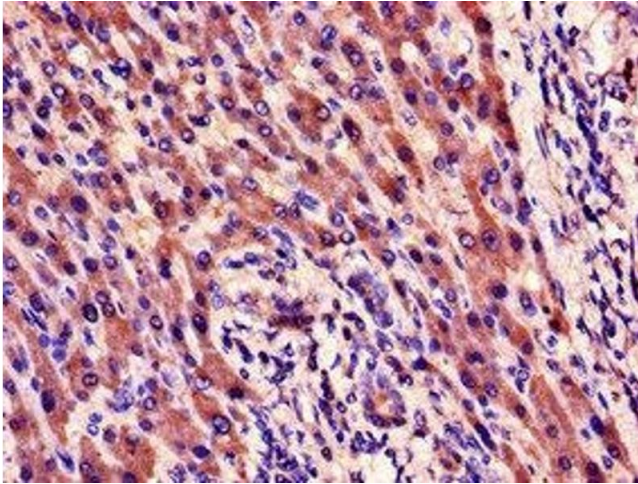
Buffer: Preservative: 0.03 % Proclin 300  
Constituents: 50 % Glycerol, 0.01M PBS, PH 7.4

Preservative: ProClin

Precaution of Use: This product contains ProClin: a POISONOUS AND HAZARDOUS SUBSTANCE which should be handled by trained staff only.

Storage: -20 °C,-80 °C

Storage Comment: Upon receipt, store at -20°C or -80°C. Avoid repeated freeze.



#### Immunohistochemistry

**Image 1.** Immunohistochemistry of paraffin-embedded human liver cancer using ABIN7165238 at dilution of 1:100