

Datasheet for ABIN7165254
anti-DLK1 antibody (AA 24-303)[Go to Product page](#)

3 Images

Overview

Quantity:	100 µg
Target:	DLK1
Binding Specificity:	AA 24-303
Reactivity:	Human
Host:	Rabbit
Clonality:	Polyclonal
Conjugate:	This DLK1 antibody is un-conjugated
Application:	Western Blotting (WB), ELISA, Immunohistochemistry (IHC), Immunofluorescence (IF)

Product Details

Immunogen:	Recombinant Human Protein delta homolog 1 protein (24-303AA)
Isotype:	IgG
Cross-Reactivity:	Human, Rat
Purification:	>95%, Protein G purified

Target Details

Target:	DLK1
Alternative Name:	DLK1 (DLK1 Products)
Background:	Background: May have a role in neuroendocrine differentiation. Aliases: Adipocyte differentiation inhibitor protein antibody, Breveldtin antibody, Delta like 1

Target Details

homolog antibody, Delta like homolog antibody, Delta like protein antibody, Delta1 antibody, DLK 1 antibody, DLK antibody, DLK-1 antibody, DLK1 antibody, DLK1_HUMAN antibody, FA 1 antibody, FA1 antibody, Fetal antigen 1 antibody, pG2 antibody, Preadipocyte factor 1 antibody, Pref 1 antibody, Pref antibody, Pref1 antibody, Protein delta homolog 1 antibody, Secredeltin antibody, ZOG antibody

UniProt: [P80370](#)

Application Details

Application Notes: Recommended dilution: WB:1:500-1:5000, IHC:1:200-1:500, IF:1:50-1:200,

Restrictions: For Research Use only

Handling

Format: Liquid

Buffer: Preservative: 0.03 % Proclin 300
Constituents: 50 % Glycerol, 0.01M PBS, PH 7.4

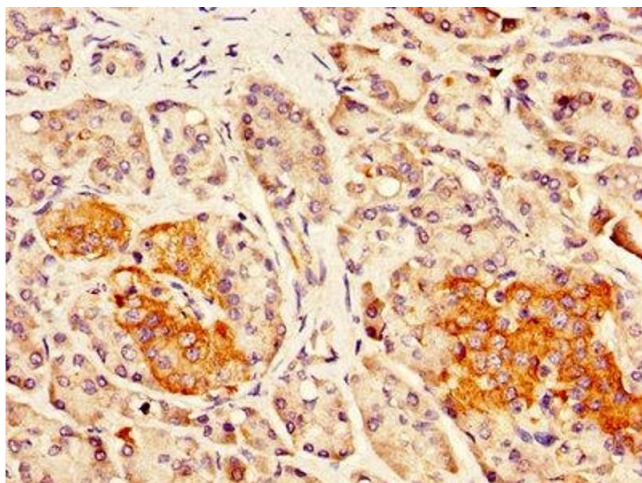
Preservative: ProClin

Precaution of Use: This product contains ProClin: a POISONOUS AND HAZARDOUS SUBSTANCE which should be handled by trained staff only.

Storage: -20 °C,-80 °C

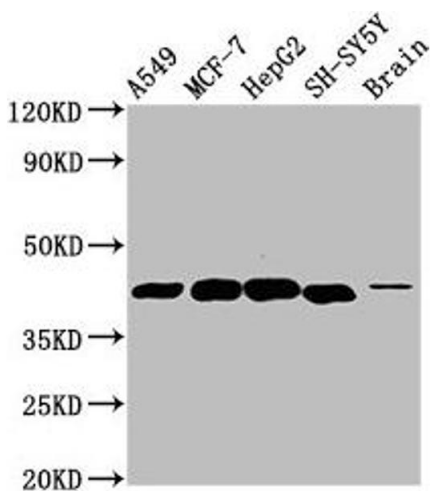
Storage Comment: Upon receipt, store at -20°C or -80°C. Avoid repeated freeze.

Images



Immunohistochemistry

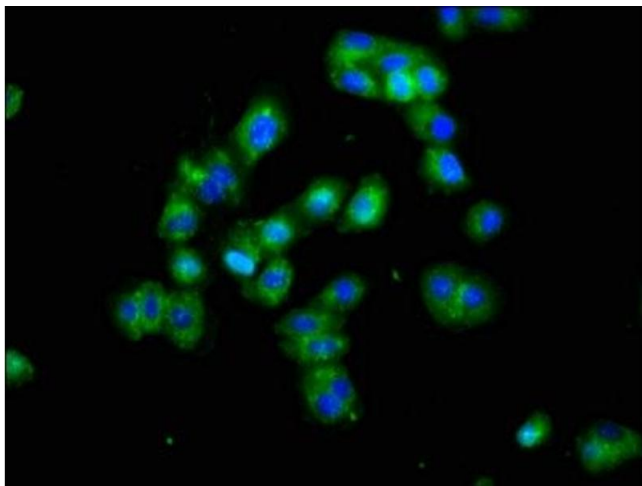
Image 1. IHC image of ABIN7165254 diluted at 1:300 and staining in paraffin-embedded human pancreatic tissue performed on a Leica Bond™ system. After dewaxing and hydration, antigen retrieval was mediated by high pressure in a citrate buffer (pH 6.0). Section was blocked with 10% normal goat serum 30min at RT. Then primary antibody (1% BSA) was incubated at 4°C overnight. The primary is detected by a biotinylated secondary antibody and



visualized using an HRP conjugated SP system.

Western Blotting

Image 2. Western Blot Positive WB detected in: A549 whole cell lysate, MCF-7 whole cell lysate, HepG2 whole cell lysate, SH-SY5Y whole cell lysate, Rat brain tissue All lanes: DLK1 antibody at 4.6 µg/mL Secondary Goat polyclonal to rabbit IgG at 1/50000 dilution Predicted band size: 42, 34 kDa Observed band size: 42 kDa



Immunofluorescence

Image 3. Immunofluorescence staining of HepG2 cells with ABIN7165254 at 1:100, counter-stained with DAPI. The cells were fixed in 4% formaldehyde, permeabilized using 0.2% Triton X-100 and blocked in 10% normal Goat Serum. The cells were then incubated with the antibody overnight at 4°C. The secondary antibody was Alexa Fluor 488-conjugated AffiniPure Goat Anti-Rabbit IgG(H+L).