

Datasheet for ABIN7165313  
**anti-ECT2 antibody (AA 283-453)**

3 Images



[Go to Product page](#)

## Overview

Quantity:	100 µg
Target:	ECT2
Binding Specificity:	AA 283-453
Reactivity:	Human
Host:	Rabbit
Clonality:	Polyclonal
Conjugate:	This ECT2 antibody is un-conjugated
Application:	Western Blotting (WB), ELISA, Immunohistochemistry (IHC), Immunoprecipitation (IP)

## Product Details

Immunogen:	Recombinant Human Protein ECT2 protein (283-453AA)
Isotype:	IgG
Cross-Reactivity:	Human
Purification:	>95%, Protein G purified

## Target Details

Target:	ECT2
Alternative Name:	ECT2 ( <a href="#">ECT2 Products</a> )
Background:	Background: Guanine nucleotide exchange factor (GEF) that catalyzes the exchange of GDP for GTP. Promotes guanine nucleotide exchange on the Rho family members of small GTPases,

## Target Details

like RHOA, RHOC, RAC1 and CDC42. Required for signal transduction pathways involved in the regulation of cytokinesis. Component of the centralspindlin complex that serves as a microtubule-dependent and Rho-mediated signaling required for the myosin contractile ring formation during the cell cycle cytokinesis. Regulates the translocation of RHOA from the central spindle to the equatorial region. Plays a role in the control of mitotic spindle assembly, regulates the activation of CDC42 in metaphase for the process of spindle fibers attachment to kinetochores before chromosome congression. Involved in the regulation of epithelial cell polarity, participates in the formation of epithelial tight junctions in a polarity complex PARD3-PARD6-protein kinase PRKCQ-dependent manner. Plays a role in the regulation of neurite outgrowth. Inhibits phenobarbital (PB)-induced NR1I3 nuclear translocation. Stimulates the activity of RAC1 through its association with the oncogenic PARD6A-PRKCI complex in cancer cells, thereby acting to coordinately drive tumor cell proliferation and invasion. Also stimulates genotoxic stress-induced RHOB activity in breast cancer cells leading to their cell death.

Aliases: ECT2Protein ECT2 antibody, Epithelial cell-transforming sequence 2 oncogene antibody

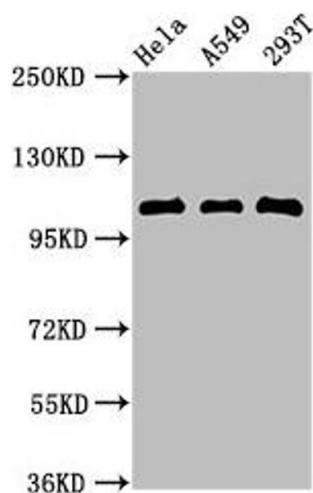
UniProt:	<a href="#">Q9H8V3</a>
Pathways:	<a href="#">Neurotrophin Signaling Pathway</a> , <a href="#">Cell-Cell Junction Organization</a>

## Application Details

Application Notes:	Recommended dilution: WB:1:500-1:5000, IHC:1:500-1:1000, IP:1:200-1:2000,
Restrictions:	For Research Use only

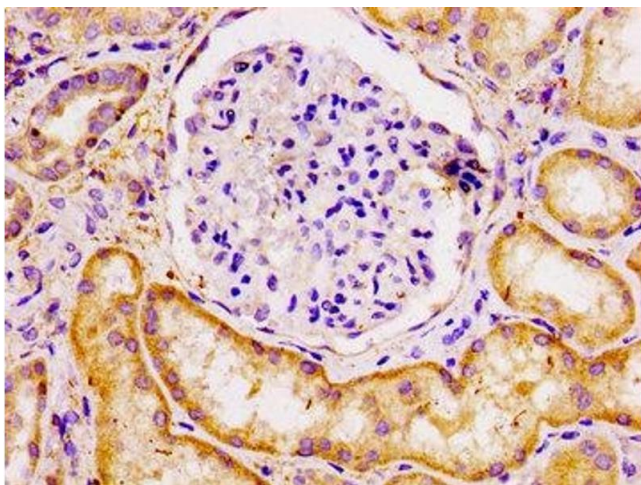
## Handling

Format:	Liquid
Buffer:	Preservative: 0.03 % Proclin 300 Constituents: 50 % Glycerol, 0.01M PBS, pH 7.4
Preservative:	ProClin
Precaution of Use:	This product contains ProClin: a POISONOUS AND HAZARDOUS SUBSTANCE which should be handled by trained staff only.
Storage:	-20 °C,-80 °C
Storage Comment:	Upon receipt, store at -20°C or -80°C. Avoid repeated freeze.



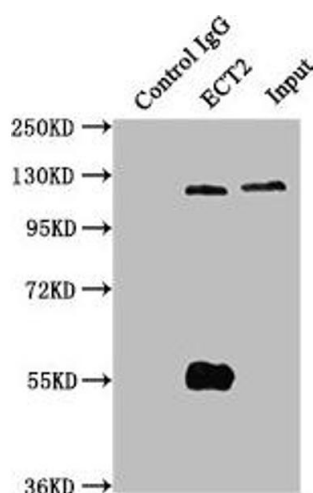
### Western Blotting

**Image 1.** Western Blot Positive WB detected in: HeLa whole cell lysate, A549 whole cell lysate, 293T whole cell lysate All lanes:ECT2 antibody at 2.7 µg/mL Secondary Goat polyclonal to rabbit IgG at 1/50000 dilution Predicted band size: 104, 100, 109, 101 kDa Observed band size: 104 kDa



### Immunohistochemistry

**Image 2.** IHC image of ABIN7165313 diluted at 1:100 and staining in paraffin-embedded human kidney tissue performed on a Leica Bond™ system. After dewaxing and hydration, antigen retrieval was mediated by high pressure in a citrate buffer (pH 6.0). Section was blocked with 10 % normal goat serum 30 min at RT. Then primary antibody (1 % BSA) was incubated at 4 °C overnight. The primary is detected by a biotinylated secondary antibody and visualized using an HRP conjugated SP system.



### Western Blotting

**Image 3.** Immunoprecipitating ECT2 in HeLa whole cell lysate Lane 1: Rabbit control IgG instead of ABIN7165313 in HeLa whole cell lysate. For western blotting, a HRP-conjugated Protein G antibody was used as the secondary antibody (1/50000) Lane 2: ABIN7165313 (6 µg) + HeLa whole cell lysate (1 mg) Lane 3: HeLa whole cell lysate (20 µg)