

Datasheet for ABIN7165321
anti-LMAN1 antibody (AA 154-329)

3 Images

[Go to Product page](#)

Overview

Quantity:	100 µg
Target:	LMAN1
Binding Specificity:	AA 154-329
Reactivity:	Human
Host:	Rabbit
Clonality:	Polyclonal
Conjugate:	This LMAN1 antibody is un-conjugated
Application:	Western Blotting (WB), ELISA, Immunohistochemistry (IHC), Immunofluorescence (IF)

Product Details

Immunogen:	Recombinant Human Protein ERGIC-53 protein (154-329AA)
Isotype:	IgG
Cross-Reactivity:	Human, Mouse
Purification:	>95%, Protein G purified

Target Details

Target:	LMAN1
Alternative Name:	LMAN1 (LMAN1 Products)
Background:	Background: Mannose-specific lectin. May recognize sugar residues of glycoproteins, glycolipids, or glycosylphosphatidyl inositol anchors and may be involved in the sorting or

Target Details

recycling of proteins, lipids, or both. The LMAN1-MCFD2 complex forms a specific cargo receptor for the ER-to-Golgi transport of selected proteins.

Aliases: Endoplasmic reticulum golgi intermediate compartment protein 53 antibody, ER-Golgi intermediate compartment 53 kDa protein antibody, ERGIC-53 antibody, ERGIC53 antibody, ERGIC53 like protein antibody, F5F8D antibody, FMFD1 antibody, Gp58 antibody, Intracellular mannose specific lectin antibody, Intracellular mannose-specific lectin MR60 antibody, Lectin mannose binding 1 antibody, Lectin mannose-binding 1 antibody, Lman1 antibody, LMAN1 like protein antibody, LMAN1_HUMAN antibody, MCFD1 antibody, MR60 antibody, Protein ERGIC-53 antibody

UniProt: [P49257](#)

Application Details

Application Notes: Recommended dilution: WB:1:500-1:5000, IHC:1:200-1:500, IF:1:50-1:200,

Restrictions: For Research Use only

Handling

Format: Liquid

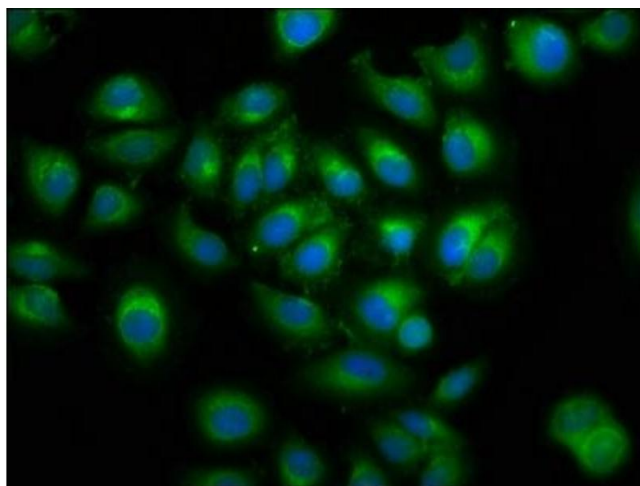
Buffer: Preservative: 0.03 % Proclin 300
Constituents: 50 % Glycerol, 0.01M PBS, pH 7.4

Preservative: ProClin

Precaution of Use: This product contains ProClin: a POISONOUS AND HAZARDOUS SUBSTANCE which should be handled by trained staff only.

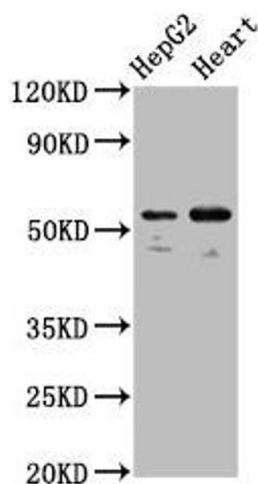
Storage: -20 °C, -80 °C

Storage Comment: Upon receipt, store at -20°C or -80°C. Avoid repeated freeze.



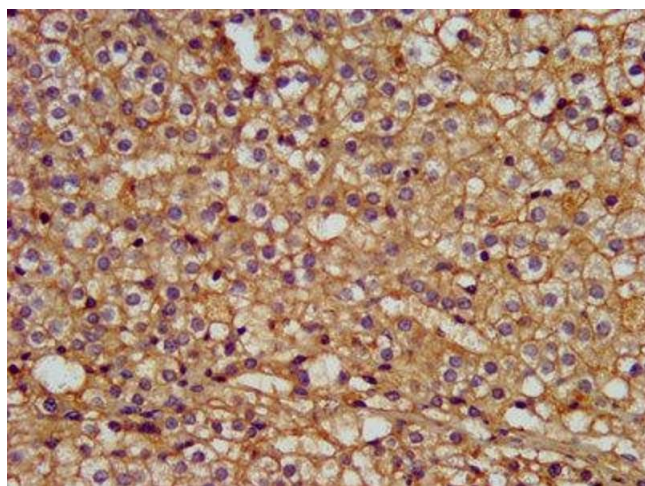
Immunofluorescence

Image 1. Immunofluorescence staining of A549 cells with ABIN7165321 at 1:100, counter-stained with DAPI. The cells were fixed in 4% formaldehyde, permeabilized using 0.2% Triton X-100 and blocked in 10% normal Goat Serum. The cells were then incubated with the antibody overnight at 4°C. The secondary antibody was Alexa Fluor 488-conjugated AffiniPure Goat Anti-Rabbit IgG(H+L).



Western Blotting

Image 2. Western Blot Positive WB detected in: HepG2 whole cell lysate, Mouse heart tissue. All lanes: LMAN1 antibody at 5.3 µg/mL. Secondary Goat polyclonal to rabbit IgG at 1/50000 dilution. Predicted band size: 58 kDa. Observed band size: 58 kDa.



Immunohistochemistry

Image 3. IHC image of ABIN7165321 diluted at 1:300 and staining in paraffin-embedded human adrenal gland tissue performed on a Leica Bond™ system. After dewaxing and hydration, antigen retrieval was mediated by high pressure in a citrate buffer (pH 6.0). Section was blocked with 10% normal goat serum 30min at RT. Then primary antibody (1% BSA) was incubated at 4°C overnight. The primary is detected by a biotinylated secondary antibody and visualized using an HRP conjugated SP system.