



[Go to Product page](#)

Datasheet for ABIN7165325  
**anti-LMAN1L antibody (AA 26-462)**

2 Images

### Overview

Quantity:	100 µg
Target:	LMAN1L
Binding Specificity:	AA 26-462
Reactivity:	Human
Host:	Rabbit
Clonality:	Polyclonal
Conjugate:	This LMAN1L antibody is un-conjugated
Application:	ELISA, Immunohistochemistry (IHC)

### Product Details

Immunogen:	Recombinant Human Protein ERGIC-53-like protein (26-462AA)
Isotype:	IgG
Cross-Reactivity:	Human
Purification:	>95%, Protein G purified

### Target Details

Target:	LMAN1L
Alternative Name:	LMAN1L ( <a href="#">LMAN1L Products</a> )
Background:	LMAN1L antibody, ERGL antibody, UNQ2784/PRO7174Protein ERGIC-53-like antibody, ERGIC53-like protein antibody, Lectin mannose-binding 1-like antibody, LMAN1-like protein

## Target Details

---

antibody

UniProt: [Q9HAT1](#)

## Application Details

---

Application Notes: Recommended dilution: IHC:1:20-1:200,

Restrictions: For Research Use only

## Handling

---

Format: Liquid

Buffer: Preservative: 0.03 % Proclin 300  
Constituents: 50 % Glycerol, 0.01M PBS, PH 7.4

Preservative: ProClin

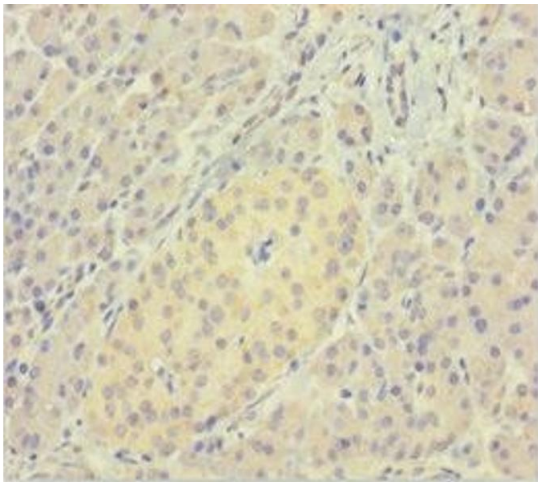
Precaution of Use: This product contains ProClin: a POISONOUS AND HAZARDOUS SUBSTANCE which should be handled by trained staff only.

Storage: -20 °C,-80 °C

Storage Comment: Upon receipt, store at -20°C or -80°C. Avoid repeated freeze.

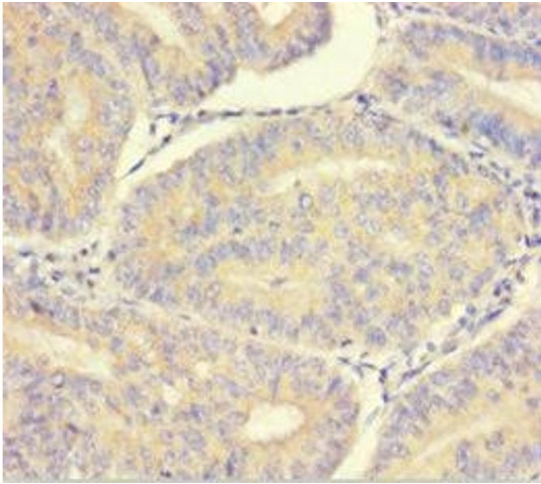
## Images

---



### Immunohistochemistry

**Image 1.** Immunohistochemistry of paraffin-embedded human pancreatic tissue using ABIN7165325 at dilution of 1:100



### Immunohistochemistry

**Image 2.** Immunohistochemistry of paraffin-embedded human endometrial cancer using ABIN7165325 at dilution of 1:100