



[Go to Product page](#)

Datasheet for ABIN7165330  
**anti-EVA1C antibody (AA 49-322)**

2 Images

Overview

Quantity:	100 µg
Target:	EVA1C
Binding Specificity:	AA 49-322
Reactivity:	Human
Host:	Rabbit
Clonality:	Polyclonal
Conjugate:	This EVA1C antibody is un-conjugated
Application:	ELISA, Western Blotting (WB), Immunohistochemistry (IHC)

Product Details

Immunogen:	Recombinant Human Protein eva-1 homolog C protein (49-322AA)
Isotype:	IgG
Cross-Reactivity:	Human
Purification:	>95%, Protein G purified

Target Details

Target:	EVA1C
Alternative Name:	EVA1C ( <a href="#">EVA1C Products</a> )
Background:	Background: Binds heparin. Aliases: EVA1C antibody, C21orf63 antibody, C21orf64 antibody, FAM176C antibody, PRED34

## Target Details

antibody, UNQ2504/PRO5993Protein eva-1 homolog C antibody, Protein FAM176C antibody, SUE21 antibody

UniProt: [P58658](#)

## Application Details

Application Notes: Recommended dilution: WB:1:500-1:2000, IHC:1:20-1:200,

Restrictions: For Research Use only

## Handling

Format: Liquid

Buffer: Preservative: 0.03 % Proclin 300  
Constituents: 50 % Glycerol, 0.01M PBS, PH 7.4

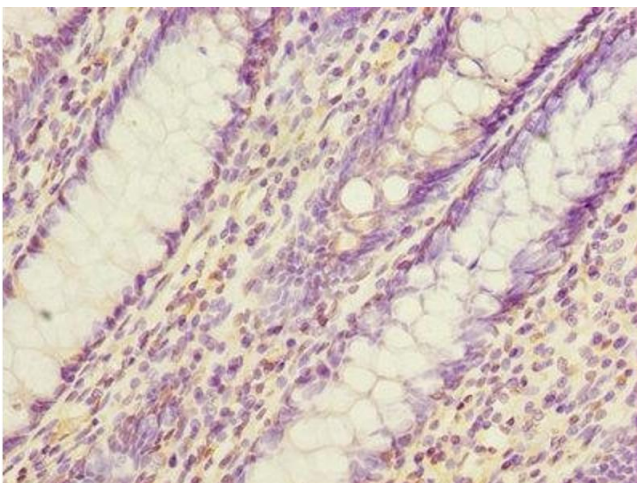
Preservative: ProClin

Precaution of Use: This product contains ProClin: a POISONOUS AND HAZARDOUS SUBSTANCE which should be handled by trained staff only.

Storage: -20 °C,-80 °C

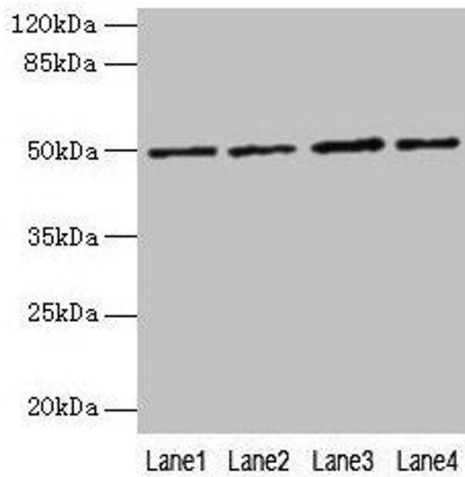
Storage Comment: Upon receipt, store at -20°C or -80°C. Avoid repeated freeze.

## Images



### Immunohistochemistry

**Image 1.** Immunohistochemistry of paraffin-embedded human colon cancer using ABIN7165330 at dilution of 1:100



### Western Blotting

**Image 2.** Western blot All lanes: EVA1C antibody at 5  $\mu$ g/mL  
Lane 1: Hela whole cell lysate Lane 2: Jurkat whole cell lysate Lane 3: 293T whole cell lysate Lane 4: HL60 whole cell lysate Secondary Goat polyclonal to rabbit IgG at 1/10000 dilution Predicted band size: 50, 8 kDa Observed band size: 50 kDa