

Datasheet for ABIN7165402  
**anti-FAM136A antibody (AA 2-138)**



[Go to Product page](#)

3 Images

### Overview

Quantity:	100 µg
Target:	FAM136A
Binding Specificity:	AA 2-138
Reactivity:	Human
Host:	Rabbit
Clonality:	Polyclonal
Conjugate:	This FAM136A antibody is un-conjugated
Application:	ELISA, Western Blotting (WB), Immunohistochemistry (IHC)

### Product Details

Immunogen:	Recombinant Human Protein FAM136A protein (2-138AA)
Isotype:	IgG
Cross-Reactivity:	Human
Purification:	>95%, Protein G purified

### Target Details

Target:	FAM136A
Alternative Name:	FAM136A ( <a href="#">FAM136A Products</a> )
Background:	FAM136A Protein FAM136A antibody
UniProt:	<a href="#">Q96C01</a>

## Application Details

---

Application Notes: Recommended dilution: WB:1:500-1:2000, IHC:1:20-1:200,

---

Restrictions: For Research Use only

---

## Handling

---

Format: Liquid

---

Buffer: Preservative: 0.03 % Proclin 300  
Constituents: 50 % Glycerol, 0.01M PBS, PH 7.4

---

Preservative: ProClin

---

Precaution of Use: This product contains ProClin: a POISONOUS AND HAZARDOUS SUBSTANCE which should be handled by trained staff only.

---

Storage: -20 °C,-80 °C

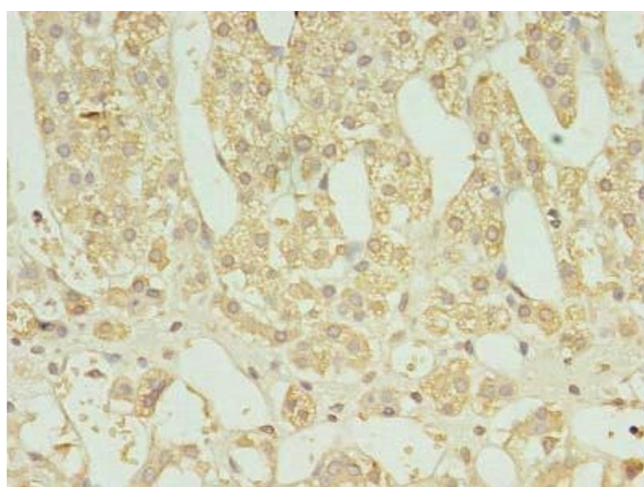
---

Storage Comment: Upon receipt, store at -20°C or -80°C. Avoid repeated freeze.

---

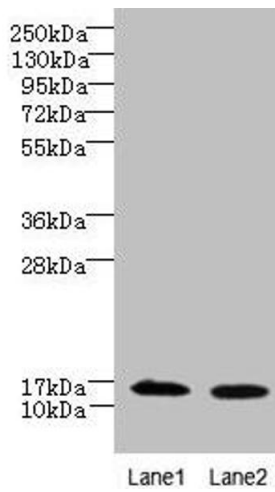
## Images

---



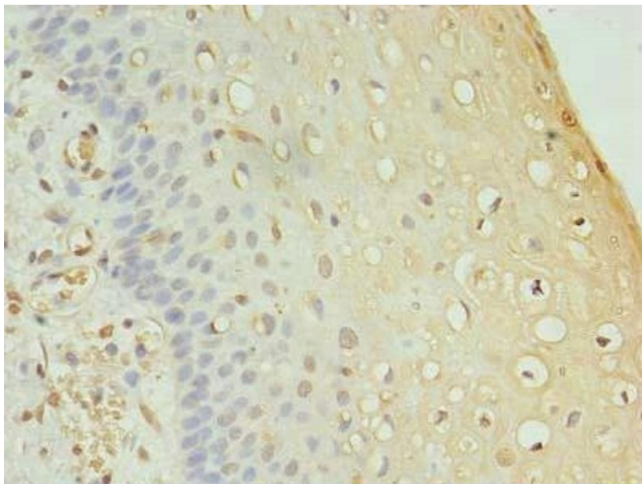
### Immunohistochemistry

**Image 1.** Immunohistochemistry of paraffin-embedded human adrenal gland tissue using ABIN7165402 at dilution of 1:100



### Western Blotting

**Image 2.** Western blot All lanes: FAM136A antibody at 8  $\mu$ g/mL Lane 1: HeLa whole cell lysate Lane 2: Caco-2 whole cell lysate Secondary Goat polyclonal to rabbit IgG at 1/10000 dilution Predicted band size: 16 kDa Observed band size: 16 kDa



### Immunohistochemistry

**Image 3.** Immunohistochemistry of paraffin-embedded human cervical cancer using ABIN7165402 at dilution of 1:100