



[Go to Product page](#)

Datasheet for ABIN7165422
anti-FAM156A antibody (AA 1-153)

3 Images

Overview

Quantity:	100 µg
Target:	FAM156A
Binding Specificity:	AA 1-153
Reactivity:	Human
Host:	Rabbit
Clonality:	Polyclonal
Conjugate:	This FAM156A antibody is un-conjugated
Application:	ELISA, Immunohistochemistry (IHC), Western Blotting (WB), Immunofluorescence (IF)

Product Details

Immunogen:	Recombinant Human Protein FAM156A/FAM156B protein (1-153AA)
Isotype:	IgG
Cross-Reactivity:	Human, Mouse
Purification:	>95%, Protein G purified

Target Details

Target:	FAM156A
Alternative Name:	FAM156A (FAM156A Products)
Background:	Background: nuclear envelope Aliases: FAM156A antibody, TMEM29 antibody, PP12994 antibody, PRO0659, antibody,

Target Details

FAM156B antibody, TMEM29BProtein FAM156A/FAM156B antibody, Transmembrane protein 29/29B antibody

UniProt: [Q8NDB6](#)

Application Details

Application Notes: Recommended dilution: WB:1:500-1:2000, IHC:1:20-1:200, IF:1:50-1:200,

Restrictions: For Research Use only

Handling

Format: Liquid

Buffer: Preservative: 0.03 % Proclin 300
Constituents: 50 % Glycerol, 0.01M PBS, PH 7.4

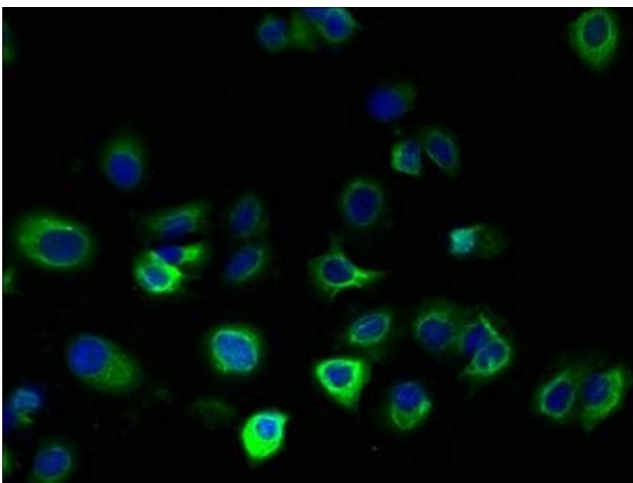
Preservative: ProClin

Precaution of Use: This product contains ProClin: a POISONOUS AND HAZARDOUS SUBSTANCE which should be handled by trained staff only.

Storage: -20 °C,-80 °C

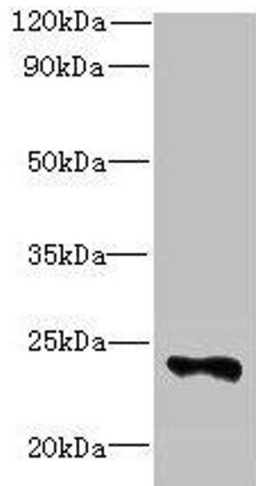
Storage Comment: Upon receipt, store at -20°C or -80°C. Avoid repeated freeze.

Images



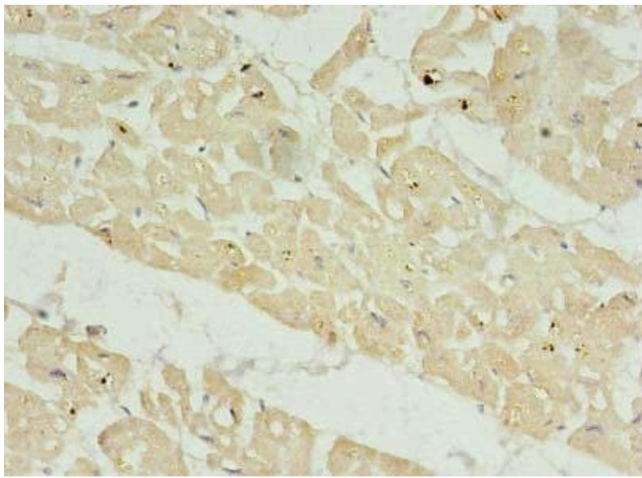
Immunofluorescence

Image 1. Immunofluorescent analysis of MCF-7 cells using ABIN7165422 at dilution of 1:100 and Alexa Fluor 488-conjugated AffiniPure Goat Anti-Rabbit IgG(H+L)



Western Blotting

Image 2. Western blot All lanes: FAM156A antibody at 5 μ g/mL + Mouse heart tissue Secondary Goat polyclonal to rabbit IgG at 1/10000 dilution Predicted band size: 25 kDa Observed band size: 25 kDa



Immunohistochemistry

Image 3. Immunohistochemistry of paraffin-embedded human heart tissue using ABIN7165422 at dilution of 1:100