



[Go to Product page](#)

Datasheet for ABIN7165438  
**anti-FAM166A antibody (AA 1-317)**

1 Image

### Overview

Quantity:	100 µg
Target:	FAM166A
Binding Specificity:	AA 1-317
Reactivity:	Human
Host:	Rabbit
Clonality:	Polyclonal
Conjugate:	This FAM166A antibody is un-conjugated
Application:	ELISA, Immunohistochemistry (IHC)

### Product Details

Immunogen:	Recombinant Human Protein FAM166A protein (1-317AA)
Isotype:	IgG
Cross-Reactivity:	Human
Purification:	>95%, Protein G purified

### Target Details

Target:	FAM166A
Alternative Name:	FAM166A ( <a href="#">FAM166A Products</a> )
Background:	FAM166A antibody, HSD46Protein FAM166A antibody
UniProt:	<a href="#">Q6J272</a>

## Application Details

---

Application Notes: Recommended dilution: IHC:1:20-1:200,

Restrictions: For Research Use only

## Handling

---

Format: Liquid

Buffer: Preservative: 0.03 % Proclin 300  
Constituents: 50 % Glycerol, 0.01M PBS, PH 7.4

Preservative: ProClin

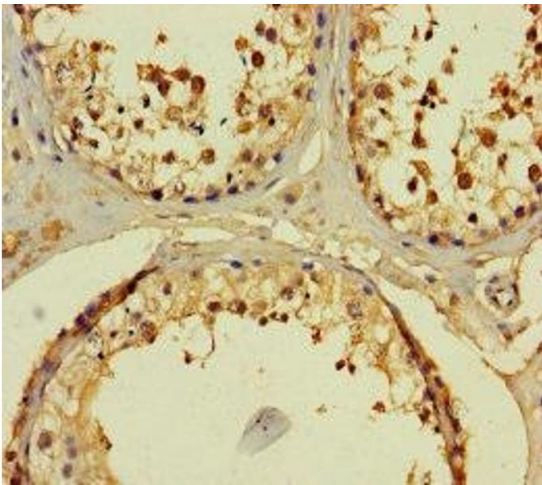
Precaution of Use: This product contains ProClin: a POISONOUS AND HAZARDOUS SUBSTANCE which should be handled by trained staff only.

Storage: -20 °C,-80 °C

Storage Comment: Upon receipt, store at -20°C or -80°C. Avoid repeated freeze.

## Images

---



### Immunohistochemistry

**Image 1.** Immunohistochemistry of paraffin-embedded human testis tissue using ABIN7165438 at dilution of 1:100