



[Go to Product page](#)

Datasheet for ABIN7165470
anti-FAM222B antibody (AA 351-562)

3 Images

Overview

Quantity:	100 µg
Target:	FAM222B
Binding Specificity:	AA 351-562
Reactivity:	Human
Host:	Rabbit
Clonality:	Polyclonal
Conjugate:	This FAM222B antibody is un-conjugated
Application:	ELISA, Western Blotting (WB), Immunohistochemistry (IHC)

Product Details

Immunogen:	Recombinant Human Protein FAM222B protein (351-562AA)
Isotype:	IgG
Cross-Reactivity:	Human, Mouse
Purification:	>95%, Protein G purified

Target Details

Target:	FAM222B
Alternative Name:	FAM222B (FAM222B Products)
Background:	Background: nucleoplasm Aliases: FAM222B antibody, C17orf63Protein FAM222B antibody

Target Details

UniProt: [Q8WU58](#)

Application Details

Application Notes: Recommended dilution: WB:1:1000-1:5000, IHC:1:20-1:200,

Restrictions: For Research Use only

Handling

Format: Liquid

Buffer: Preservative: 0.03 % Proclin 300
Constituents: 50 % Glycerol, 0.01M PBS, PH 7.4

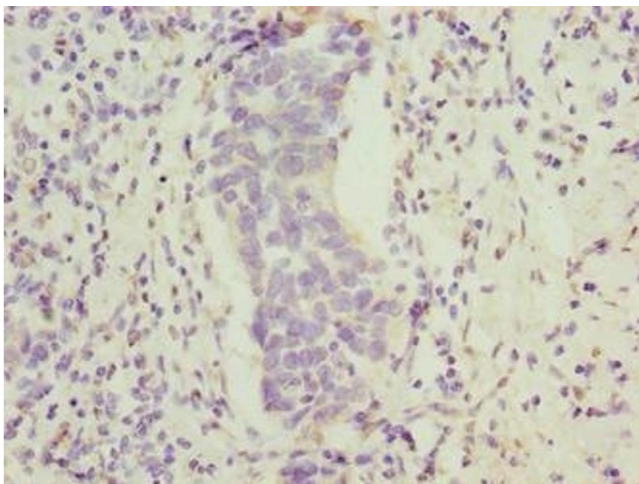
Preservative: ProClin

Precaution of Use: This product contains ProClin: a POISONOUS AND HAZARDOUS SUBSTANCE which should be handled by trained staff only.

Storage: -20 °C,-80 °C

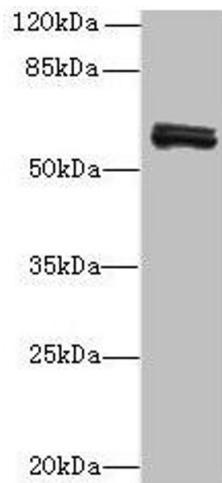
Storage Comment: Upon receipt, store at -20°C or -80°C. Avoid repeated freeze.

Images



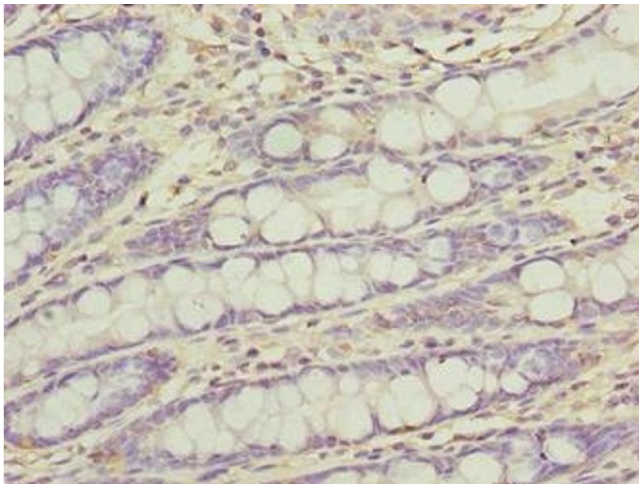
Immunohistochemistry

Image 1. Immunohistochemistry of paraffin-embedded human bladder cancer using ABIN7165470 at dilution of 1:100



Western Blotting

Image 2. Western blot All lanes: FAM222B antibody at 2 μ g/mL + Mouse liver tissue Secondary Goat polyclonal to rabbit at 1/10000 dilution Predicted band size: 60 kDa Observed band size: 60 kDa



Immunohistochemistry

Image 3. Immunohistochemistry of paraffin-embedded human colon tissue using ABIN7165470 at dilution of 1:100