



Datasheet for ABIN7165550  
**anti-FAM71F1 antibody (AA 121-343)**



[Go to Product page](#)

1 Image

Overview

|                      |  |
|----------------------|--|
| Quantity:            | 100 µg                                 |
| Target:              | FAM71F1                                |
| Binding Specificity: | AA 121-343                             |
| Reactivity:          | Human                                  |
| Host:                | Rabbit                                 |
| Clonality:           | Polyclonal                             |
| Conjugate:           | This FAM71F1 antibody is un-conjugated |
| Application:         | ELISA, Immunohistochemistry (IHC)      |

Product Details

|                   |   |
|-------------------|---|
| Immunogen:        | Recombinant Human Protein FAM71F1 protein (121-343AA) |
| Isotype:          | IgG   |
| Cross-Reactivity: | Human   |
| Purification:     | >95%, Protein G purified                              |

Target Details

|                   |  |
|-------------------|--|
| Target:           | FAM71F1  |
| Alternative Name: | FAM71F1 ( <a href="#">FAM71F1 Products</a> )   |
| Background:       | Background: nucleus<br>Aliases: FAM71F1 antibody, FAM137AProtein FAM71F1 antibody, Protein FAM137A antibody, |

## Target Details

Testis development protein NYD-SP18 antibody

UniProt: [Q96KD3](#)

## Application Details

Application Notes: Recommended dilution: IHC:1:20-1:200,

Restrictions: For Research Use only

## Handling

Format: Liquid

Buffer: Preservative: 0.03 % Proclin 300  
Constituents: 50 % Glycerol, 0.01M PBS, PH 7.4

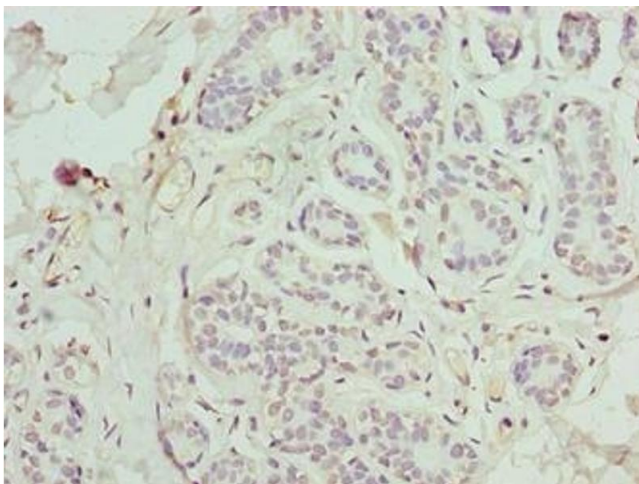
Preservative: ProClin

Precaution of Use: This product contains ProClin: a POISONOUS AND HAZARDOUS SUBSTANCE which should be handled by trained staff only.

Storage: -20 °C,-80 °C

Storage Comment: Upon receipt, store at -20°C or -80°C. Avoid repeated freeze.

## Images



### Immunohistochemistry

**Image 1.** Immunohistochemistry of paraffin-embedded human breast cancer using ABIN7165550 at dilution of 1:100