

Datasheet for ABIN7165598
anti-FLII antibody (AA 577-729)[Go to Product page](#)

2 Images

Overview

Quantity:	100 µg
Target:	FLII
Binding Specificity:	AA 577-729
Reactivity:	Human
Host:	Rabbit
Clonality:	Polyclonal
Conjugate:	This FLII antibody is un-conjugated
Application:	ELISA, Immunohistochemistry (IHC), Immunofluorescence (IF)

Product Details

Immunogen:	Recombinant Human Protein flightless-1 homolog protein (577-729AA)
Isotype:	IgG
Cross-Reactivity:	Human
Purification:	>95%, Protein G purified

Target Details

Target:	FLII
Alternative Name:	FLII (FLII Products)
Background:	Background: May play a role as coactivator in transcriptional activation by hormone-activated nuclear receptors (NR) and acts in cooperation with NCOA2 and CARM1. Involved in estrogen

Target Details

hormone signaling. Involved in early embryonic development (By similarity). May play a role in regulation of cytoskeletal rearrangements involved in cytokinesis and cell migration, by inhibiting Rac1-dependent paxillin phosphorylation.

Aliases: Fli 1 antibody, FLI antibody, Fli1 antibody, Flightless 1 antibody, Flightless I (Drosophila) homolog antibody, Flightless I homolog antibody, Flightless I homolog (Drosophila) antibody, Flightless1 antibody, FlightlessI antibody, flil antibody, FLII_HUMAN antibody, Fliih antibody, FLIL antibody, MGC39265 antibody, Protein flightless 1 homolog antibody, Protein flightless-1 homolog antibody

UniProt: [Q13045](#)

Application Details

Application Notes: Recommended dilution: IHC:1:500-1:1000, IF:1:50-1:200,

Restrictions: For Research Use only

Handling

Format: Liquid

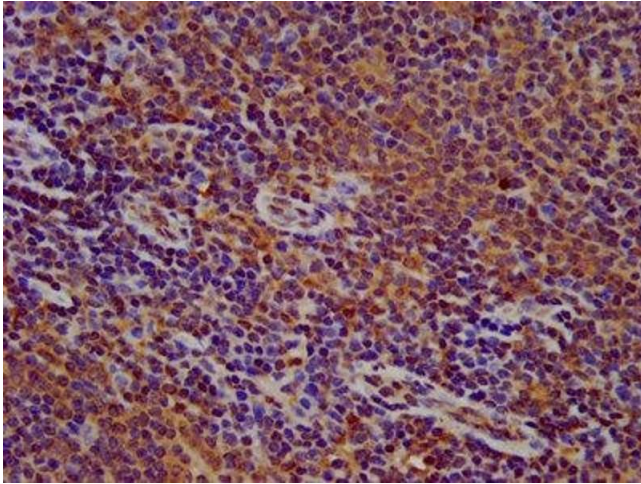
Buffer: Preservative: 0.03 % Proclin 300
Constituents: 50 % Glycerol, 0.01M PBS, pH 7.4

Preservative: ProClin

Precaution of Use: This product contains ProClin: a POISONOUS AND HAZARDOUS SUBSTANCE which should be handled by trained staff only.

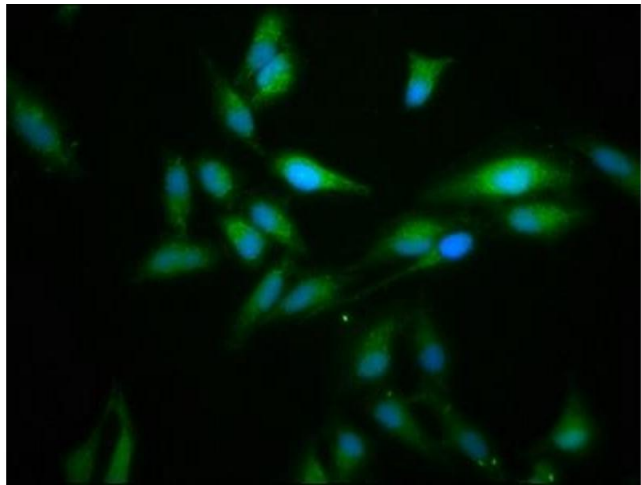
Storage: -20 °C,-80 °C

Storage Comment: Upon receipt, store at -20°C or -80°C. Avoid repeated freeze.



Immunohistochemistry

Image 1. IHC image of ABIN7165598 diluted at 1:500 and staining in paraffin-embedded human lymph node tissue performed on a Leica Bond™ system. After dewaxing and hydration, antigen retrieval was mediated by high pressure in a citrate buffer (pH 6.0). Section was blocked with 10% normal goat serum 30min at RT. Then primary antibody (1% BSA) was incubated at 4°C overnight. The primary is detected by a biotinylated secondary antibody and visualized using an HRP conjugated SP system.



Immunofluorescence

Image 2. Immunofluorescence staining of HeLa cells with ABIN7165598 at 1:166, counter-stained with DAPI. The cells were fixed in 4% formaldehyde, permeabilized using 0.2% Triton X-100 and blocked in 10% normal Goat Serum. The cells were then incubated with the antibody overnight at 4°C. The secondary antibody was Alexa Fluor 488-conjugated AffiniPure Goat Anti-Rabbit IgG(H+L).