

Datasheet for ABIN7165606  
**anti-FRY-Like antibody (AA 42-739)**[Go to Product page](#)

## 2 Images

## Overview

Quantity:	100 µL
Target:	FRY-Like (FRYL)
Binding Specificity:	AA 42-739
Reactivity:	Human
Host:	Rabbit
Clonality:	Polyclonal
Conjugate:	This FRY-Like antibody is un-conjugated
Application:	ELISA, Immunohistochemistry (IHC), Immunofluorescence (IF)

## Product Details

Immunogen:	Recombinant Human Protein furry homolog-like protein (42-739AA)
Isotype:	IgG
Cross-Reactivity:	Human
Purification:	>95%, Protein G purified

## Target Details

Target:	FRY-Like (FRYL)
Alternative Name:	FRYL ( <a href="#">FRYL Products</a> )
Background:	Background: Plays a key role in maintaining the integrity of polarized cell extensions during morphogenesis, regulates the actin cytoskeleton and plays a key role in patterning sensory

## Target Details

neuron dendritic fields by promoting avoidance between homologous dendrites as well as by limiting dendritic branching (By similarity). May function as a transcriptional activator.

Aliases: 2010313D22Rik antibody, 2310004H21Rik antibody, 2510002A14Rik antibody, 9030227G01Rik antibody, AF4P12 antibody, AI930088 antibody, ALL fused gene from chromosome 4p12 antibody, ALL1-fused gene from chromosome 4p12 protein antibody, DKFZp686E205 antibody, FLJ161772 antibody, FRY like antibody, FRYL antibody, FRYL\_HUMAN antibody, Furry homolog like (Drosophila) antibody, Furry homolog like antibody, Furry like antibody, KIAA0826 antibody, mKIAA0826 antibody, Protein furry homolog-like antibody

UniProt: [O94915](#)

## Application Details

Application Notes: Recommended dilution: IHC:1:500-1:1000, IF:1:50-1:200,

Restrictions: For Research Use only

## Handling

Format: Liquid

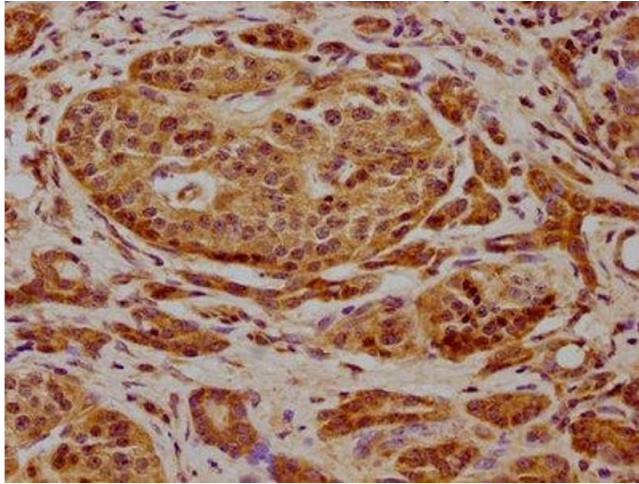
Buffer: Preservative: 0.03 % Proclin 300  
Constituents: 50 % Glycerol, 0.01M PBS, pH 7.4

Preservative: ProClin

Precaution of Use: This product contains ProClin: a POISONOUS AND HAZARDOUS SUBSTANCE which should be handled by trained staff only.

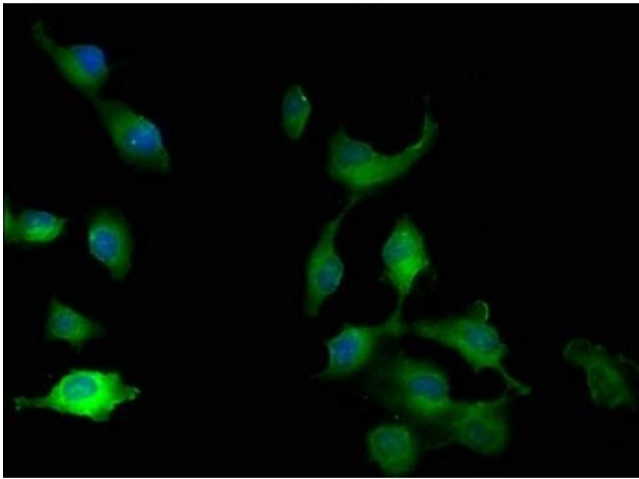
Storage: -20 °C,-80 °C

Storage Comment: Upon receipt, store at -20°C or -80°C. Avoid repeated freeze.



#### Immunohistochemistry

**Image 1.** IHC image of ABIN7165606 diluted at 1:600 and staining in paraffin-embedded human pancreatic cancer performed on a Leica Bond™ system. After dewaxing and hydration, antigen retrieval was mediated by high pressure in a citrate buffer (pH 6.0). Section was blocked with 10 % normal goat serum 30 min at RT. Then primary antibody (1 % BSA) was incubated at 4 °C overnight. The primary is detected by a biotinylated secondary antibody and visualized using an HRP conjugated SP system.



#### Immunofluorescence

**Image 2.** Immunofluorescence staining of U251 cells with ABIN7165606 at 1:100, counter-stained with DAPI. The cells were fixed in 4 % formaldehyde, permeabilized using 0.2 % Triton X-100 and blocked in 10 % normal Goat Serum. The cells were then incubated with the antibody overnight at 4 °C. The secondary antibody was Alexa Fluor 488-conjugated AffiniPure Goat Anti-Rabbit IgG(H+L).