



[Go to Product page](#)

Datasheet for ABIN7165661
anti-IWS1 antibody (AA 570-819)

3 Images

Overview

Quantity:	100 µL
Target:	IWS1
Binding Specificity:	AA 570-819
Reactivity:	Human
Host:	Rabbit
Clonality:	Polyclonal
Conjugate:	This IWS1 antibody is un-conjugated
Application:	Western Blotting (WB), ELISA, Immunohistochemistry (IHC)

Product Details

Immunogen:	Recombinant Human Protein IWS1 homolog protein (570-819AA)
Isotype:	IgG
Cross-Reactivity:	Human
Purification:	Antigen Affinity Purified

Target Details

Target:	IWS1
Alternative Name:	IWS1 (IWS1 Products)
Background:	Background: Transcription factor which plays a key role in defining the composition of the RNA polymerase II (RNAPII) elongation complex and in modulating the production of mature mRNA

Target Details

transcripts. Acts as an assembly factor to recruit various factors to the RNAPII elongation complex and is recruited to the complex via binding to the transcription elongation factor SUPT6H bound to the C-terminal domain (CTD) of the RNAPII subunit RPB1 (POLR2A). The SUPT6H:IWS1:CTD complex recruits mRNA export factors (ALYREF/THOC4, EXOSC10) as well as histone modifying enzymes (such as SETD2) to ensure proper mRNA splicing, efficient mRNA export and elongation-coupled H3K36 methylation, a signature chromatin mark of active transcription.

Aliases: DKFZp761G0123 antibody, FLJ10006 antibody, FLJ14655 antibody, FLJ32319 antibody, Interacts with Spt6 antibody, iws1 antibody, IWS1 homolog antibody, IWS1-like protein antibody, IWS1_HUMAN antibody, IWS1L antibody, MGC126375 antibody, MGC126376 antibody, OTTHUMP00000162262 antibody, Protein IWS1 homolog antibody

UniProt: [Q96ST2](#)

Application Details

Application Notes: Recommended dilution: WB:1:1000-1:5000, IHC:1:20-1:200,

Restrictions: For Research Use only

Handling

Format: Liquid

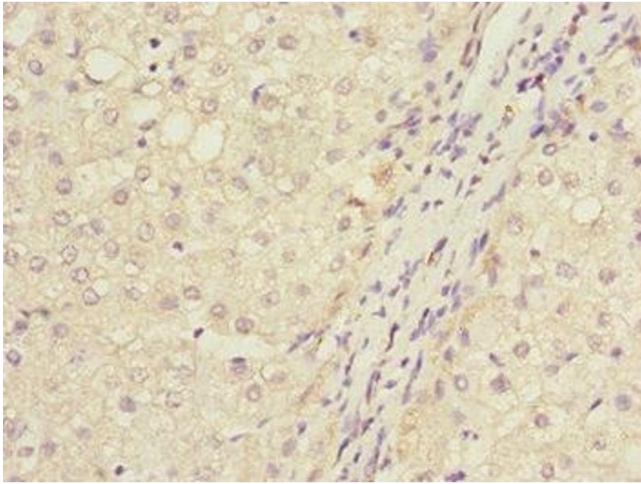
Buffer: PBS with 0.02 % sodium azide, 50 % glycerol, pH 7.3.

Preservative: Sodium azide

Precaution of Use: This product contains Sodium azide: a POISONOUS AND HAZARDOUS SUBSTANCE which should be handled by trained staff only.

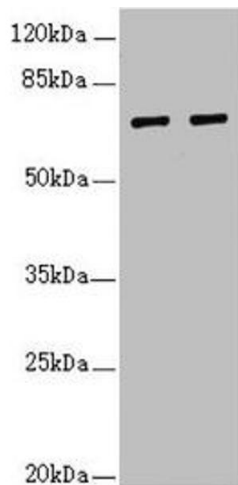
Storage: -20 °C,-80 °C

Storage Comment: Upon receipt, store at -20°C or -80°C. Avoid repeated freeze.



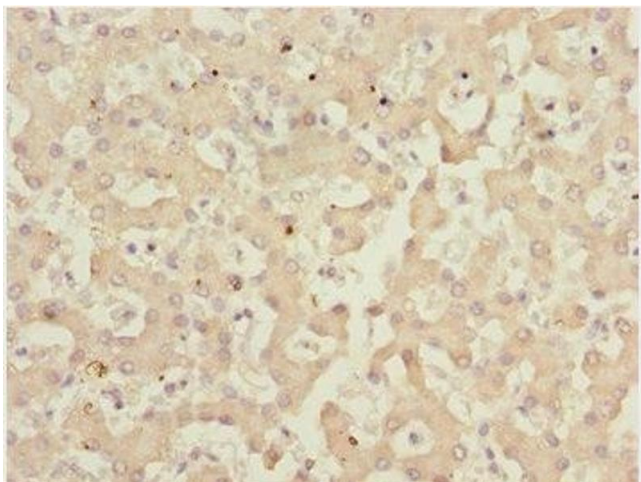
Immunohistochemistry

Image 1. Immunohistochemistry of paraffin-embedded human liver cancer using ABIN7165661 at dilution of 1:100



Western Blotting

Image 2. Western blot All lanes: IWS1 antibody at 3.84 μ g/mL Lane 1: 293T whole cell lysate Lane 2: Jurkat whole cell lysate Secondary Goat polyclonal to rabbit IgG at 1/10000 dilution Predicted band size: 92, 57, 70 kDa Observed band size: 70 kDa



Immunohistochemistry

Image 3. Immunohistochemistry of paraffin-embedded human liver tissue using ABIN7165661 at dilution of 1:100