



[Go to Product page](#)

Datasheet for ABIN7165664  
**anti-JAG1 antibody (AA 809-1046)**

3 Images

### Overview

Quantity:	100 µg
Target:	JAG1
Binding Specificity:	AA 809-1046
Reactivity:	Human
Host:	Rabbit
Clonality:	Polyclonal
Conjugate:	This JAG1 antibody is un-conjugated
Application:	ELISA, Immunohistochemistry (IHC), Immunofluorescence (IF)

### Product Details

Immunogen:	Recombinant Human Protein jagged-1 protein (809-1046AA)
Isotype:	IgG
Cross-Reactivity:	Human
Purification:	>95%, Protein G purified

### Target Details

Target:	JAG1
Alternative Name:	JAG1 ( <a href="#">JAG1 Products</a> )
Background:	Background: Ligand for multiple Notch receptors and involved in the mediation of Notch signaling. May be involved in cell-fate decisions during hematopoiesis. Seems to be involved in

## Target Details

---

early and late stages of mammalian cardiovascular development. Inhibits myoblast differentiation (By similarity). Enhances fibroblast growth factor-induced angiogenesis (in vitro).  
Aliases: AGS antibody, AHD antibody, AWS antibody, CD 339 antibody, CD339 antibody, CD339 antigen antibody, Headturner antibody, hJ1 antibody, Htu antibody, Jag 1 antibody, Jag1 antibody, JAG1\_HUMAN antibody, Jagged 1 antibody, Jagged1 (Alagille syndrome) antibody, Jagged1 antibody, JAGL1 antibody, MGC104644 antibody, OTTHUMP00000030278 antibody, Protein jagged-1 antibody, Ser 1 antibody, Ser1 antibody, Serrate 1 antibody, Slalom antibody

---

UniProt: [P78504](#)

---

Pathways: [Notch Signaling](#), [Stem Cell Maintenance](#)

## Application Details

---

Application Notes: Recommended dilution: IHC:1:20-1:200, IF:1:50-1:200,

---

Restrictions: For Research Use only

## Handling

---

Format: Liquid

---

Buffer: Preservative: 0.03 % Proclin 300  
Constituents: 50 % Glycerol, 0.01M PBS, pH 7.4

---

Preservative: ProClin

---

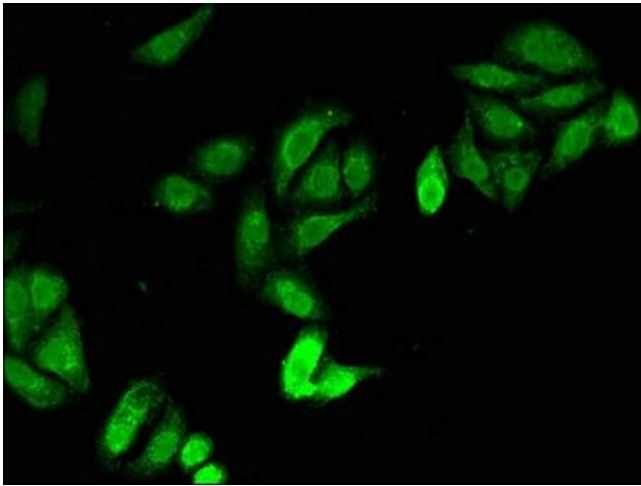
Precaution of Use: This product contains ProClin: a POISONOUS AND HAZARDOUS SUBSTANCE which should be handled by trained staff only.

---

Storage: -20 °C,-80 °C

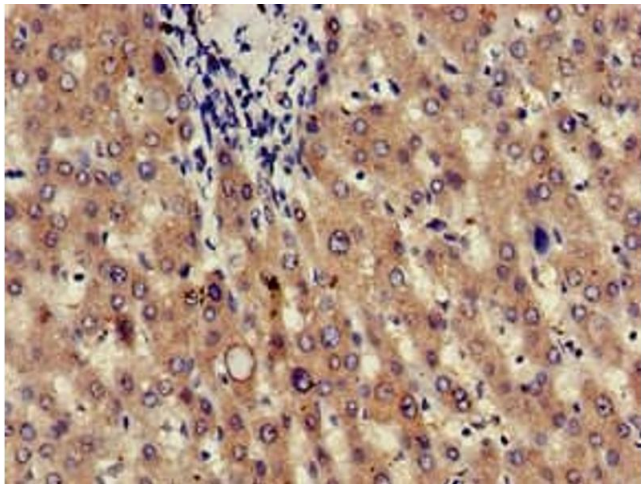
---

Storage Comment: Upon receipt, store at -20°C or -80°C. Avoid repeated freeze.



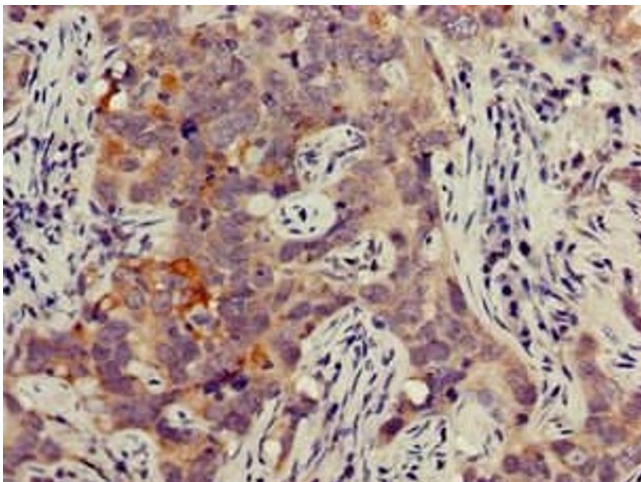
#### Immunofluorescence

**Image 1.** Immunofluorescent analysis of HepG2 cells using ABIN7165664 at dilution of 1:100 and Alexa Fluor 488-conjugated AffiniPure Goat Anti-Rabbit IgG(H+L)



#### Immunohistochemistry

**Image 2.** Immunohistochemistry of paraffin-embedded human liver tissue using ABIN7165664 at dilution of 1:100



#### Immunohistochemistry

**Image 3.** Immunohistochemistry of paraffin-embedded human pancreatic cancer using ABIN7165664 at dilution of 1:100