

Datasheet for ABIN7165707
anti-PKC eta antibody (AA 1-678)



[Go to Product page](#)

3 Images

Overview

Quantity:	100 µg
Target:	PKC eta (PRKCH)
Binding Specificity:	AA 1-678
Reactivity:	Human
Host:	Rabbit
Clonality:	Polyclonal
Conjugate:	This PKC eta antibody is un-conjugated
Application:	Western Blotting (WB), ELISA, Immunohistochemistry (IHC)

Product Details

Immunogen:	Recombinant Human Protein kinase C eta type protein (1-678AA)
Isotype:	IgG
Cross-Reactivity:	Human, Mouse, Rat
Purification:	>95%, Protein G purified

Target Details

Target:	PKC eta (PRKCH)
Alternative Name:	PRKCH (PRKCH Products)
Background:	Background: Calcium-independent, phospholipid- and diacylglycerol (DAG)-dependent serine/threonine-protein kinase that is involved in the regulation of cell differentiation in

Target Details

keratinocytes and pre-B cell receptor, mediates regulation of epithelial tight junction integrity and foam cell formation, and is required for glioblastoma proliferation and apoptosis prevention in MCF-7 cells. In keratinocytes, binds and activates the tyrosine kinase FYN, which in turn blocks epidermal growth factor receptor (EGFR) signaling and leads to keratinocyte growth arrest and differentiation. Associates with the cyclin CCNE1-CDK2-CDKN1B complex and inhibits CDK2 kinase activity, leading to RB1 dephosphorylation and thereby G1 arrest in keratinocytes. In association with RALA activates actin depolymerization, which is necessary for keratinocyte differentiation. In the pre-B cell receptor signaling, functions downstream of BLNK by up-regulating IRF4, which in turn activates L chain gene rearrangement. Regulates epithelial tight junctions (TJs) by phosphorylating occludin (OCLN) on threonine residues, which is necessary for the assembly and maintenance of TJs. In association with PLD2 and via TLR4 signaling, is involved in lipopolysaccharide (LPS)-induced RGS2 down-regulation and foam cell formation. Upon PMA stimulation, mediates glioblastoma cell proliferation by activating the mTOR pathway, the PI3K/AKT pathway and the ERK1-dependent phosphorylation of ELK1. Involved in the protection of glioblastoma cells from irradiation-induced apoptosis by preventing caspase-9 activation. In camptothecin-treated MCF-7 cells, regulates NF-kappa-B upstream signaling by activating IKBKB, and confers protection against DNA damage-induced apoptosis. Promotes oncogenic functions of ATF2 in the nucleus while blocking its apoptotic function at mitochondria. Phosphorylates ATF2 which promotes its nuclear retention and transcriptional activity and negatively regulates its mitochondrial localization.

Aliases: KPCL_HUMAN antibody, MGC 5363 antibody, MGC26269 antibody, MGC5363 antibody, nPKC eta antibody, nPKC-eta antibody, PKC h antibody, PKC L antibody, PKC-L antibody, PKCh antibody, PKCL antibody, Prkch antibody, PRKCL antibody, Protein kinase C eta antibody, Protein kinase C eta type antibody

UniProt:	P24723
Pathways:	Myometrial Relaxation and Contraction , Thromboxane A2 Receptor Signaling

Application Details

Application Notes:	Recommended dilution: WB:1:500-1:5000, IHC:1:500-1:1000,
Restrictions:	For Research Use only

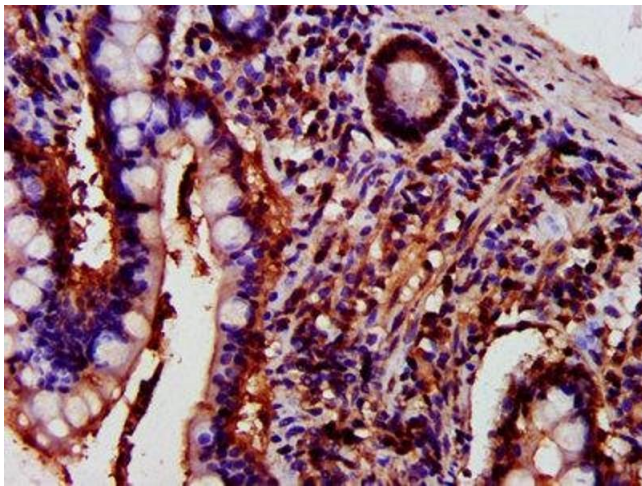
Handling

Format:	Liquid
---------	--------

Handling

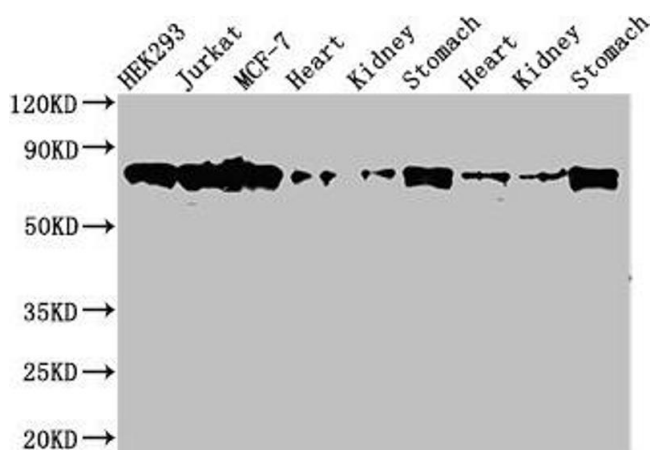
Buffer:	Preservative: 0.03 % Proclin 300
	Constituents: 50 % Glycerol, 0.01M PBS, PH 7.4
Preservative:	ProClin
Precaution of Use:	This product contains ProClin: a POISONOUS AND HAZARDOUS SUBSTANCE which should be handled by trained staff only.
Storage:	-20 °C,-80 °C
Storage Comment:	Upon receipt, store at -20°C or -80°C. Avoid repeated freeze.

Images



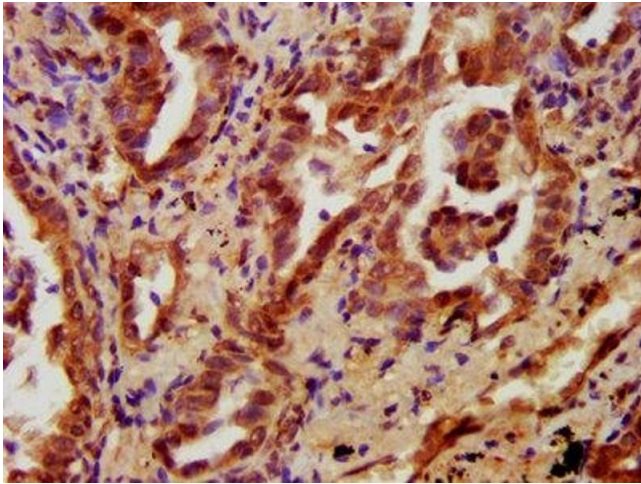
Immunohistochemistry

Image 1. IHC image of ABIN7165707 diluted at 1:700 and staining in paraffin-embedded human small intestine tissue performed on a Leica Bond™ system. After dewaxing and hydration, antigen retrieval was mediated by high pressure in a citrate buffer (pH 6.0). Section was blocked with 10% normal goat serum 30min at RT. Then primary antibody (1% BSA) was incubated at 4°C overnight. The primary is detected by a biotinylated secondary antibody and visualized using an HRP conjugated SP system.



Western Blotting

Image 2. Western Blot Positive WB detected in: HEK293 whole cell lysate, Jurkat whole cell lysate, MCF-7 whole cell lysate, Rat heart tissue, Rat kidney tissue, Rat stomach tissue, Mouse heart tissue, Mouse kidney tissue, Mouse stomach tissue. All lanes: PRKCH antibody at 3.5 µg/mL. Secondary Goat polyclonal to rabbit IgG at 1/50000 dilution. Predicted band size: 78, 60 kDa. Observed band size: 78 kDa.



Immunohistochemistry

Image 3. IHC image of ABIN7165707 diluted at 1:700 and staining in paraffin-embedded human lung cancer performed on a Leica Bond™ system. After dewaxing and hydration, antigen retrieval was mediated by high pressure in a citrate buffer (pH 6.0). Section was blocked with 10% normal goat serum 30min at RT. Then primary antibody (1% BSA) was incubated at 4°C overnight. The primary is detected by a biotinylated secondary antibody and visualized using an HRP conjugated SP system.