



[Go to Product page](#)

Datasheet for ABIN7165725  
**anti-KTI12 antibody (AA 110-204)**

3 Images

Overview

Quantity:	100 µg
Target:	KTI12
Binding Specificity:	AA 110-204
Reactivity:	Human
Host:	Rabbit
Clonality:	Polyclonal
Conjugate:	This KTI12 antibody is un-conjugated
Application:	Western Blotting (WB), ELISA, Immunohistochemistry (IHC), Immunofluorescence (IF)

Product Details

Immunogen:	Recombinant Human Protein KTI12 homolog protein (110-204AA)
Isotype:	IgG
Cross-Reactivity:	Human, Rat
Purification:	>95%, Protein G purified

Target Details

Target:	KTI12
Alternative Name:	KTI12 ( <a href="#">KTI12 Products</a> )
Background:	KTI12 antibody, SBBI81 antibody, Protein KTI12 homolog antibody
UniProt:	<a href="#">Q96EK9</a>

## Application Details

---

Application Notes: Recommended dilution: WB:1:500-1:5000, IHC:1:200-1:500, IF:1:50-1:200,

---

Restrictions: For Research Use only

---

## Handling

---

Format: Liquid

---

Buffer: Preservative: 0.03 % Proclin 300  
Constituents: 50 % Glycerol, 0.01M PBS, pH 7.4

---

Preservative: ProClin

---

Precaution of Use: This product contains ProClin: a POISONOUS AND HAZARDOUS SUBSTANCE which should be handled by trained staff only.

---

Storage: -20 °C,-80 °C

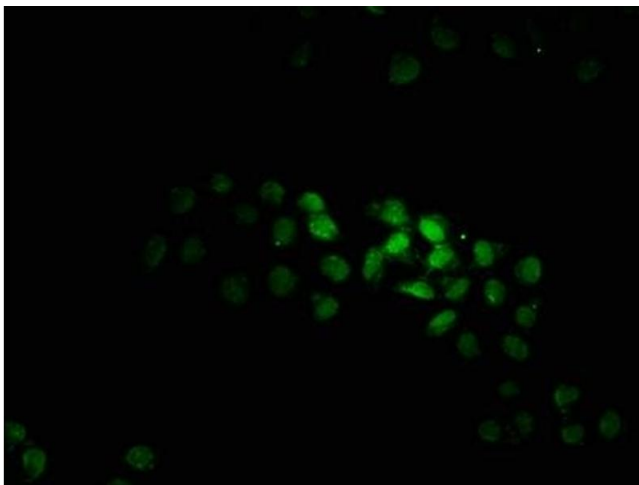
---

Storage Comment: Upon receipt, store at -20°C or -80°C. Avoid repeated freeze.

---

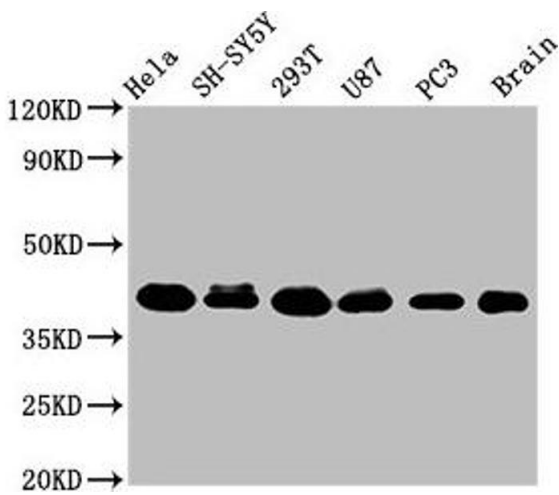
## Images

---



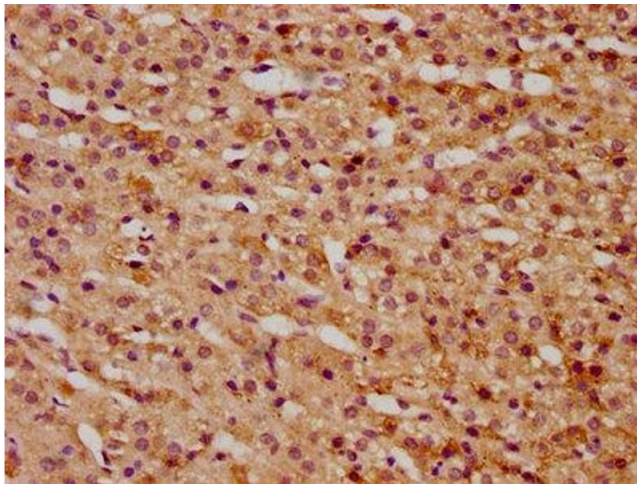
### Immunofluorescence

**Image 1.** Immunofluorescence staining of HeLa cells with ABIN7165725 at 1:100, counter-stained with DAPI. The cells were fixed in 4% formaldehyde, permeabilized using 0.2% Triton X-100 and blocked in 10% normal Goat Serum. The cells were then incubated with the antibody overnight at 4°C. The secondary antibody was Alexa Fluor 488-conjugated AffiniPure Goat Anti-Rabbit IgG(H+L).



### Western Blotting

**Image 2.** Western Blot Positive WB detected in: HeLa whole cell lysate, SH-SY5Y whole cell lysate, 293T whole cell lysate, U87 whole cell lysate, PC-3 whole cell lysate, Rat brain tissue All lanes: KT112 antibody at 3.2 µg/mL Secondary Goat polyclonal to rabbit IgG at 1/50000 dilution Predicted band size: 39 kDa Observed band size: 39 kDa



### Immunohistochemistry

**Image 3.** IHC image of ABIN7165725 diluted at 1:300 and staining in paraffin-embedded human adrenal gland tissue performed on a Leica Bond™ system. After dewaxing and hydration, antigen retrieval was mediated by high pressure in a citrate buffer (pH 6.0). Section was blocked with 10% normal goat serum 30min at RT. Then primary antibody (1% BSA) was incubated at 4°C overnight. The primary is detected by a biotinylated secondary antibody and visualized using an HRP conjugated SP system.