

Datasheet for ABIN7165742  
**anti-LIX1 antibody (AA 1-282)**[Go to Product page](#)

## 3 Images

## Overview

Quantity:	100 µg
Target:	LIX1
Binding Specificity:	AA 1-282
Reactivity:	Human
Host:	Rabbit
Clonality:	Polyclonal
Conjugate:	This LIX1 antibody is un-conjugated
Application:	ELISA, Western Blotting (WB), Immunohistochemistry (IHC), Immunofluorescence (IF)

## Product Details

Immunogen:	Recombinant Human Protein limb expression 1 homolog protein (1-282AA)
Isotype:	IgG
Cross-Reactivity:	Human, Mouse
Purification:	Antigen Affinity Purified

## Target Details

Target:	LIX1
Alternative Name:	LIX1 ( <a href="#">LIX1 Products</a> )
Background:	Background: cytoplasm, autophagosome maturation, autophagy Aliases: C5orf11 antibody, Limb expression 1 antibody, LIX1 antibody, Lix1 homolog (chicken)

## Target Details

antibody, LIX1\_HUMAN antibody, Protein limb expression 1 homolog antibody

UniProt: [Q8N485](#)

## Application Details

Application Notes: Recommended dilution: WB:1:500-1:2000, IHC:1:20-1:200, IF:1:10-1:100,

Restrictions: For Research Use only

## Handling

Format: Liquid

Buffer: Preservative: 0.03 % Proclin 300  
Constituents: 50 % Glycerol, 0.01M PBS, PH 7.4

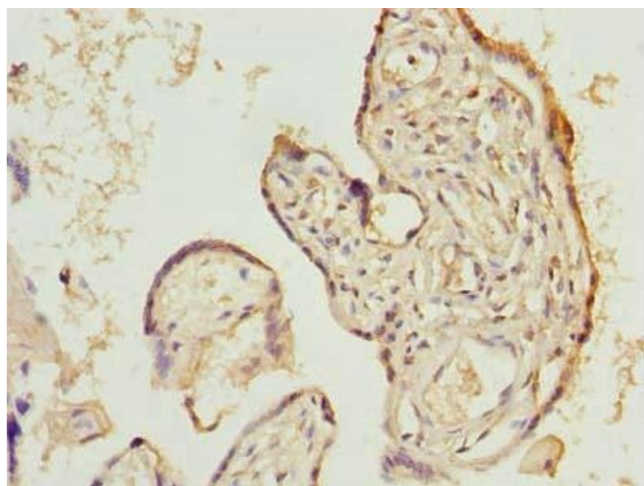
Preservative: ProClin

Precaution of Use: This product contains ProClin: a POISONOUS AND HAZARDOUS SUBSTANCE which should be handled by trained staff only.

Storage: -20 °C,-80 °C

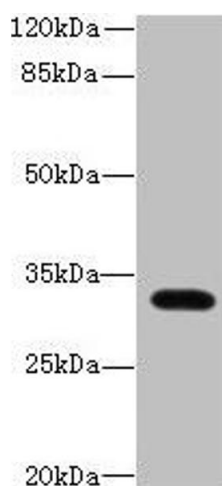
Storage Comment: Upon receipt, store at -20°C or -80°C. Avoid repeated freeze.

## Images



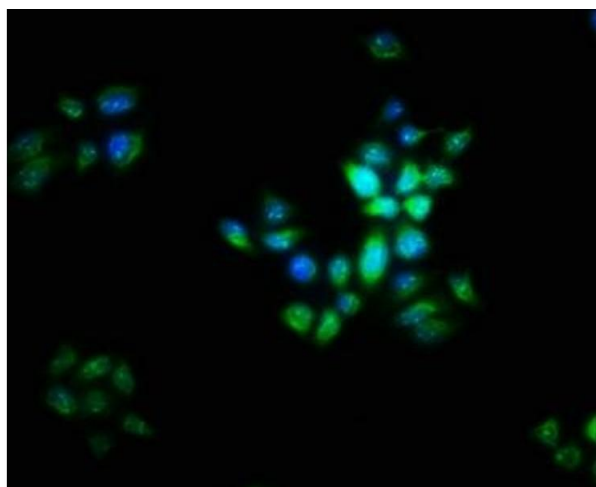
### Immunohistochemistry

**Image 1.** Immunohistochemistry of paraffin-embedded human placenta tissue using ABIN7165742 at dilution of 1:100



### Western Blotting

**Image 2.** Western blot All lanes: LIX1 antibody at 0.5 µg/mL + Mouse heart tissue Secondary Goat polyclonal to rabbit IgG at 1/10000 dilution Predicted band size: 32 kDa Observed band size: 32 kDa



### Immunofluorescence

**Image 3.** Immunofluorescence staining of PC-3 cells with ABIN7165742 at 1:16, counter-stained with DAPI. The cells were fixed in 4% formaldehyde, permeabilized using 0.2% Triton X-100 and blocked in 10% normal Goat Serum. The cells were then incubated with the antibody overnight at 4°C. The secondary antibody was Alexa Fluor 488-conjugated AffiniPure Goat Anti-Rabbit IgG(H+L).