

Datasheet for ABIN7165758
anti-LIN7A antibody (AA 1-233)[Go to Product page](#)

1 Image

Overview

Quantity:	100 µg
Target:	LIN7A
Binding Specificity:	AA 1-233
Reactivity:	Human
Host:	Rabbit
Clonality:	Polyclonal
Conjugate:	This LIN7A antibody is un-conjugated
Application:	Western Blotting (WB), ELISA

Product Details

Immunogen:	Recombinant Human Protein lin-7 homolog A protein (1-233AA)
Isotype:	IgG
Cross-Reactivity:	Human, Mouse
Purification:	>95%, Protein G purified

Target Details

Target:	LIN7A
Alternative Name:	LIN7A (LIN7A Products)
Background:	Background: Plays a role in establishing and maintaining the asymmetric distribution of channels and receptors at the plasma membrane of polarized cells. Forms membrane-

Target Details

associated multiprotein complexes that may regulate delivery and recycling of proteins to the correct membrane domains. The tripartite complex composed of LIN7 (LIN7A, LIN7B or LIN7C), CASK and APBA1 may have the potential to couple synaptic vesicle exocytosis to cell adhesion in brain. Ensures the proper localization of GRIN2B (subunit 2B of the NMDA receptor) to neuronal postsynaptic density and may function in localizing synaptic vesicles at synapses where it is recruited by beta-catenin and cadherin. Required to localize Kir2 channels, GABA transporter (SLC6A12) and EGFR/ERBB1, ERBB2, ERBB3 and ERBB4 to the basolateral membrane of epithelial cells.

Aliases: hLin-7 antibody, Lin 7 homolog A (C. elegans) antibody, LIN 7A antibody, Lin-7A antibody, LIN7 antibody, LIN7A antibody, LIN7A_HUMAN antibody, MALS-1 antibody, Mammalian LIN 7 1 antibody, Mammalian lin-seven protein 1 antibody, Protein lin-7 homolog A antibody, Tax interaction protein 33 antibody, TIP-33 antibody, Veli-1 antibody, VELI1 antibody, Vertebrate lin-7 homolog 1 antibody, Vertebrate LIN7 homolog 1 antibody

UniProt: [014910](#)

Pathways: [Synaptic Membrane](#)

Application Details

Application Notes: Recommended dilution: WB:1:1000-1:5000,

Restrictions: For Research Use only

Handling

Format: Liquid

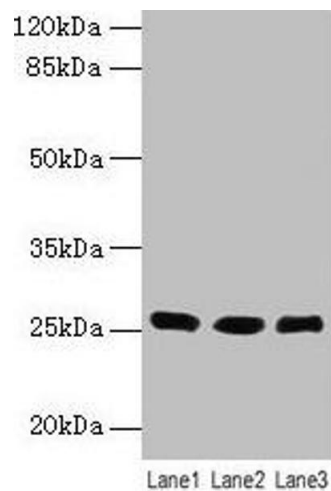
Buffer: Preservative: 0.03 % Proclin 300
Constituents: 50 % Glycerol, 0.01M PBS, PH 7.4

Preservative: ProClin

Precaution of Use: This product contains ProClin: a POISONOUS AND HAZARDOUS SUBSTANCE which should be handled by trained staff only.

Storage: -20 °C,-80 °C

Storage Comment: Upon receipt, store at -20°C or -80°C. Avoid repeated freeze.



Western Blotting

Image 1. Western blot All lanes: LIN7A antibody at 6 μ g/mL Lane 1: Human placenta tissue Lane 2: Mouse kidney tissue Lane 3: Mouse liver tissue Secondary Goat polyclonal to rabbit IgG at 1/10000 dilution Predicted band size: 26 kDa Observed band size: 26 kDa