



[Go to Product page](#)

Datasheet for ABIN7165770  
**anti-LTV1 antibody (AA 201-475)**

2 Images

Overview

Quantity:	100 µg
Target:	LTV1
Binding Specificity:	AA 201-475
Reactivity:	Human
Host:	Rabbit
Clonality:	Polyclonal
Conjugate:	This LTV1 antibody is un-conjugated
Application:	ELISA, Immunohistochemistry (IHC)

Product Details

Immunogen:	Recombinant Human Protein LTV1 homolog protein (201-475AA)
Isotype:	IgG
Cross-Reactivity:	Human
Purification:	>95%, Protein G purified

Target Details

Target:	LTV1
Alternative Name:	LTV1 ( <a href="#">LTV1 Products</a> )
Background:	Background: cytoplasm, nucleoplasm Aliases: C6orf93 antibody, Chromosome 6 open reading frame 93 antibody, dJ468K18.4

## Target Details

antibody, FLJ14909 antibody, FLJ18519 antibody, Ltv1 antibody, LTV1 homolog (S. cerevisiae) antibody, LTV1\_HUMAN antibody, OTTHUMP00000017340 antibody, Protein LTV1 homolog antibody

UniProt: [Q96GA3](#)

## Application Details

Application Notes: Recommended dilution: IHC:1:20-1:200,

Restrictions: For Research Use only

## Handling

Format: Liquid

Buffer: Preservative: 0.03 % Proclin 300  
Constituents: 50 % Glycerol, 0.01M PBS, PH 7.4

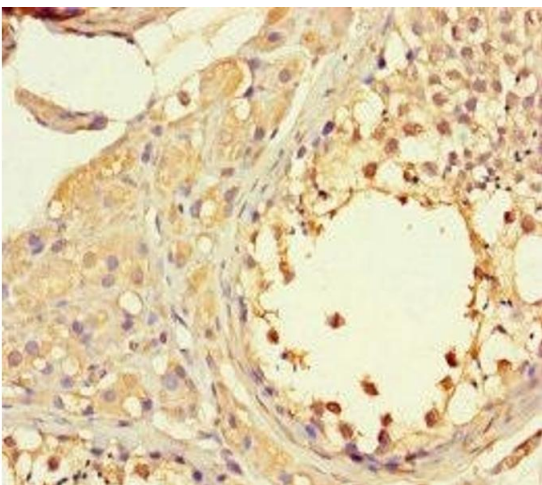
Preservative: ProClin

Precaution of Use: This product contains ProClin: a POISONOUS AND HAZARDOUS SUBSTANCE which should be handled by trained staff only.

Storage: -20 °C,-80 °C

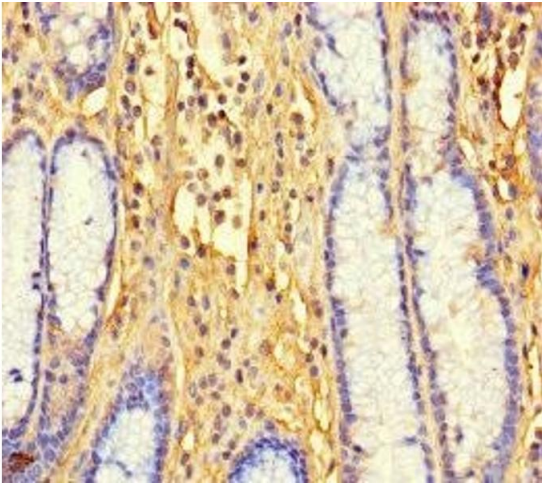
Storage Comment: Upon receipt, store at -20°C or -80°C. Avoid repeated freeze.

## Images



### Immunohistochemistry

**Image 1.** Immunohistochemistry of paraffin-embedded human testis tissue using ABIN7165770 at dilution of 1:100



### Immunohistochemistry

**Image 2.** Immunohistochemistry of paraffin-embedded human gastric cancer using ABIN7165770 at dilution of 1:100