

Datasheet for ABIN7165774  
**anti-MTDH antibody (AA 1-260)**[Go to Product page](#)

## 3 Images

## Overview

Quantity:	100 µL
Target:	MTDH
Binding Specificity:	AA 1-260
Reactivity:	Human
Host:	Rabbit
Clonality:	Polyclonal
Conjugate:	This MTDH antibody is un-conjugated
Application:	Immunohistochemistry (IHC), ELISA, Immunoprecipitation (IP)

## Product Details

Immunogen:	Recombinant Human Protein LYRIC protein (1-260AA)
Isotype:	IgG
Cross-Reactivity:	Human
Purification:	Antigen Affinity Purified

## Target Details

Target:	MTDH
Alternative Name:	MTDH ( <a href="#">MTDH Products</a> )
Background:	Background: Downregulates SLC1A2/EAAT2 promoter activity when expressed ectopically. Activates the nuclear factor kappa-B (NF-kappa-B) transcription factor. Promotes anchorage-

## Target Details

independent growth of immortalized melanocytes and astrocytes which is a key component in tumor cell expansion. Promotes lung metastasis and also has an effect on bone and brain metastasis, possibly by enhancing the seeding of tumor cells to the target organ endothelium. Induces chemoresistance.

Aliases: 3D3 antibody, 3D3/LYRIC antibody, AEG 1 antibody, AEG-1 antibody, AEG1 antibody, Astrocyte elevated gene 1 antibody, Astrocyte elevated gene-1 protein antibody, LYRIC antibody, LYRIC/3D3 antibody, LYRIC\_HUMAN antibody, Lysine rich CEACAM1 associated protein antibody, Lysine rich CEACAM1 co isolated protein antibody, Lysine-rich CEACAM1 co-isolated protein antibody, Metadherin antibody, Metastasis adhesion protein antibody, MTDH antibody, Protein LYRIC antibody

UniProt: [Q86UE4](#)

Pathways: [Cellular Response to Molecule of Bacterial Origin](#), [Cell-Cell Junction Organization](#)

## Application Details

Application Notes: Recommended dilution: IHC:1:20-1:200, IP:1:200-1:2000,

Restrictions: For Research Use only

## Handling

Format: Liquid

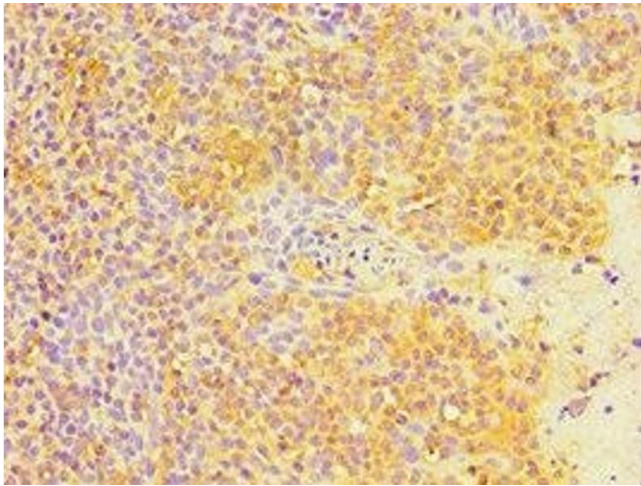
Buffer: PBS with 0.02 % sodium azide, 50 % glycerol, pH 7.3.

Preservative: Sodium azide

Precaution of Use: This product contains Sodium azide: a POISONOUS AND HAZARDOUS SUBSTANCE which should be handled by trained staff only.

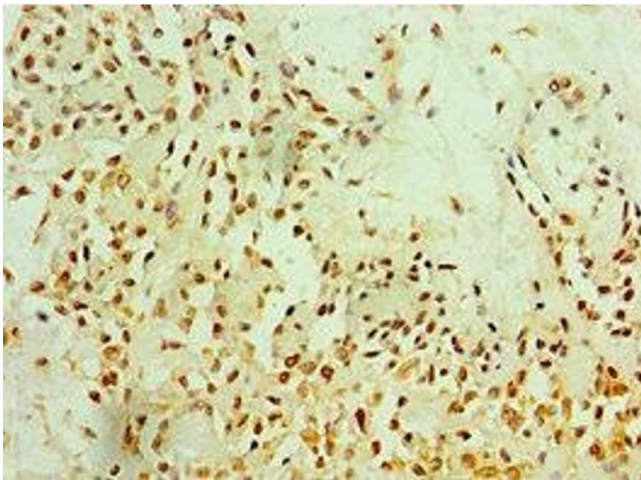
Storage: -20 °C,-80 °C

Storage Comment: Upon receipt, store at -20°C or -80°C. Avoid repeated freeze.



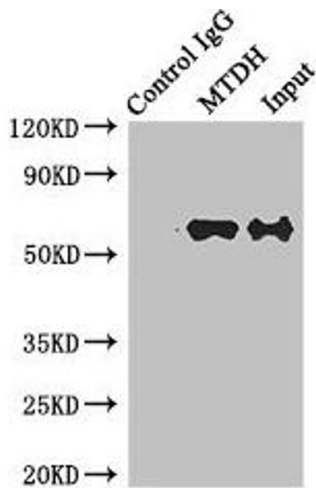
#### Immunohistochemistry

**Image 1.** Immunohistochemistry of paraffin-embedded human tonsil tissue using ABIN7165774 at dilution of 1:100



#### Immunohistochemistry

**Image 2.** Immunohistochemistry of paraffin-embedded human breast cancer using ABIN7165774 at dilution of 1:100



#### Western Blotting

**Image 3.** Immunoprecipitating MTDH in HeLa whole cell lysate Lane 1: Rabbit control IgG instead of (1  $\mu$ g) instead of ABIN7165774 in HeLa whole cell lysate. For western blotting, a HRP-conjugated anti-rabbit IgG, specific to the non-reduced form of IgG was used as the Secondary antibody (1/50000) Lane 2: ABIN7165774 (4  $\mu$ g) + HeLa whole cell lysate (500  $\mu$ g) Lane 3: HeLa whole cell lysate (20  $\mu$ g)