



[Go to Product page](#)

Datasheet for ABIN7165775
anti-MAB21L2 antibody (AA 1-300)

2 Images

Overview

Quantity:	100 µg
Target:	MAB21L2
Binding Specificity:	AA 1-300
Reactivity:	Human
Host:	Rabbit
Clonality:	Polyclonal
Conjugate:	This MAB21L2 antibody is un-conjugated
Application:	ELISA, Western Blotting (WB), Immunofluorescence (IF)

Product Details

Immunogen:	Recombinant Human Protein mab-21-like 2 protein (1-300AA)
Isotype:	IgG
Cross-Reactivity:	Human, Mouse
Purification:	>95%, Protein G purified

Target Details

Target:	MAB21L2
Alternative Name:	MAB21L2 (MAB21L2 Products)
Background:	Background: Required for several aspects of embryonic development including normal development of the eye.

Target Details

Aliases: MAB21L2 antibody, Protein mab-21-like 2 antibody

UniProt: [Q9Y586](#)

Pathways: [Embryonic Body Morphogenesis](#)

Application Details

Application Notes: Recommended dilution: WB:1:500-1:5000, IF:1:50-1:200,

Restrictions: For Research Use only

Handling

Format: Liquid

Buffer: Preservative: 0.03 % Proclin 300
Constituents: 50 % Glycerol, 0.01M PBS, pH 7.4

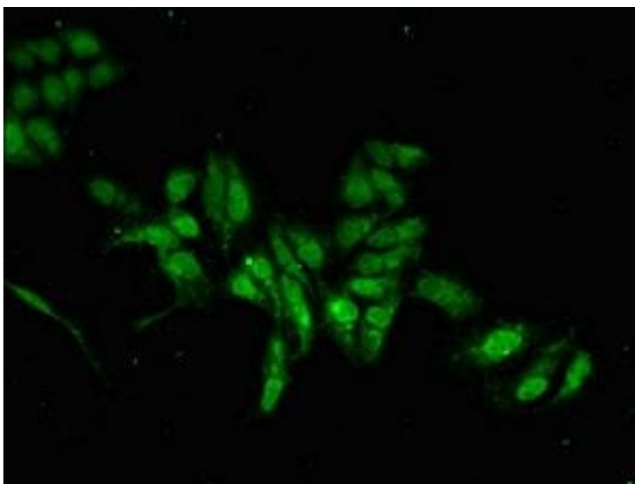
Preservative: ProClin

Precaution of Use: This product contains ProClin: a POISONOUS AND HAZARDOUS SUBSTANCE which should be handled by trained staff only.

Storage: -20 °C,-80 °C

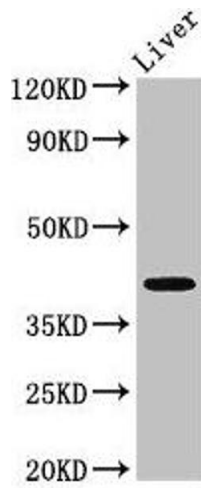
Storage Comment: Upon receipt, store at -20°C or -80°C. Avoid repeated freeze.

Images



Immunofluorescence

Image 1. Immunofluorescent analysis of HeLa cells using ABIN7165775 at dilution of 1:100 and Alexa Fluor 488-conjugated AffiniPure Goat Anti-Rabbit IgG(H+L)



Western Blotting

Image 2. Western Blot Positive WB detected in: Mouse liver tissue All lanes: MAB21L2 antibody at 3 μ g/mL Secondary Goat polyclonal to rabbit IgG at 1/50000 dilution Predicted band size: 41 kDa Observed band size: 41 kDa