

Datasheet for ABIN7165779
anti-MAEL antibody (AA 1-200)[Go to Product page](#)

2 Images

Overview

Quantity:	100 µg
Target:	MAEL
Binding Specificity:	AA 1-200
Reactivity:	Human
Host:	Rabbit
Clonality:	Polyclonal
Conjugate:	This MAEL antibody is un-conjugated
Application:	ELISA, Immunohistochemistry (IHC), Immunofluorescence (IF)

Product Details

Immunogen:	Recombinant Human Protein maelstrom homolog protein (1-200AA)
Isotype:	IgG
Cross-Reactivity:	Human
Purification:	>95%, Protein G purified

Target Details

Target:	MAEL
Alternative Name:	MAEL (MAEL Products)
Background:	Background: Plays a central role during spermatogenesis by repressing transposable elements and preventing their mobilization, which is essential for the germline integrity. Acts via the

Target Details

piRNA metabolic process, which mediates the repression of transposable elements during meiosis by forming complexes composed of piRNAs and Piwi proteins and governs the methylation and subsequent repression of transposons. Its association with piP-bodies suggests a participation in the secondary piRNAs metabolic process. Required for the localization of germ-cell factors to the meiotic nuage (By similarity).

Aliases: cancer/testis antigen 128 antibody, CT128 antibody, FLJ14904 antibody, mael antibody, MAEL_HUMAN antibody, maelstrom homolog (Drosophila) antibody, Maelstrom homolog antibody, OTTHUMP00000032344 antibody, Protein maelstrom homolog antibody, RP11-102C16.1 antibody

UniProt: [Q96JY0](#)

Application Details

Application Notes: Recommended dilution: IHC:1:20-1:200, IF:1:50-1:200,

Restrictions: For Research Use only

Handling

Format: Liquid

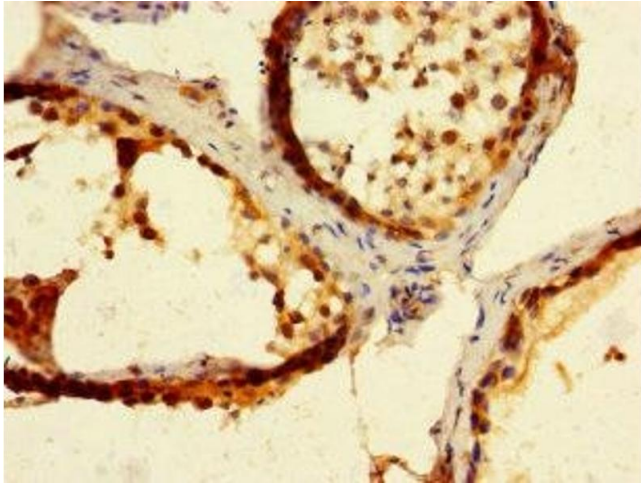
Buffer: Preservative: 0.03 % Proclin 300
Constituents: 50 % Glycerol, 0.01M PBS, PH 7.4

Preservative: ProClin

Precaution of Use: This product contains ProClin: a POISONOUS AND HAZARDOUS SUBSTANCE which should be handled by trained staff only.

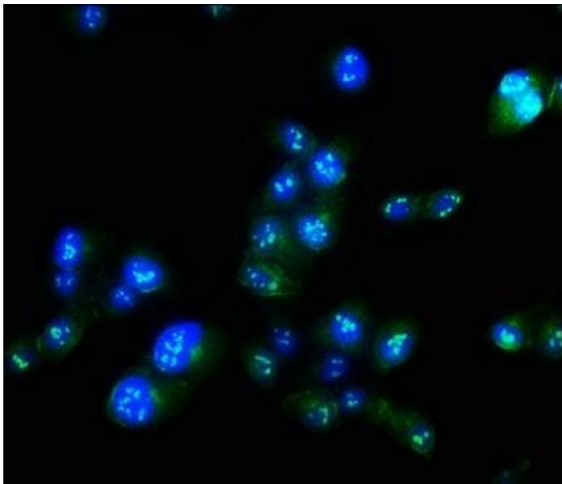
Storage: -20 °C,-80 °C

Storage Comment: Upon receipt, store at -20°C or -80°C. Avoid repeated freeze.



Immunohistochemistry

Image 1. Immunohistochemistry of paraffin-embedded human testis tissue using ABIN7165779 at dilution of 1:100



Immunofluorescence

Image 2. Immunofluorescence staining of HeLa cells with ABIN7165779 at 1:100, counter-stained with DAPI. The cells were fixed in 4 % formaldehyde, permeabilized using 0.2 % Triton X-100 and blocked in 10 % normal Goat Serum. The cells were then incubated with the antibody overnight at 4 °C. The secondary antibody was Alexa Fluor 488-conjugated AffiniPure Goat Anti-Rabbit IgG(H+L).