



[Go to Product page](#)

Datasheet for ABIN7165879

anti-POGLUT1 antibody (AA 132-392)

2 Images

Overview

Quantity:	100 µL
Target:	POGLUT1
Binding Specificity:	AA 132-392
Reactivity:	Human
Host:	Rabbit
Clonality:	Polyclonal
Conjugate:	This POGLUT1 antibody is un-conjugated
Application:	Western Blotting (WB), ELISA, Immunohistochemistry (IHC)

Product Details

Immunogen:	Recombinant Human Protein O-glycosyltransferase 1 protein (132-392AA)
Isotype:	IgG
Cross-Reactivity:	Human
Purification:	>95%, Protein G purified

Target Details

Target:	POGLUT1
Alternative Name:	POGLUT1 (POGLUT1 Products)
Background:	Background: Dual specificity glycosyltransferase that catalyzes the transfer of glucose and xylose from UDP-glucose and UDP-xylose, respectively, to a serine residue found in the

Target Details

consensus sequence of C-X-S-X-P-C (PubMed:21081508, PubMed:21490058, PubMed:21949356, PubMed:27807076). Specifically targets extracellular EGF repeats of protein such as CRB2, F7, F9 and NOTCH2 (PubMed:21081508, PubMed:21490058, PubMed:21949356, PubMed:27807076). Acts as a positive regulator of Notch signaling by mediating O-glycosylation of Notch, leading to regulate muscle development (PubMed:27807076). Notch glucosylation does not affect Notch ligand binding (PubMed:21490058). Required during early development to promote gastrulation: acts by mediating O-glycosylation of CRB2, which is required for CRB2 localization to the cell membrane (By similarity).

Aliases: C3orf9 antibody, CAP10 like 46 kDa protein antibody, CAP10 like protein, 46 kDa antibody, CAP10-like 46 kDa protein antibody, CLP46 antibody, hCLP46 antibody, hRumi antibody, KDELC family like 1 antibody, KDELC1 antibody, KTEL (Lys Tyr Glu Leu) containing 1 antibody, KTEL motif containing protein 1 antibody, KTEL motif-containing protein 1 antibody, KTEL1 antibody, KTELC1 antibody, MDS010 antibody, MDSRP antibody, Myelodysplastic syndromes relative protein antibody, O-glycosyltransferase rumi homolog antibody, PGLT1_HUMAN antibody, Poglut1 antibody, protein O glucosyltransferase 1 antibody, Protein O-glycosyltransferase 1 antibody, Protein O-xylosyltransferase antibody, Rumi antibody, x 010 protein antibody

UniProt: [Q8NBL1](#)

Pathways: [Notch Signaling](#)

Application Details

Application Notes: Recommended dilution: WB:1:1000-1:5000, IHC:1:200-1:500,

Restrictions: For Research Use only

Handling

Format: Liquid

Buffer: Preservative: 0.03 % Proclin 300
Constituents: 50 % Glycerol, 0.01M PBS, pH 7.4

Preservative: ProClin

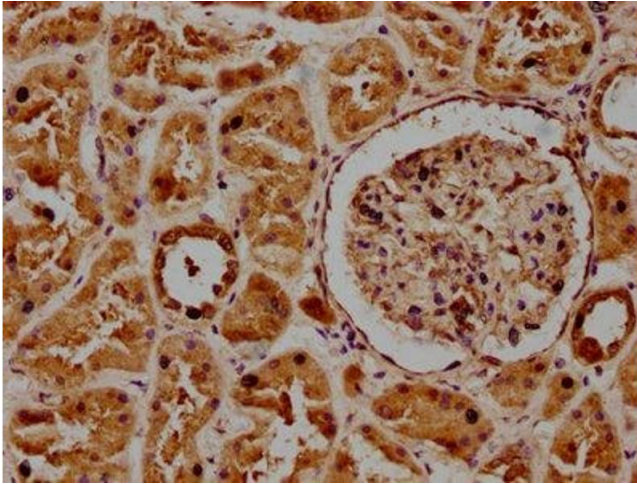
Precaution of Use: This product contains ProClin: a POISONOUS AND HAZARDOUS SUBSTANCE which should be handled by trained staff only.

Handling

Storage: -20 °C,-80 °C

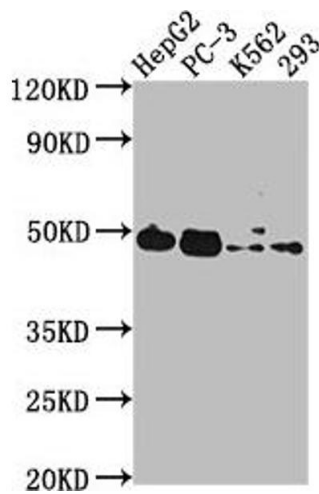
Storage Comment: Upon receipt, store at -20°C or -80°C. Avoid repeated freeze.

Images



Immunohistochemistry

Image 1. IHC image of ABIN7165879 diluted at 1:300 and staining in paraffin-embedded human kidney tissue performed on a Leica Bond™ system. After dewaxing and hydration, antigen retrieval was mediated by high pressure in a citrate buffer (pH 6.0). Section was blocked with 10 % normal goat serum 30 min at RT. Then primary antibody (1 % BSA) was incubated at 4 °C overnight. The primary is detected by a biotinylated secondary antibody and visualized using an HRP conjugated SP system.



Western Blotting

Image 2. Western Blot Positive WB detected in: HepG2 whole cell lysate, PC-3 whole cell lysate, K562 whole cell lysate, 293 whole cell lysate All lanes: POGLUT1 antibody at 1:2000 Secondary Goat polyclonal to rabbit IgG at 1/50000 dilution Predicted band size: 47 kDa Observed band size: 47 kDa