

Datasheet for ABIN7165903
anti-Patched 1 antibody (AA 1180-1411)[Go to Product page](#)

2 Images

Overview

Quantity:	100 µg
Target:	Patched 1 (PTCH1)
Binding Specificity:	AA 1180-1411
Reactivity:	Human
Host:	Rabbit
Clonality:	Polyclonal
Conjugate:	This Patched 1 antibody is un-conjugated
Application:	ELISA, Immunohistochemistry (IHC), Immunofluorescence (IF)

Product Details

Immunogen:	Recombinant Human Protein patched homolog 1 protein (1180-1411AA)
Isotype:	IgG
Cross-Reactivity:	Human
Purification:	>95%, Protein G purified

Target Details

Target:	Patched 1 (PTCH1)
Alternative Name:	PTCH1 (PTCH1 Products)
Background:	Background: Acts as a receptor for sonic hedgehog (SHH), indian hedgehog (IHH) and desert hedgehog (DHH). Associates with the smoothened protein (SMO) to transduce the hedgehog's

Target Details

proteins signal. Seems to have a tumor suppressor function, as inactivation of this protein is probably a necessary, if not sufficient step for tumorigenesis.

Aliases: A230106A15Rik antibody, BCNS antibody, FLJ26746 antibody, FLJ42602 antibody, Holoprosencephaly 7 antibody, HPE7 antibody, mes antibody, NBCCS antibody, OTTHUMP00000021709 antibody, OTTHUMP00000021710 antibody, Patched antibody, Patched (Drosophila) homolog antibody, Patched 1 antibody, Patched homolog (Drosophila) antibody, Patched homolog 1 (Drosophila) antibody, Patched homolog 1 antibody, Patched protein homolog 1 antibody, Protein patched homolog 1 antibody, PTC antibody, PTC1 antibody, PTC1_HUMAN antibody, PTCH antibody, PTCH protein +12b antibody, PTCH protein +4' antibody, PTCH protein -10 antibody, PTCH protein antibody, ptch1 antibody, PTCH1 protein antibody, PTCH11 antibody, Ptch2 antibody

UniProt: [Q13635](#)

Pathways: [Hedgehog Signaling](#), [Carbohydrate Homeostasis](#), [Tube Formation](#)

Application Details

Application Notes: Recommended dilution: IHC:1:20-1:200, IF:1:50-1:200,

Restrictions: For Research Use only

Handling

Format: Liquid

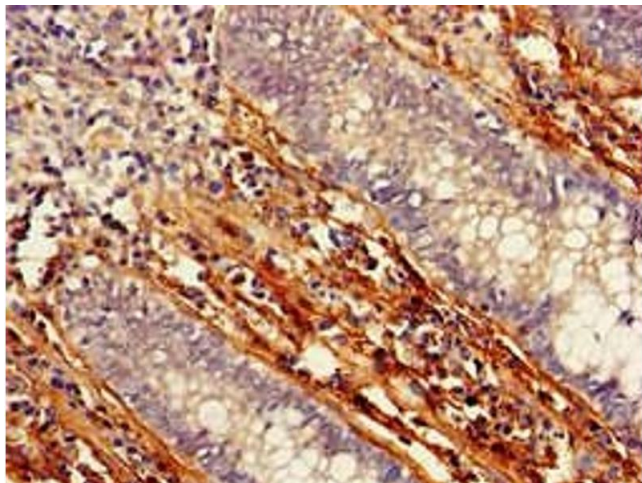
Buffer: Preservative: 0.03 % Proclin 300
Constituents: 50 % Glycerol, 0.01M PBS, pH 7.4

Preservative: ProClin

Precaution of Use: This product contains ProClin: a POISONOUS AND HAZARDOUS SUBSTANCE which should be handled by trained staff only.

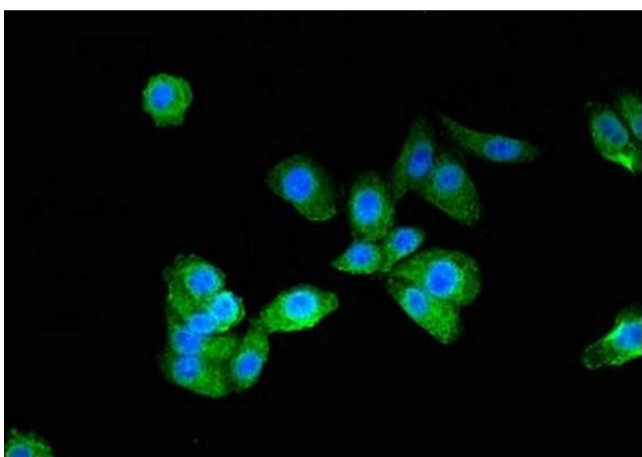
Storage: -20 °C, -80 °C

Storage Comment: Upon receipt, store at -20°C or -80°C. Avoid repeated freeze.



Immunohistochemistry

Image 1. Immunohistochemistry of paraffin-embedded human colon cancer using ABIN7165903 at dilution of 1:100



Immunofluorescence

Image 2. Immunofluorescent analysis of HepG2 cells using ABIN7165903 at dilution of 1:100 and Alexa Fluor 488-conjugated AffiniPure Goat Anti-Rabbit IgG(H+L)