



Datasheet for ABIN7165923

## anti-PPP1R12C antibody (Regulatory Subunit 12C)



[Go to Product page](#)

### 2 Images

#### Overview

Quantity:	100 µg
Target:	PPP1R12C
Binding Specificity:	AA 317-450, Regulatory Subunit 12C
Reactivity:	Human
Host:	Rabbit
Clonality:	Polyclonal
Conjugate:	This PPP1R12C antibody is un-conjugated
Application:	ELISA, Immunohistochemistry (IHC), Immunofluorescence (IF)

#### Product Details

Immunogen:	Recombinant Human Protein phosphatase 1 regulatory subunit 12C protein (317-450AA)
Isotype:	IgG
Cross-Reactivity:	Human
Purification:	>95%, Protein G purified

#### Target Details

Target:	PPP1R12C
Alternative Name:	PPP1R12C ( <a href="#">PPP1R12C Products</a> )
Background:	Background: Regulates myosin phosphatase activity. Aliases: LENG 3 antibody, LENG3 antibody, leukocyte receptor cluster (LRC) encoded novel

## Target Details

---

gene 3 antibody, leukocyte receptor cluster (LRC) member 3 antibody, MBS 85 antibody, MBS85 antibody, Myosin binding subunit 85 antibody, p84 antibody, p85 antibody, PP12C\_HUMAN antibody, Ppp1r12c antibody, protein phosphatase 1 regulatory (inhibitor) subunit 12C antibody, protein phosphatase 1 myosin binding subunit of 85 kDa antibody, protein phosphatase 1 myosin binding subunit p85 antibody, Protein phosphatase 1 myosin-binding subunit of 85 kDa antibody, Protein phosphatase 1 myosin-binding subunit p85 antibody, Protein phosphatase 1 regulatory subunit 12C antibody

UniProt: [Q9BZL4](#)

## Application Details

---

Application Notes: Recommended dilution: IHC:1:20-1:200, IF:1:50-1:200,

Restrictions: For Research Use only

## Handling

---

Format: Liquid

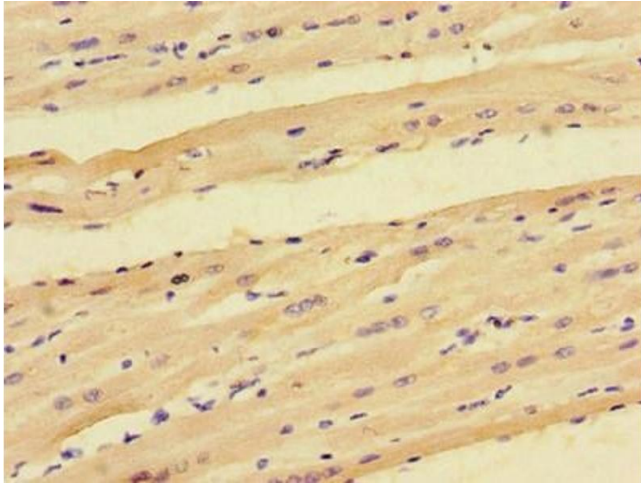
Buffer: Preservative: 0.03 % Proclin 300  
Constituents: 50 % Glycerol, 0.01M PBS, PH 7.4

Preservative: ProClin

Precaution of Use: This product contains ProClin: a POISONOUS AND HAZARDOUS SUBSTANCE which should be handled by trained staff only.

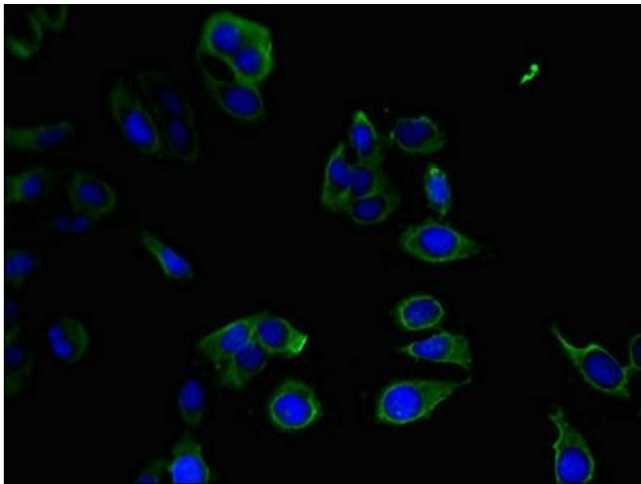
Storage: -20 °C,-80 °C

Storage Comment: Upon receipt, store at -20°C or -80°C. Avoid repeated freeze.



### Immunohistochemistry

**Image 1.** Immunohistochemistry of paraffin-embedded human heart tissue using ABIN7165923 at dilution of 1:100



### Immunofluorescence

**Image 2.** Immunofluorescent analysis of HeLa cells using ABIN7165923 at dilution of 1:100 and Alexa Fluor 488-conjugated AffiniPure Goat Anti-Rabbit IgG(H+L)