

Datasheet for ABIN7165927

anti-CPI-17 antibody (Regulatory Subunit 14A)**2** Images[Go to Product page](#)

Overview

Quantity:	100 µg
Target:	CPI-17 (PPP1R14A)
Binding Specificity:	AA 1-147, Regulatory Subunit 14A
Reactivity:	Human
Host:	Rabbit
Clonality:	Polyclonal
Conjugate:	This CPI-17 antibody is un-conjugated
Application:	ELISA, Immunohistochemistry (IHC)

Product Details

Immunogen:	Recombinant Human Protein phosphatase 1 regulatory subunit 14A protein (1-147AA)
Isotype:	IgG
Cross-Reactivity:	Human
Purification:	>95%, Protein G purified

Target Details

Target:	CPI-17 (PPP1R14A)
Alternative Name:	PPP1R14A (PPP1R14A Products)
Background:	Background: Inhibitor of PPP1CA. Has over 1000-fold higher inhibitory activity when phosphorylated, creating a molecular switch for regulating the phosphorylation status of

Target Details

PPP1CA substrates and smooth muscle contraction.

Aliases: 17 kDa PKC-potentiated inhibitory protein of PP1 antibody, 17-KDa protein antibody, 17 kDa PKC potentiated inhibitory protein of PP1 antibody, CPI 17 alpha antibody, CPI 17 antibody, CPI 17alpha antibody, CPI-17 antibody, CPI17 alpha antibody, CPI17 antibody, PKC potentiated inhibitory protein of PP1 antibody, PKC potentiated inhibitory protein of PP1, 17-KD antibody, PP14A_HUMAN antibody, PPP1INL antibody, Ppp1r14a antibody, Protein kinase C-potentiated inhibitor of protein phosphatase 1, 17-KD antibody, Protein kinase C-potentiated inhibitor protein of 17 kDa antibody, Protein phosphatase 1 antibody, Protein phosphatase 1 regulatory (inhibitor) subunit 14A antibody, Protein phosphatase 1 regulatory subunit 14A antibody, Regulatory subunit 14A antibody

UniProt: [Q96A00](#)

Application Details

Application Notes: Recommended dilution: IHC:1:20-1:200,

Restrictions: For Research Use only

Handling

Format: Liquid

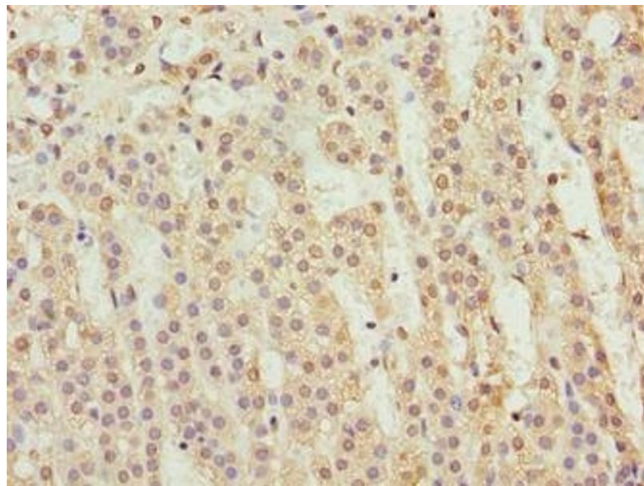
Buffer: Preservative: 0.03 % Proclin 300
Constituents: 50 % Glycerol, 0.01M PBS, PH 7.4

Preservative: ProClin

Precaution of Use: This product contains ProClin: a POISONOUS AND HAZARDOUS SUBSTANCE which should be handled by trained staff only.

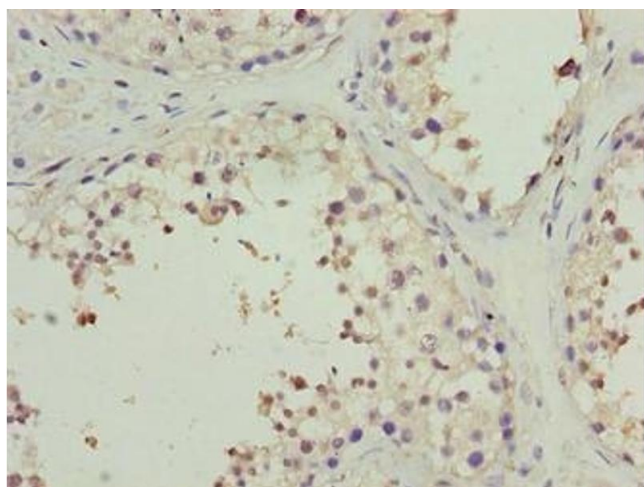
Storage: -20 °C,-80 °C

Storage Comment: Upon receipt, store at -20°C or -80°C. Avoid repeated freeze.



Immunohistochemistry

Image 1. Immunohistochemistry of paraffin-embedded human adrenal gland tissue using ABIN7165927 at dilution of 1:100



Immunohistochemistry

Image 2. Immunohistochemistry of paraffin-embedded human testis tissue using ABIN7165927 at dilution of 1:100