

Datasheet for ABIN7165933

anti-PPP1R3B antibody (Regulatory Subunit 3B)[Go to Product page](#)

4 Images

Overview

Quantity:	100 µg
Target:	PPP1R3B
Binding Specificity:	AA 1-285, Regulatory Subunit 3B
Reactivity:	Human
Host:	Rabbit
Clonality:	Polyclonal
Conjugate:	This PPP1R3B antibody is un-conjugated
Application:	Western Blotting (WB), ELISA, Immunohistochemistry (IHC)

Product Details

Immunogen:	Recombinant Human Protein phosphatase 1 regulatory subunit 3B protein (1-285AA)
Isotype:	IgG
Cross-Reactivity:	Human, Mouse, Rat
Purification:	>95%, Protein G purified

Target Details

Target:	PPP1R3B
Alternative Name:	PPP1R3B (PPP1R3B Products)
Background:	Background: Acts as a glycogen-targeting subunit for phosphatase PP1. Facilitates interaction of the PP1 with enzymes of the glycogen metabolism and regulates its activity. Suppresses the

Target Details

rate at which PP1 dephosphorylates (inactivates) glycogen phosphorylase and enhances the rate at which it activates glycogen synthase and therefore limits glycogen breakdown. Its activity is inhibited by PYGL, resulting in inhibition of the glycogen synthase and glycogen phosphorylase phosphatase activities of PP1. Dramatically increases basal and insulin-stimulated glycogen synthesis upon overexpression in hepatocytes.

Aliases: FLJ14005 antibody, FLJ34675 antibody, GL antibody, Hepatic glycogen targeting protein phosphatase 1 regulatory subunit GL antibody, Hepatic glycogen targeting subunit G(L) antibody, Hepatic glycogen-targeting protein phosphatase 1 regulatory subunit GL antibody, PP1 subunit R4 antibody, Ppp1r3b antibody, PPP1R4 antibody, PPR3B_HUMAN antibody, Protein phosphatase 1 regulatory (inhibitor) subunit 3B antibody, Protein phosphatase 1 regulatory subunit 3B antibody, Protein phosphatase 1 regulatory subunit 4 antibody, Protein phosphatase 1 subunit 4 antibody, Protein phosphatase 1 subunit GL antibody, PTG antibody, R4 antibody

UniProt: [Q86XI6](#)

Pathways: [Cellular Glucan Metabolic Process](#), [Regulation of Carbohydrate Metabolic Process](#)

Application Details

Application Notes: Recommended dilution: WB:1:500-1:5000, IHC:1:20-1:200,

Restrictions: For Research Use only

Handling

Format: Liquid

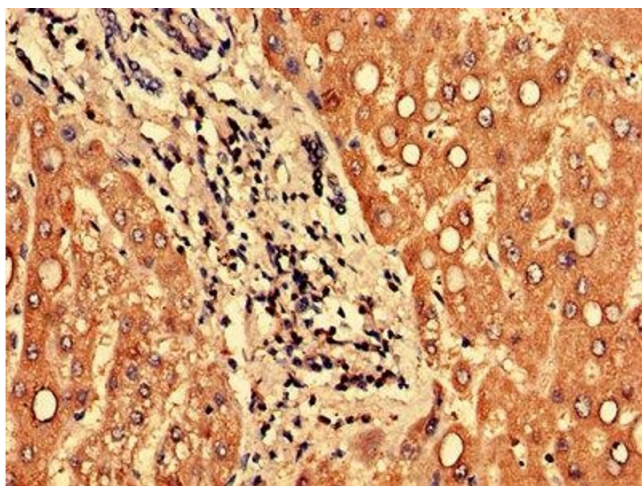
Buffer: Preservative: 0.03 % Proclin 300
Constituents: 50 % Glycerol, 0.01M PBS, PH 7.4

Preservative: ProClin

Precaution of Use: This product contains ProClin: a POISONOUS AND HAZARDOUS SUBSTANCE which should be handled by trained staff only.

Storage: -20 °C,-80 °C

Storage Comment: Upon receipt, store at -20°C or -80°C. Avoid repeated freeze.



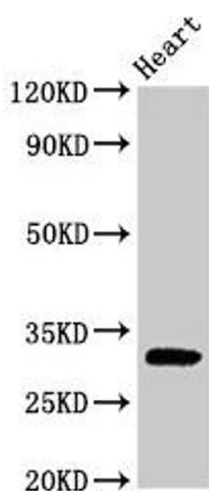
Immunohistochemistry

Image 1. Immunohistochemistry of paraffin-embedded human liver tissue using ABIN7165933 at dilution of 1:100



Western Blotting

Image 2. Western blot All lanes: PPP1R3B antibody at 6 μ g/mL + Mouse liver tissue Secondary Goat polyclonal to rabbit IgG at 1/10000 dilution Predicted band size: 33 kDa Observed band size: 33 kDa



Western Blotting

Image 3. Western Blot Positive WB detected in: Rat heart tissue All lanes: PPP1R3B antibody at 2.5 μ g/mL Secondary Goat polyclonal to rabbit IgG at 1/50000 dilution Predicted band size: 33 kDa Observed band size: 33 kDa

Please check the [product details page](#) for more images. Overall 4 images are available for ABIN7165933.