

Datasheet for ABIN7165941
anti-PPM1A antibody (AA 1-382)[Go to Product page](#)

2 Images

Overview

| | |
|----------------------|--|
| Quantity: | 100 µL |
| Target: | PPM1A |
| Binding Specificity: | AA 1-382 |
| Reactivity: | Human |
| Host: | Rabbit |
| Clonality: | Polyclonal |
| Conjugate: | This PPM1A antibody is un-conjugated |
| Application: | Western Blotting (WB), ELISA, Immunohistochemistry (IHC) |

Product Details

| | |
|-------------------|--|
| Immunogen: | Recombinant Human Protein phosphatase 1A protein (1-382AA) |
| Isotype: | IgG |
| Cross-Reactivity: | Human, Mouse |
| Purification: | Antigen Affinity Purified |

Target Details

| | |
|-------------------|---|
| Target: | PPM1A |
| Alternative Name: | PPM1A (PPM1A Products) |
| Background: | Background: Enzyme with a broad specificity. Negatively regulates TGF-beta signaling through dephosphorylating SMAD2 and SMAD3, resulting in their dissociation from SMAD4, nuclear |

Target Details

export of the SMADs and termination of the TGF-beta-mediated signaling. Dephosphorylates PRKAA1 and PRKAA2. Plays an important role in the termination of TNF-alpha-mediated NF-kappa-B activation through dephosphorylating and inactivating IKBKB/IKKB.

Aliases: Protein phosphatase 2C isoform alpha antibody, EC 3.1.3.16 antibody, FLJ42306 antibody, IA antibody, MGC9201 antibody, Mpp alpha antibody, PP2C alpha antibody, PP2C-alpha antibody, PP2CA antibody, PP2Calpha antibody, PPM 1A antibody, PPM1A antibody, PPM1A_HUMAN antibody, PPPM1A antibody, Protein phosphatase 1A (formerly 2C) magnesium dependent alpha isoform antibody, Protein phosphatase 1A antibody, Protein phosphatase 1A magnesium dependent alpha antibody, Protein phosphatase 2C alpha antibody, Protein phosphatase 2C alpha isoform antibody, Protein phosphatase 2C isoform alpha antibody, Protein phosphatase 1A antibody, Protein phosphatase, Mg2+/Mn2+ dependent, 1A antibody

UniProt: [P35813](#)

Application Details

Application Notes: Recommended dilution: WB:1:1000-1:5000, IHC:1:20-1:200,

Restrictions: For Research Use only

Handling

Format: Liquid

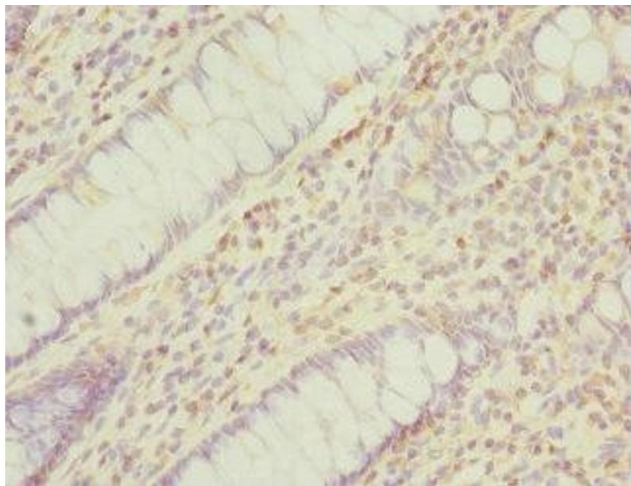
Buffer: PBS with 0.02 % sodium azide, 50 % glycerol, pH 7.3.

Preservative: Sodium azide

Precaution of Use: This product contains Sodium azide: a POISONOUS AND HAZARDOUS SUBSTANCE which should be handled by trained staff only.

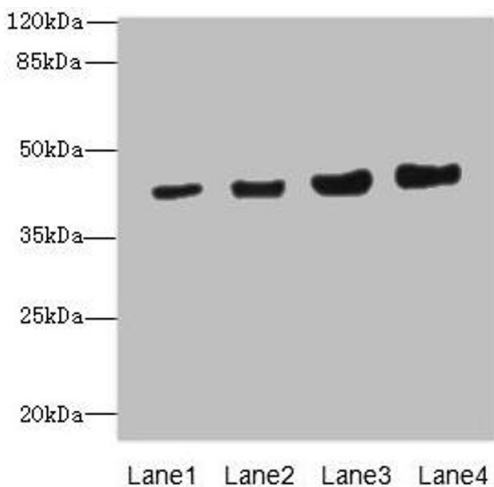
Storage: -20 °C,-80 °C

Storage Comment: Upon receipt, store at -20°C or -80°C. Avoid repeated freeze.



Immunohistochemistry

Image 1. Immunohistochemistry of paraffin-embedded human colon cancer using ABIN7165941 at dilution of 1:100



Western Blotting

Image 2. Western blot All lanes: PPM1A antibody at 6.88 μ g/mL Lane 1: HepG2 whole cell lysate Lane 2: SH-SY5Y whole cell lysate Lane 3: Mouse liver tissue Lane 4: Mouse brain tissue Secondary Goat polyclonal to rabbit IgG at 1/10000 dilution Predicted band size: 43, 36, 52 kDa Observed band size: 43 kDa