

Datasheet for ABIN7165944  
**anti-PPM1F antibody (AA 1-76)**[Go to Product page](#)

## 4 Images

## Overview

Quantity:	100 µg
Target:	PPM1F
Binding Specificity:	AA 1-76
Reactivity:	Human
Host:	Rabbit
Clonality:	Polyclonal
Conjugate:	This PPM1F antibody is un-conjugated
Application:	Western Blotting (WB), ELISA, Immunohistochemistry (IHC), Immunofluorescence (IF)

## Product Details

Immunogen:	Recombinant Human Protein phosphatase 1F protein (1-76AA)
Isotype:	IgG
Cross-Reactivity:	Human, Mouse
Purification:	>95%, Protein G purified

## Target Details

Target:	PPM1F
Alternative Name:	PPM1F ( <a href="#">PPM1F Products</a> )
Background:	Background: Dephosphorylates and concomitantly deactivates CaM-kinase II activated upon autophosphorylation, and CaM-kinases IV and I activated upon phosphorylation by CaM-kinase

## Target Details

kinase. Promotes apoptosis.

Aliases: Ca(2+)/calmodulin-dependent protein kinase phosphatase antibody, CaM-kinase phosphatase antibody, CAMKP antibody, CaMKPase antibody, FEM 2 antibody, hFEM-2 antibody, KIAA0015 antibody, Partner of PIX 2 antibody, POPX2 antibody, PP2C phosphatase antibody, Ppm1f antibody, PPM1F\_HUMAN antibody, Protein fem-2 homolog antibody, Protein phosphatase 1F (PP2C domain containing) antibody, Protein phosphatase 1F antibody, Protein phosphatase Mg2+/Mn2+ dependent 1F antibody

UniProt: [P49593](#)

Pathways: [Positive Regulation of Endopeptidase Activity](#)

## Application Details

Application Notes: Recommended dilution: WB:1:500-1:5000, IHC:1:20-1:200, IF:1:50-1:200,

Restrictions: For Research Use only

## Handling

Format: Liquid

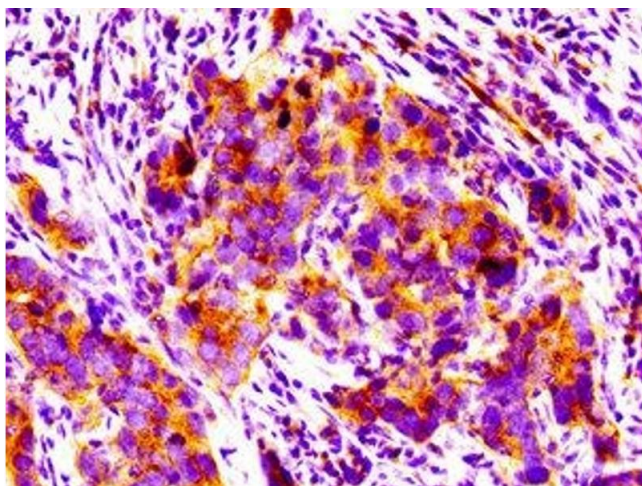
Buffer: Preservative: 0.03 % Proclin 300  
Constituents: 50 % Glycerol, 0.01M PBS, pH 7.4

Preservative: ProClin

Precaution of Use: This product contains ProClin: a POISONOUS AND HAZARDOUS SUBSTANCE which should be handled by trained staff only.

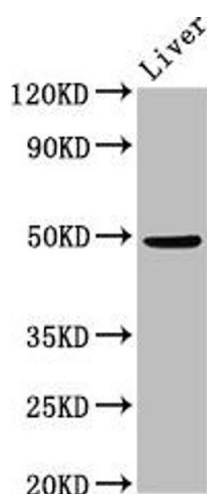
Storage: -20 °C,-80 °C

Storage Comment: Upon receipt, store at -20°C or -80°C. Avoid repeated freeze.



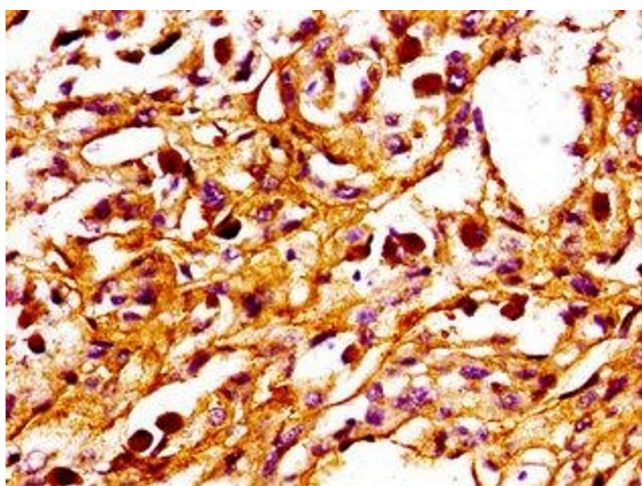
#### Immunohistochemistry

**Image 1.** IHC image of ABIN7165944 diluted at 1:100 and staining in paraffin-embedded human pancreatic cancer performed on a Leica Bond™ system. After dewaxing and hydration, antigen retrieval was mediated by high pressure in a citrate buffer (pH 6.0). Section was blocked with 10 % normal goat serum 30 min at RT. Then primary antibody (1 % BSA) was incubated at 4 °C overnight. The primary is detected by a biotinylated secondary antibody and visualized using an HRP conjugated SP system.



#### Western Blotting

**Image 2.** Western Blot Positive WB detected in: Mouse liver tissue All lanes: PPM1F antibody at 3 µg/mL Secondary Goat polyclonal to rabbit IgG at 1/50000 dilution Predicted band size: 50, 39 kDa Observed band size: 50 kDa



#### Immunohistochemistry

**Image 3.** IHC image of ABIN7165944 diluted at 1:100 and staining in paraffin-embedded human melanoma performed on a Leica Bond™ system. After dewaxing and hydration, antigen retrieval was mediated by high pressure in a citrate buffer (pH 6.0). Section was blocked with 10 % normal goat serum 30 min at RT. Then primary antibody (1 % BSA) was incubated at 4 °C overnight. The primary is detected by a biotinylated secondary antibody and visualized using an HRP conjugated SP system.

Please check the [product details page](#) for more images. Overall 4 images are available for ABIN7165944.