

Datasheet for ABIN7165952
anti-PPM1J antibody (AA 294-505)[Go to Product page](#)

2 Images

Overview

Quantity:	100 µL
Target:	PPM1J
Binding Specificity:	AA 294-505
Reactivity:	Human
Host:	Rabbit
Clonality:	Polyclonal
Conjugate:	This PPM1J antibody is un-conjugated
Application:	Western Blotting (WB), ELISA, Immunohistochemistry (IHC)

Product Details

Immunogen:	Recombinant Human Protein phosphatase 1J protein (294-505AA)
Isotype:	IgG
Cross-Reactivity:	Human
Purification:	Antigen Affinity Purified

Target Details

Target:	PPM1J
Alternative Name:	PPM1J (PPM1J Products)
Background:	PPM1J antibody, PPP2CZ antibody, Protein phosphatase 1J antibody, EC 3.1.3.16 antibody, Protein phosphatase 2C isoform zeta antibody, PP2C-zeta antibody

Target Details

UniProt: [Q5JR12](#)

Application Details

Application Notes: Recommended dilution: WB:1:1000-1:5000, IHC:1:20-1:200,

Restrictions: For Research Use only

Handling

Format: Liquid

Buffer: Preservative: 0.03 % Proclin 300
Constituents: 50 % Glycerol, 0.01M PBS, pH 7.4

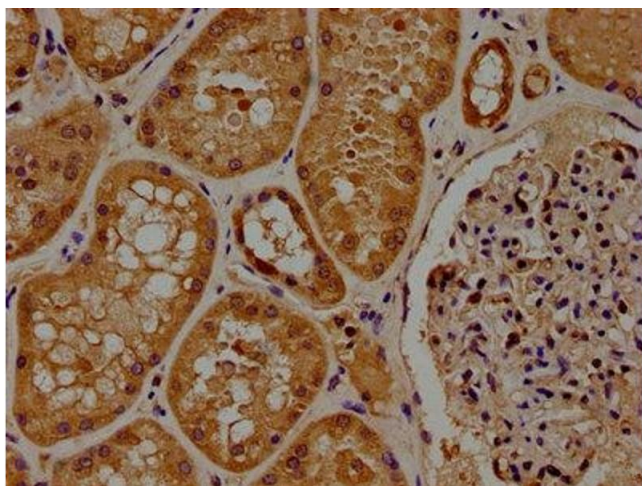
Preservative: ProClin

Precaution of Use: This product contains ProClin: a POISONOUS AND HAZARDOUS SUBSTANCE which should be handled by trained staff only.

Storage: -20 °C,-80 °C

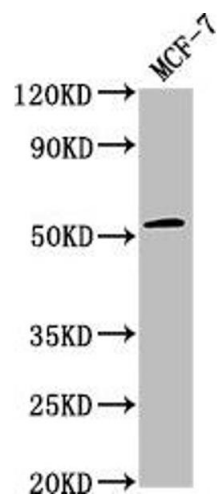
Storage Comment: Upon receipt, store at -20°C or -80°C. Avoid repeated freeze.

Images



Immunohistochemistry

Image 1. IHC image of ABIN7165952 diluted at 1:100 and staining in paraffin-embedded human kidney tissue performed on a Leica Bond™ system. After dewaxing and hydration, antigen retrieval was mediated by high pressure in a citrate buffer (pH 6.0). Section was blocked with 10 % normal goat serum 30 min at RT. Then primary antibody (1 % BSA) was incubated at 4 °C overnight. The primary is detected by a biotinylated secondary antibody and visualized using an HRP conjugated SP system.



Western Blotting

Image 2. Western Blot Positive WB detected in: MCF-7 whole cell lysate All lanes: PPM1J antibody at 1:2000 Secondary Goat polyclonal to rabbit IgG at 1/50000 dilution Predicted band size: 55, 34 kDa Observed band size: 55 kDa