



[Go to Product page](#)

Datasheet for ABIN7165960
anti-PPM1L antibody (AA 128-343)

1 Image

Overview

Quantity:	100 µL
Target:	PPM1L
Binding Specificity:	AA 128-343
Reactivity:	Human
Host:	Rabbit
Clonality:	Polyclonal
Application:	ELISA, Immunohistochemistry (IHC)

Product Details

Immunogen:	Recombinant Human Protein phosphatase 1L protein (128-343AA)
Isotype:	IgG
Cross-Reactivity:	Human
Purification:	Antigen Affinity Purified

Target Details

Target:	PPM1L
Alternative Name:	PPM1L (PPM1L Products)
Background:	Background: Acts as a suppressor of the SAPK signaling pathways by associating with and dephosphorylating MAP3K7/TAK1 and MAP3K5, and by attenuating the association between MAP3K7/TAK1 and MAP2K4 or MAP2K6. Aliases: PPM1L antibody, PP2CE antibody, Protein phosphatase 1L antibody, EC 3.1.3.16

Target Details

antibody, Protein phosphatase 1-like antibody, Protein phosphatase 2C isoform epsilon antibody, PP2C-epsilon antibody

UniProt: [Q5SGD2](#)

Application Details

Application Notes: Recommended dilution: IHC:1:20-1:200,

Restrictions: For Research Use only

Handling

Format: Liquid

Buffer: Preservative: 0.03 % Proclin 300
Constituents: 50 % Glycerol, 0.01M PBS, pH 7.4

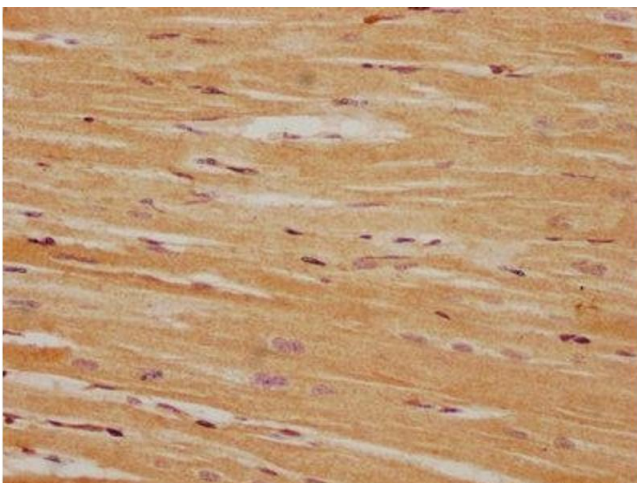
Preservative: ProClin

Precaution of Use: This product contains ProClin: a POISONOUS AND HAZARDOUS SUBSTANCE which should be handled by trained staff only.

Storage: -20 °C,-80 °C

Storage Comment: Upon receipt, store at -20°C or -80°C. Avoid repeated freeze.

Images



Immunohistochemistry

Image 1. IHC image of ABIN7165960 diluted at 1:100 and staining in paraffin-embedded human heart tissue performed on a Leica Bond™ system. After dewaxing and hydration, antigen retrieval was mediated by high pressure in a citrate buffer (pH 6.0). Section was blocked with 10 % normal goat serum 30 min at RT. Then primary antibody (1 % BSA) was incubated at 4 °C overnight. The primary is detected by a biotinylated secondary antibody and visualized using an HRP conjugated SP system.