

Datasheet for ABIN7165976
anti-SSH1 antibody (AA 928-1049)[Go to Product page](#)

2 Images

Overview

Quantity:	100 µg
Target:	SSH1
Binding Specificity:	AA 928-1049
Reactivity:	Human
Host:	Rabbit
Clonality:	Polyclonal
Conjugate:	This SSH1 antibody is un-conjugated
Application:	ELISA, Immunohistochemistry (IHC), Immunofluorescence (IF)

Product Details

Immunogen:	Recombinant Human Protein phosphatase Slingshot homolog 1 protein (928-1049AA)
Isotype:	IgG
Cross-Reactivity:	Human
Purification:	>95%, Protein G purified

Target Details

Target:	SSH1
Alternative Name:	SSH1 (SSH1 Products)
Background:	Background: Protein phosphatase which regulates actin filament dynamics. Dephosphorylates and activates the actin binding/depolymerizing factor cofilin, which subsequently binds to actin

Target Details

filaments and stimulates their disassembly. Inhibitory phosphorylation of cofilin is mediated by LIMK1, which may also be dephosphorylated and inactivated by this protein.

Aliases: AW551225 antibody, Coro1c antibody, coronin, actin binding protein 1C antibody, Gm1394 antibody, Gm1395 antibody, hSSH-1L antibody, mSSH 1L antibody, OTTMUSP00000031415 antibody, Protein phosphatase Slingshot homolog 1 antibody, Slingshot 1 antibody, slingshot 1L antibody, slingshot homolog 1 antibody, slingshot like 1 antibody, Slingshot1 antibody, SSH 1 antibody, SSH 1L antibody, SSH-1L antibody, SSH-like protein 1 antibody, Ssh1 antibody, SSH1_HUMAN antibody

UniProt: [Q8WYL5](#)

Pathways: [CXCR4-mediated Signaling Events](#)

Application Details

Application Notes: Recommended dilution: IHC:1:200-1:500, IF:1:50-1:200,

Restrictions: For Research Use only

Handling

Format: Liquid

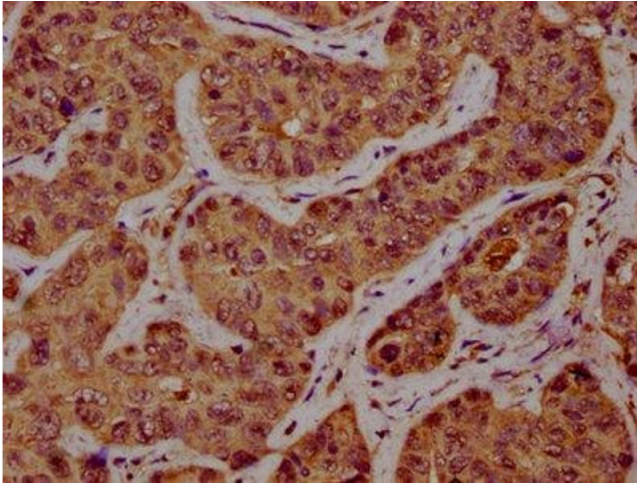
Buffer: Preservative: 0.03 % Proclin 300
Constituents: 50 % Glycerol, 0.01M PBS, pH 7.4

Preservative: ProClin

Precaution of Use: This product contains ProClin: a POISONOUS AND HAZARDOUS SUBSTANCE which should be handled by trained staff only.

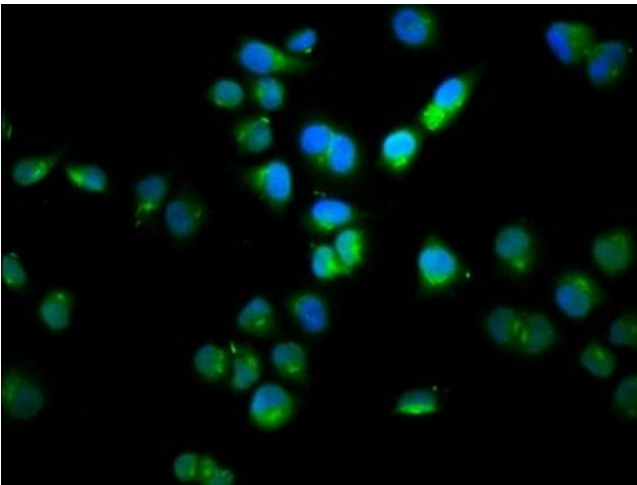
Storage: -20 °C, -80 °C

Storage Comment: Upon receipt, store at -20°C or -80°C. Avoid repeated freeze.



Immunohistochemistry

Image 1. IHC image of ABIN7165976 diluted at 1:300 and staining in paraffin-embedded human liver cancer performed on a Leica Bond™ system. After dewaxing and hydration, antigen retrieval was mediated by high pressure in a citrate buffer (pH 6.0). Section was blocked with 10% normal goat serum 30min at RT. Then primary antibody (1% BSA) was incubated at 4°C overnight. The primary is detected by a biotinylated secondary antibody and visualized using an HRP conjugated SP system.



Immunofluorescence

Image 2. Immunofluorescence staining of HeLa cells with ABIN7165976 at 1:100, counter-stained with DAPI. The cells were fixed in 4% formaldehyde, permeabilized using 0.2% Triton X-100 and blocked in 10% normal Goat Serum. The cells were then incubated with the antibody overnight at 4°C. The secondary antibody was Alexa Fluor 488-conjugated AffiniPure Goat Anti-Rabbit IgG(H+L).