

Datasheet for ABIN7166002  
**anti-RD3 antibody (AA 1-195)**



[Go to Product page](#)

2 Images

### Overview

Quantity:	100 µg
Target:	RD3
Binding Specificity:	AA 1-195
Reactivity:	Human
Host:	Rabbit
Clonality:	Polyclonal
Conjugate:	This RD3 antibody is un-conjugated
Application:	ELISA, Western Blotting (WB), Immunohistochemistry (IHC)

### Product Details

Immunogen:	Recombinant Human Protein RD3 protein (1-195AA)
Isotype:	IgG
Cross-Reactivity:	Human, Mouse
Purification:	Antigen Affinity Purified

### Target Details

Target:	RD3
Alternative Name:	RD3 ( <a href="#">RD3 Products</a> )
Background:	RD3 antibody, C1orf36 antibody, Protein RD3 antibody, Retinal degeneration protein 3 antibody
UniProt:	<a href="#">Q7Z3Z2</a>

## Application Details

---

Application Notes: Recommended dilution: WB:1:1000-1:5000, IHC:1:20-1:200,

---

Restrictions: For Research Use only

---

## Handling

---

Format: Liquid

---

Buffer: Preservative: 0.03 % Proclin 300  
Constituents: 50 % Glycerol, 0.01M PBS, PH 7.4

---

Preservative: ProClin

---

Precaution of Use: This product contains ProClin: a POISONOUS AND HAZARDOUS SUBSTANCE which should be handled by trained staff only.

---

Storage: -20 °C,-80 °C

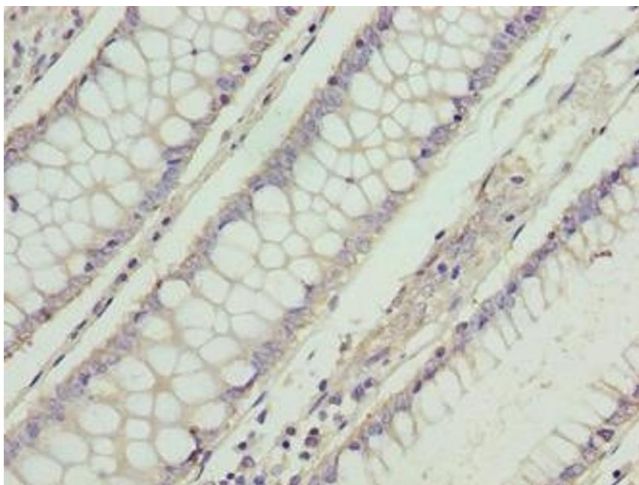
---

Storage Comment: Upon receipt, store at -20°C or -80°C. Avoid repeated freeze.

---

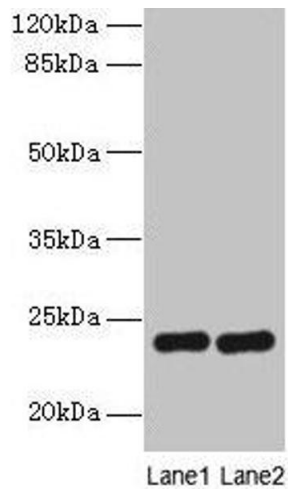
## Images

---



### Immunohistochemistry

**Image 1.** Immunohistochemistry of paraffin-embedded human colon cancer using ABIN7166002 at dilution of 1:100



### Western Blotting

**Image 2.** Western blot All lanes: RD3 antibody at 0.5 µg/mL  
Lane 1: Mouse thymus tissue Lane 2: Human placenta tissue  
Secondary Goat polyclonal to rabbit IgG at 1/10000 dilution  
Predicted band size: 23 kDa Observed band size: 23 kDa