

Datasheet for ABIN7166010  
**anti-RIPPLY2 antibody (AA 1-76)**[Go to Product page](#)

## 1 Image

## Overview

Quantity:	100 µg
Target:	RIPPLY2
Binding Specificity:	AA 1-76
Reactivity:	Human
Host:	Rabbit
Clonality:	Polyclonal
Conjugate:	This RIPPLY2 antibody is un-conjugated
Application:	ELISA, Immunohistochemistry (IHC)

## Product Details

Immunogen:	Recombinant Human Protein ripply2 protein (1-76AA)
Isotype:	IgG
Cross-Reactivity:	Human
Purification:	>95%, Protein G purified

## Target Details

Target:	RIPPLY2
Alternative Name:	RIPPLY2 ( <a href="#">RIPPLY2 Products</a> )
Background:	Background: Plays a role in somitogenesis. Required for somite segregation and establishment of rostrocaudal polarity in somites (By similarity).

## Target Details

Aliases: RIPPLY2 antibody, C6orf159 antibody, Protein ripply2 antibody

UniProt: [Q5TAB7](#)

Pathways: [Tube Formation](#)

## Application Details

Application Notes: Recommended dilution: IHC:1:200-1:500,

Restrictions: For Research Use only

## Handling

Format: Liquid

Buffer: Preservative: 0.03 % Proclin 300  
Constituents: 50 % Glycerol, 0.01M PBS, pH 7.4

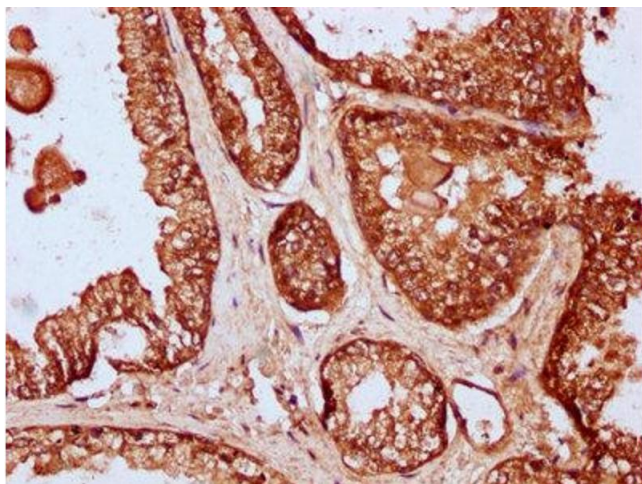
Preservative: ProClin

Precaution of Use: This product contains ProClin: a POISONOUS AND HAZARDOUS SUBSTANCE which should be handled by trained staff only.

Storage: -20 °C,-80 °C

Storage Comment: Upon receipt, store at -20°C or -80°C. Avoid repeated freeze.

## Images



### Immunohistochemistry

**Image 1.** IHC image of ABIN7166010 diluted at 1:200 and staining in paraffin-embedded human prostate cancer performed on a Leica Bond™ system. After dewaxing and hydration, antigen retrieval was mediated by high pressure in a citrate buffer (pH 6.0). Section was blocked with 10% normal goat serum 30min at RT. Then primary antibody (1% BSA) was incubated at 4°C overnight. The primary is detected by a biotinylated secondary antibody and visualized using an HRP conjugated SP system.