



[Go to Product page](#)

Datasheet for ABIN7166022
anti-ROGDI antibody (AA 14-287)

3 Images

Overview

Quantity:	100 µg
Target:	ROGDI
Binding Specificity:	AA 14-287
Reactivity:	Human
Host:	Rabbit
Clonality:	Polyclonal
Conjugate:	This ROGDI antibody is un-conjugated
Application:	Western Blotting (WB), ELISA, Immunohistochemistry (IHC)

Product Details

Immunogen:	Recombinant Human Protein rogdi homolog protein (14-287AA)
Isotype:	IgG
Cross-Reactivity:	Human
Purification:	Antigen Affinity Purified

Target Details

Target:	ROGDI
Alternative Name:	ROGDI (ROGDI Products)
Background:	Background: May act as a positive regulator of cell proliferation. Aliases: FLJ22386 antibody, KTZS antibody, Leucine zipper domain protein antibody, Protein

Target Details

rogdi homolog antibody, rogdi antibody, rogdi homolog (Drosophila) antibody, rogdi, Drosophila, homolog of antibody, ROGDI_HUMAN antibody

UniProt: [Q9GZN7](#)

Application Details

Application Notes: Recommended dilution: WB:1:500-1:2000, IHC:1:20-1:200,

Restrictions: For Research Use only

Handling

Format: Liquid

Buffer: Preservative: 0.03 % Proclin 300
Constituents: 50 % Glycerol, 0.01M PBS, PH 7.4

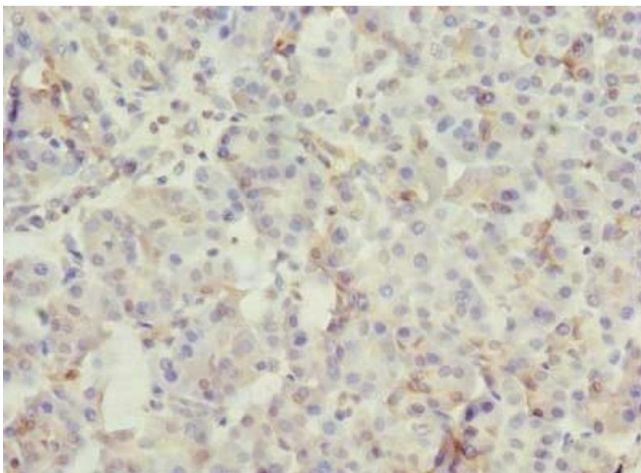
Preservative: ProClin

Precaution of Use: This product contains ProClin: a POISONOUS AND HAZARDOUS SUBSTANCE which should be handled by trained staff only.

Storage: -20 °C,-80 °C

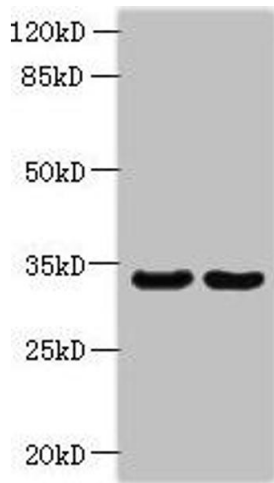
Storage Comment: Upon receipt, store at -20°C or -80°C. Avoid repeated freeze.

Images



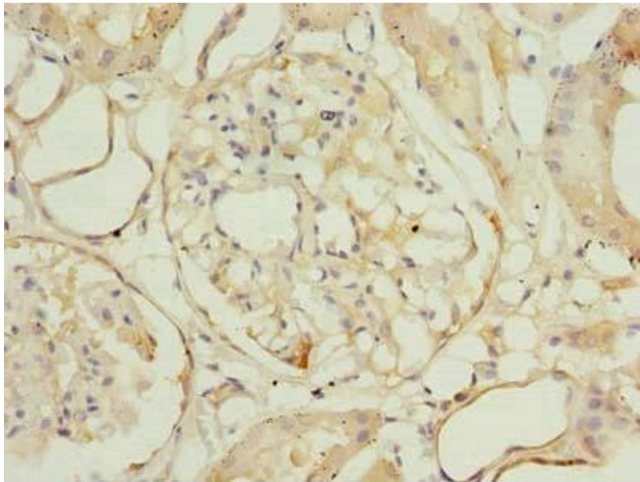
Immunohistochemistry

Image 1. Immunohistochemistry of paraffin-embedded human pancreatic tissue using ABIN7166022 at dilution of 1:100



Western Blotting

Image 2. Western blot All lanes: ROGDI antibody at 1.2 μ g/mL Lane 1: HeLa whole cell lysate Lane 2: K562 whole cell lysate Secondary Goat polyclonal to rabbit IgG at 1/10000 dilution Predicted band size: 33 kDa Observed band size: 33 kDa



Immunohistochemistry

Image 3. Immunohistochemistry of paraffin-embedded human kidney tissue using ABIN7166022 at dilution of 1:100