

Datasheet for ABIN7166096
anti-SAV1 antibody (AA 1-210)

5 Images

[Go to Product page](#)

Overview

Quantity:	100 µL
Target:	SAV1
Binding Specificity:	AA 1-210
Reactivity:	Human
Host:	Rabbit
Clonality:	Polyclonal
Conjugate:	This SAV1 antibody is un-conjugated
Application:	Western Blotting (WB), ELISA, Immunohistochemistry (IHC), Immunofluorescence (IF), Immunoprecipitation (IP)

Product Details

Immunogen:	Recombinant Human Protein salvador homolog 1 protein (1-210AA)
Isotype:	IgG
Cross-Reactivity:	Human, Mouse
Purification:	Antigen Affinity Purified

Target Details

Target:	SAV1
Alternative Name:	SAV1 (SAV1 Products)
Background:	Background: Regulator of STK3/MST2 and STK4/MST1 in the Hippo signaling pathway which

Target Details

plays a pivotal role in organ size control and tumor suppression by restricting proliferation and promoting apoptosis. The core of this pathway is composed of a kinase cascade wherein STK3/MST2 and STK4/MST1, in complex with its regulatory protein SAV1, phosphorylates and activates LATS1/2 in complex with its regulatory protein MOB1, which in turn phosphorylates and inactivates YAP1 oncoprotein and WWTR1/TAZ. Phosphorylation of YAP1 by LATS1/2 inhibits its translocation into the nucleus to regulate cellular genes important for cell proliferation, cell death, and cell migration. SAV1 is required for STK3/MST2 and STK4/MST1 activation and promotes cell-cycle exit and terminal differentiation in developing epithelial tissues. Plays a role in centrosome disjunction by regulating the localization of NEK2 to centrosomes, and its ability to phosphorylate CROCC and CEP250. In conjunction with STK3/MST2, activates the transcriptional activity of ESR1 through the modulation of its phosphorylation.

Aliases: 1700040G09Rik antibody, 45 kDa WW domain protein antibody, hWW 45 antibody, hWW45 antibody, Protein salvador homolog 1 antibody, salvador family WW domain containing protein 1 antibody, salvador homolog 1 (Drosophila) antibody, Salvador homolog 1 antibody, Salvador, Drosophila, homolog of antibody, SAV 1 antibody, SAV antibody, SAV1 antibody, SAV1_HUMAN antibody, WW 45 antibody, WW domain containing antibody, WW domain-containing adaptor 45 antibody, WW domain-containing protein, 45-KD antibody, WW45 antibody, WW45 protein antibody, WWP 4 antibody, WWP4 antibody

UniProt: [Q9H4B6](#)

Pathways: [Stem Cell Maintenance](#)

Application Details

Application Notes: Recommended dilution: WB:1:500-1:2000, IHC:1:20-1:200, IF:1:50-1:200, IP:1:200-1:2000,

Restrictions: For Research Use only

Handling

Format: Liquid

Buffer: PBS with 0.02 % sodium azide, 50 % glycerol, pH 7.3.

Preservative: Sodium azide

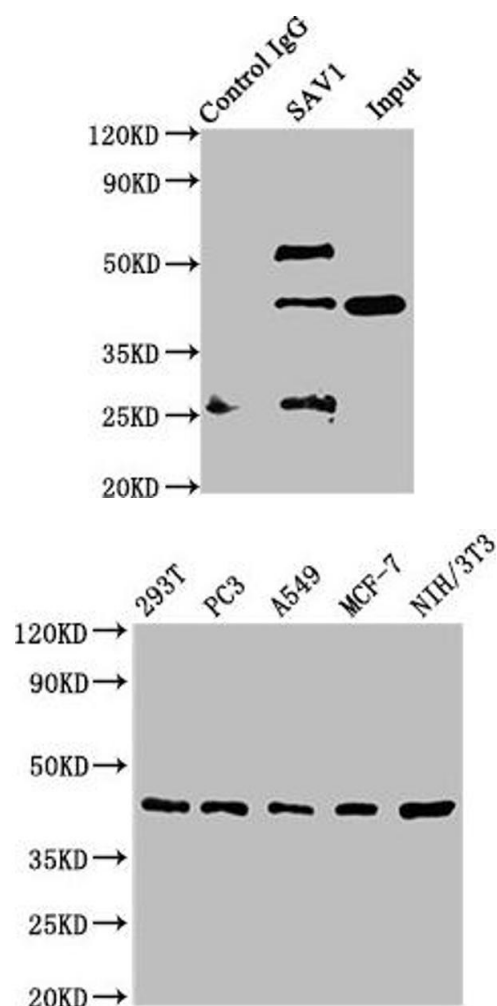
Precaution of Use: This product contains Sodium azide: a POISONOUS AND HAZARDOUS SUBSTANCE which should be handled by trained staff only.

Handling

Storage: -20 °C, -80 °C

Storage Comment: Upon receipt, store at -20°C or -80°C. Avoid repeated freeze.

Images



Western Blotting

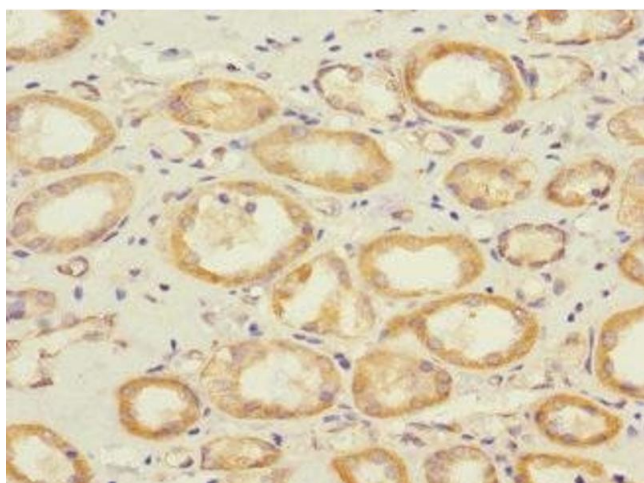
Image 1. Immunoprecipitating SAV1 in NIH/3T3 whole cell lysate Lane 1: Rabbit control IgG instead of ABIN7166096 in NIH/3T3 whole cell lysate. For western blotting, a HRP-conjugated Protein G antibody was used as the secondary antibody (1/2000) Lane 2: ABIN7166096 (5 µg) + NIH/3T3 whole cell lysate (500 µg) Lane 3: NIH/3T3 whole cell lysate (20 µg)

Western Blotting

Image 2. Western Blot Positive WB detected in: 293T whole cell lysate, PC-3 whole cell lysate, A549 whole cell lysate, MCF-7 whole cell lysate, NIH/3T3 whole cell lysate All lanes: SAV1 antibody at 1.62 µg/mL Secondary Goat polyclonal to rabbit IgG at 1/50000 dilution Predicted band size: 45 kDa Observed band size: 45 kDa

Immunohistochemistry

Image 3. Immunohistochemistry of paraffin-embedded human kidney tissue using ABIN7166096 at dilution of 1:100



Please check the [product details page](#) for more images. Overall 5 images are available for ABIN7166096.