

Datasheet for ABIN7166102
anti-SEL1L antibody (AA 22-181)

3 Images

[Go to Product page](#)

Overview

Quantity:	100 µg
Target:	SEL1L
Binding Specificity:	AA 22-181
Reactivity:	Human
Host:	Rabbit
Clonality:	Polyclonal
Conjugate:	This SEL1L antibody is un-conjugated
Application:	ELISA, Immunohistochemistry (IHC), Immunofluorescence (IF)

Product Details

Immunogen:	Recombinant Human Protein sel-1 homolog 1 protein (22-181AA)
Isotype:	IgG
Cross-Reactivity:	Human
Purification:	>95%, Protein G purified

Target Details

Target:	SEL1L
Alternative Name:	SEL1L (SEL1L Products)
Background:	Background: Plays a role in the endoplasmic reticulum quality control (ERQC) system also called ER-associated degradation (ERAD) involved in ubiquitin-dependent degradation of

Target Details

misfolded endoplasmic reticulum proteins (PubMed:16186509). Enhances SYVN1 stability.

Plays a role in LPL maturation and secretion. Required for normal differentiation of the pancreas epithelium, and for normal exocrine function and survival of pancreatic cells. May play a role in Notch signaling.

Aliases: IBD2 antibody, PRO1063 antibody, Protein sel-1 homolog 1 antibody, SE1L1_HUMAN antibody, Sel 1 like protein antibody, Sel 1 suppressor of lin 12 like antibody, Sel-1L antibody, SEL1 LIKE antibody, Sel1l antibody, SEL1LIKE antibody, Suppressor of lin-12-like protein 1 antibody, TSA305 antibody, UNQ128 antibody, UNQ128/PRO1063 antibody

UniProt: [Q9UBV2](#)

Application Details

Application Notes: Recommended dilution: IHC:1:20-1:200, IF:1:20-1:200,

Restrictions: For Research Use only

Handling

Format: Liquid

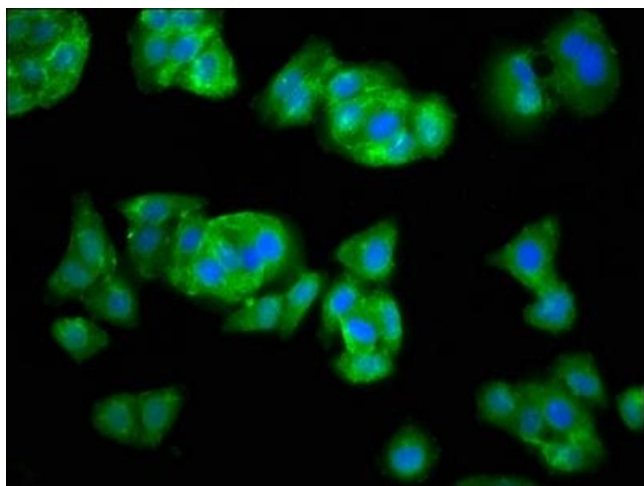
Buffer: Preservative: 0.03 % Proclin 300
Constituents: 50 % Glycerol, 0.01M PBS, pH 7.4

Preservative: ProClin

Precaution of Use: This product contains ProClin: a POISONOUS AND HAZARDOUS SUBSTANCE which should be handled by trained staff only.

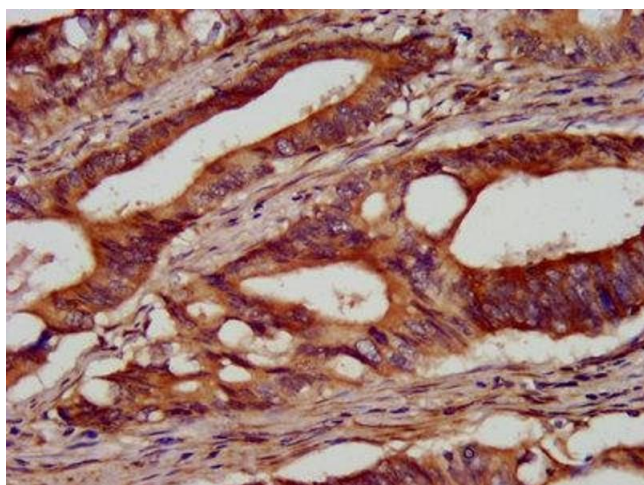
Storage: -20 °C,-80 °C

Storage Comment: Upon receipt, store at -20°C or -80°C. Avoid repeated freeze.



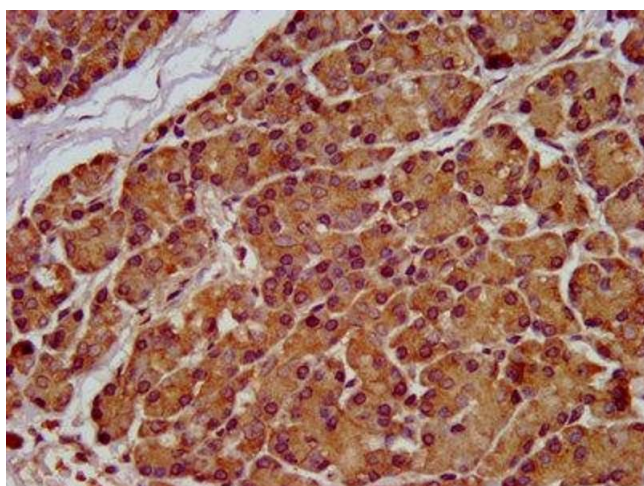
Immunofluorescence

Image 1. Immunofluorescence staining of HepG2 cells with ABIN7166102 at 1:33, counter-stained with DAPI. The cells were fixed in 4% formaldehyde, permeabilized using 0.2% Triton X-100 and blocked in 10% normal Goat Serum. The cells were then incubated with the antibody overnight at 4°C. The secondary antibody was Alexa Fluor 488-conjugated AffiniPure Goat Anti-Rabbit IgG(H+L).



Immunohistochemistry

Image 2. IHC image of ABIN7166102 diluted at 1:100 and staining in paraffin-embedded human colon cancer performed on a Leica Bond™ system. After dewaxing and hydration, antigen retrieval was mediated by high pressure in a citrate buffer (pH 6.0). Section was blocked with 10% normal goat serum 30min at RT. Then primary antibody (1% BSA) was incubated at 4°C overnight. The primary is detected by a biotinylated secondary antibody and visualized using an HRP conjugated SP system.



Immunohistochemistry

Image 3. IHC image of ABIN7166102 diluted at 1:100 and staining in paraffin-embedded human pancreatic tissue performed on a Leica Bond™ system. After dewaxing and hydration, antigen retrieval was mediated by high pressure in a citrate buffer (pH 6.0). Section was blocked with 10% normal goat serum 30min at RT. Then primary antibody (1% BSA) was incubated at 4°C overnight. The primary is detected by a biotinylated secondary antibody and visualized using an HRP conjugated SP system.