

Datasheet for ABIN7166106  
**anti-SET/TAF-I antibody (AA 147-235)**[Go to Product page](#)

## 1 Image

## Overview

Quantity:	100 µg
Target:	SET/TAF-I (SET)
Binding Specificity:	AA 147-235
Reactivity:	Human
Host:	Rabbit
Clonality:	Polyclonal
Conjugate:	This SET/TAF-I antibody is un-conjugated
Application:	Western Blotting (WB), ELISA

## Product Details

Immunogen:	Recombinant Human Protein SET protein (147-235AA)
Isotype:	IgG
Cross-Reactivity:	Human
Purification:	>95%, Protein G purified

## Target Details

Target:	SET/TAF-I (SET)
Alternative Name:	SET ( <a href="#">SET Products</a> )
Background:	Background: Multitasking protein, involved in apoptosis, transcription, nucleosome assembly and histone chaperoning. Isoform 2 anti-apoptotic activity is mediated by inhibition of the

## Target Details

GZMA-activated DNase, NME1. In the course of cytotoxic T-lymphocyte (CTL)-induced apoptosis, GZMA cleaves SET, disrupting its binding to NME1 and releasing NME1 inhibition. Isoform 1 and isoform 2 are potent inhibitors of protein phosphatase 2A. Isoform 1 and isoform 2 inhibit EP300/CREBBP and PCAF-mediated acetylation of histones (HAT) and nucleosomes, most probably by masking the accessibility of lysines of histones to the acetylases. The predominant target for inhibition is histone H4. HAT inhibition leads to silencing of HAT-dependent transcription and prevents active demethylation of DNA. Both isoforms stimulate DNA replication of the adenovirus genome complexed with viral core proteins, however, isoform 2 specific activity is higher.

Aliases: 2PP2A antibody, HLA DR associated protein II antibody, HLA-DR-associated protein II antibody, I 2PP2A antibody, I-2PP2A antibody, I2PP2A antibody, IGAAD antibody, Inhibitor of granzyme A activated DNase antibody, Inhibitor of granzyme A-activated DNase antibody, Inhibitor of GzmA-activated DNase antibody, inhibitor-2 of protein phosphatase-2A antibody, IPP2A2 antibody, PHAPII antibody, Phosphatase 2A inhibitor I2PP2A antibody, protein phosphatase type 2A inhibitor antibody, Protein SET antibody, Set antibody, SET nuclear oncogene antibody, SET translocation antibody, SET translocation (myeloid leukemia-associated) antibody, SET\_HUMAN antibody, TAF I antibody, TAF IBETA antibody, TAF-I antibody, TAFI antibody, Template activating factor I antibody, Template-activating factor I antibody, Template-Activating Factor-I, chromatin remodelling factor antibody

UniProt: [Q01105](#)

Pathways: [Apoptosis](#)

## Application Details

Application Notes: Recommended dilution: WB:1:500-1:5000,

Restrictions: For Research Use only

## Handling

Format: Liquid

Buffer: Preservative: 0.03 % Proclin 300  
Constituents: 50 % Glycerol, 0.01M PBS, pH 7.4

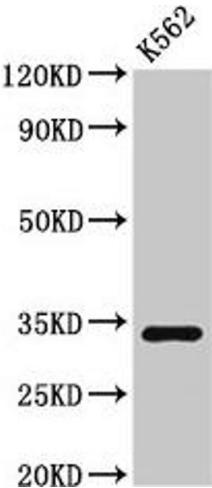
Preservative: ProClin

Precaution of Use: This product contains ProClin: a POISONOUS AND HAZARDOUS SUBSTANCE which should be handled by trained staff only.

Handling

Storage:	-20 °C,-80 °C
Storage Comment:	Upon receipt, store at -20°C or -80°C. Avoid repeated freeze.

Images



Western Blotting

**Image 1.** Western Blot Positive WB detected in: K562 whole cell lysate All lanes: SET antibody at 3 µg/mL Secondary Goat polyclonal to rabbit IgG at 1/50000 dilution Predicted band size: 34, 33, 31, 32 kDa Observed band size: 34 kDa