

Datasheet for ABIN7166124
anti-SHROOM2 antibody (AA 213-405)[Go to Product page](#)

2 Images

Overview

Quantity:	100 µg
Target:	SHROOM2
Binding Specificity:	AA 213-405
Reactivity:	Human
Host:	Rabbit
Clonality:	Polyclonal
Conjugate:	This SHROOM2 antibody is un-conjugated
Application:	ELISA, Immunohistochemistry (IHC), Immunofluorescence (IF)

Product Details

Immunogen:	Recombinant Human Protein Shroom2 protein (213-405AA)
Isotype:	IgG
Cross-Reactivity:	Human
Purification:	>95%, Protein G purified

Target Details

Target:	SHROOM2
Alternative Name:	SHROOM2 (SHROOM2 Products)
Background:	Background: May be involved in endothelial cell morphology changes during cell spreading. In the retinal pigment epithelium, may regulate the biogenesis of melanosomes and promote their

Target Details

association with the apical cell surface by inducing gamma-tubulin redistribution (By similarity).
Aliases: 4832440C16 antibody, Ab2-404 antibody, Apical like protein antibody, Apical like protein APXL protein antibody, apical protein of Xenopus-like antibody, Apical protein Xenopus laevis like antibody, apical protein, Xenopus laevis-like antibody, apical protein-like antibody, apical protein-like (Xenopus laevis) antibody, Apical-like protein antibody, APX homolog of Xenopus antibody, C630003H05Rik antibody, DKFZp781J074 antibody, FLJ39277 antibody, HSAPXL antibody, Liver regeneration-related protein LRRG167 antibody, OTTHUMP00000022887 antibody, Protein Apxl antibody, Protein Shroom2 antibody, Shrm2 antibody, SHRM2_HUMAN antibody, SHROOM 2 antibody, Shroom family member 2 antibody, shroom2 antibody

UniProt: [Q13796](#)

Pathways: [Cell-Cell Junction Organization](#), [Asymmetric Protein Localization](#)

Application Details

Application Notes: Recommended dilution: IHC:1:200-1:500, IF:1:50-1:200,

Restrictions: For Research Use only

Handling

Format: Liquid

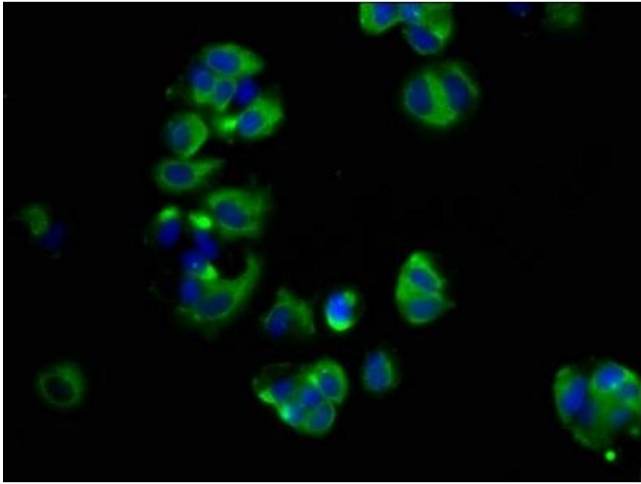
Buffer: Preservative: 0.03 % Proclin 300
Constituents: 50 % Glycerol, 0.01M PBS, pH 7.4

Preservative: ProClin

Precaution of Use: This product contains ProClin: a POISONOUS AND HAZARDOUS SUBSTANCE which should be handled by trained staff only.

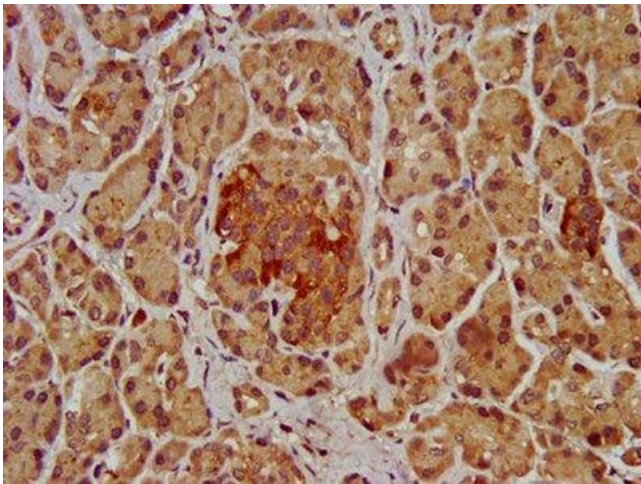
Storage: -20 °C,-80 °C

Storage Comment: Upon receipt, store at -20°C or -80°C. Avoid repeated freeze.



Immunofluorescence

Image 1. Immunofluorescence staining of MCF-7 cells with ABIN7166124 at 1:66, counter-stained with DAPI. The cells were fixed in 4% formaldehyde, permeabilized using 0.2% Triton X-100 and blocked in 10% normal Goat Serum. The cells were then incubated with the antibody overnight at 4°C. The secondary antibody was Alexa Fluor 488-conjugated AffiniPure Goat Anti-Rabbit IgG(H+L).



Immunohistochemistry

Image 2. IHC image of ABIN7166124 diluted at 1:200 and staining in paraffin-embedded human pancreatic tissue performed on a Leica Bond™ system. After dewaxing and hydration, antigen retrieval was mediated by high pressure in a citrate buffer (pH 6.0). Section was blocked with 10% normal goat serum 30min at RT. Then primary antibody (1% BSA) was incubated at 4°C overnight. The primary is detected by a biotinylated secondary antibody and visualized using an HRP conjugated SP system.