

Datasheet for ABIN7166128
anti-SHROOM3 antibody (AA 1309-1571)[Go to Product page](#)

2 Images

Overview

Quantity:	100 µg
Target:	SHROOM3
Binding Specificity:	AA 1309-1571
Reactivity:	Human
Host:	Rabbit
Clonality:	Polyclonal
Conjugate:	This SHROOM3 antibody is un-conjugated
Application:	ELISA, Immunohistochemistry (IHC), Immunofluorescence (IF)

Product Details

Immunogen:	Recombinant Human Protein Shroom3 protein (1309-1571AA)
Isotype:	IgG
Cross-Reactivity:	Human
Purification:	>95%, Protein G purified

Target Details

Target:	SHROOM3
Alternative Name:	SHROOM3 (SHROOM3 Products)
Background:	Background: Controls cell shape changes in the neuroepithelium during neural tube closure. Induces apical constriction in epithelial cells by promoting the apical accumulation of F-actin

Target Details

and myosin II, and probably by bundling stress fibers. Induces apicobasal cell elongation by redistributing gamma-tubulin and directing the assembly of robust apicobasal microtubule arrays (By similarity).

Aliases: APXL3 antibody, hShrmL antibody, MSTP013 antibody, Protein Shroom3 antibody, Shrm antibody, Shrm3 antibody, SHRM3_HUMAN antibody, ShrmL antibody, Shroom family member 3 antibody, Shroom-related protein antibody, shroom3 antibody

UniProt: [Q8TF72](#)

Pathways: [Tube Formation](#), [Asymmetric Protein Localization](#)

Application Details

Application Notes: Recommended dilution: IHC:1:20-1:200, IF:1:50-1:200,

Restrictions: For Research Use only

Handling

Format: Liquid

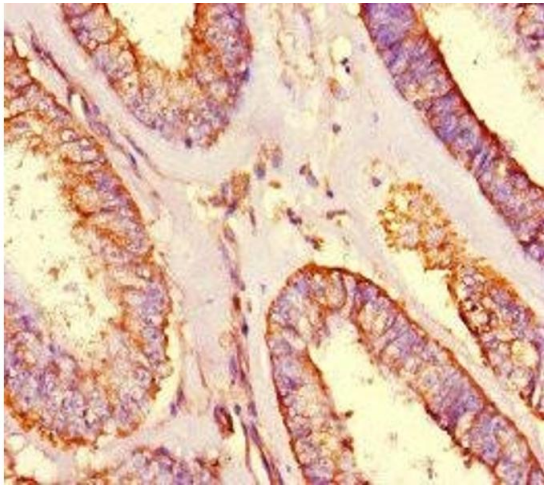
Buffer: Preservative: 0.03 % Proclin 300
Constituents: 50 % Glycerol, 0.01M PBS, PH 7.4

Preservative: ProClin

Precaution of Use: This product contains ProClin: a POISONOUS AND HAZARDOUS SUBSTANCE which should be handled by trained staff only.

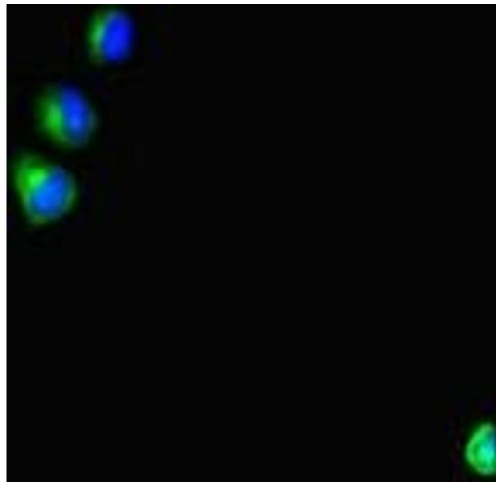
Storage: -20 °C,-80 °C

Storage Comment: Upon receipt, store at -20°C or -80°C. Avoid repeated freeze.



Immunohistochemistry

Image 1. Immunohistochemistry of paraffin-embedded human endometrial cancer using ABIN7166128 at dilution of 1:100



Immunofluorescence

Image 2. Immunofluorescent analysis of HepG2 cells using ABIN7166128 at dilution of 1:100 and Alexa Fluor 488-conjugated AffiniPure Goat Anti-Rabbit IgG(H+L)