



[Go to Product page](#)

Datasheet for ABIN7166156
anti-SSX1 antibody (AA 112-188)

2 Images

Overview

Quantity:	100 µg
Target:	SSX1
Binding Specificity:	AA 112-188
Reactivity:	Human
Host:	Rabbit
Clonality:	Polyclonal
Conjugate:	This SSX1 antibody is un-conjugated
Application:	ELISA, Immunofluorescence (IF), Immunohistochemistry (IHC)

Product Details

Immunogen:	Recombinant Human Protein SSX1 protein (112-188AA)
Isotype:	IgG
Cross-Reactivity:	Human
Purification:	>95%, Protein G purified

Target Details

Target:	SSX1
Alternative Name:	SSX1 (SSX1 Products)
Background:	Background: Could act as a modulator of transcription. Aliases: Cancer/testis antigen 5.1 antibody, Cancer/testis antigen family 5 member 1 antibody,

Target Details

CT5.1 antibody, MGC150425 antibody, MGC5162 antibody, Protein SSX1 antibody, sarcoma, synovial, X chromosome related 1 antibody, SSRC antibody, SSX1 antibody, SSX1_HUMAN antibody, Synovial sarcoma antibody, Synovial sarcoma, X breakpoint 1 antibody, X breakpoint 1 antibody

UniProt: [Q16384](#)

Application Details

Application Notes: Recommended dilution: IHC:1:20-1:200, IF:1:50-1:200,

Restrictions: For Research Use only

Handling

Format: Liquid

Buffer: Preservative: 0.03 % Proclin 300
Constituents: 50 % Glycerol, 0.01M PBS, pH 7.4

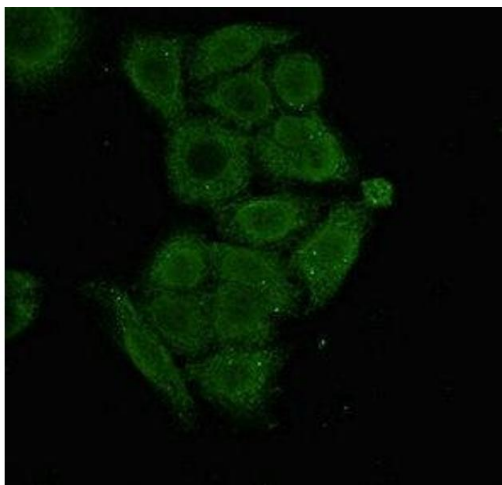
Preservative: ProClin

Precaution of Use: This product contains ProClin: a POISONOUS AND HAZARDOUS SUBSTANCE which should be handled by trained staff only.

Storage: -20 °C,-80 °C

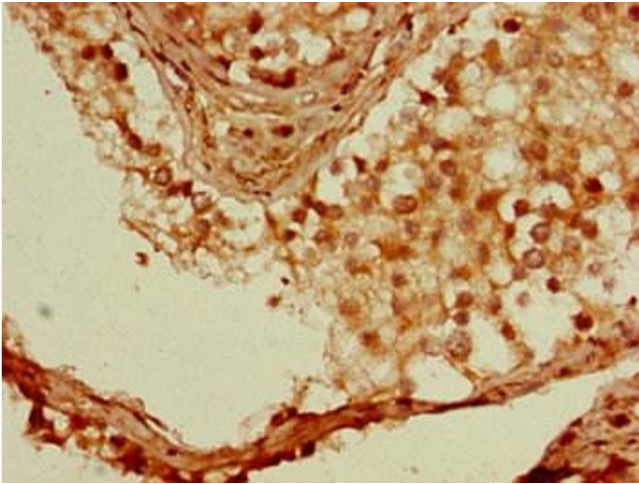
Storage Comment: Upon receipt, store at -20°C or -80°C. Avoid repeated freeze.

Images



Immunofluorescence

Image 1. Immunofluorescent analysis of PC-3 cells using ABIN7166156 at dilution of 1:100 and Alexa Fluor 488-conjugated AffiniPure Goat Anti-Rabbit IgG(H+L)



Immunohistochemistry

Image 2. Immunohistochemistry of paraffin-embedded human testis tissue using ABIN7166156 at dilution of 1:100