



[Go to Product page](#)

Datasheet for ABIN7166161
anti-SSX2 antibody (AA 1-188)

3 Images

Overview

Quantity:	100 µL
Target:	SSX2
Binding Specificity:	AA 1-188
Reactivity:	Human
Host:	Rabbit
Clonality:	Polyclonal
Conjugate:	This SSX2 antibody is un-conjugated
Application:	Western Blotting (WB), Immunohistochemistry (IHC), ELISA

Product Details

Immunogen:	Recombinant Human Protein SSX2 protein (1-188AA)
Isotype:	IgG
Cross-Reactivity:	Human
Purification:	Antigen Affinity Purified

Target Details

Target:	SSX2
Alternative Name:	SSX2 (SSX2 Products)
Background:	Background: Could act as a modulator of transcription. Aliases: Cancer/testis antigen 5.2 antibody, Cancer/testis antigen family 5, member 2a

Target Details

antibody, Cancer/testis antigen family 5, member 2b antibody, CT5.2 antibody, CT5.2A antibody, CT5.2b antibody, HD21 antibody, hom mel 40 antibody, HOM-MEL-40 antibody, MGC119055 antibody, MGC15364 antibody, MGC3884 antibody, Protein SSX2 antibody, RP11-552J9.2 antibody, sarcoma, synovial, X-chromosome related 2 antibody, SSx antibody, SSX2 antibody, SSX2-SYT fusion gene, included antibody, SSX2_HUMAN antibody, SSX2B antibody, Synovial sarcoma antibody, synovial sarcoma X breakpoint 2 antibody, Synovial sarcoma, X breakpoint 2B antibody, Tumor antigen HOM-MEL-40 antibody, X breakpoint 2 antibody

UniProt: [Q16385](#)

Application Details

Application Notes: Recommended dilution: WB:1:200-1:1000, IHC:1:20-1:200,

Restrictions: For Research Use only

Handling

Format: Liquid

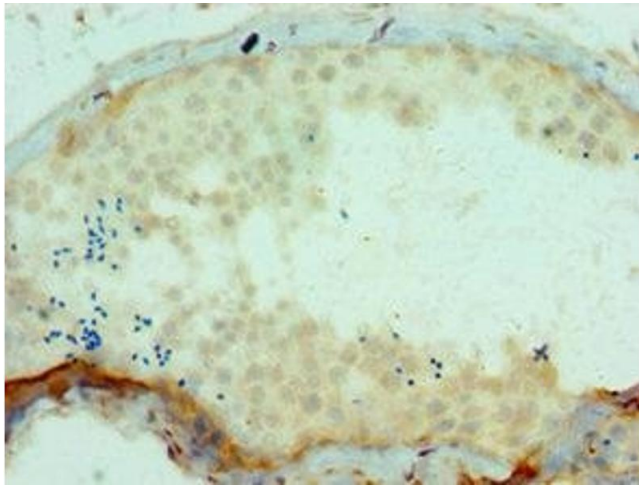
Buffer: PBS with 0.02 % sodium azide, 50 % glycerol, pH 7.3.

Preservative: Sodium azide

Precaution of Use: This product contains Sodium azide: a POISONOUS AND HAZARDOUS SUBSTANCE which should be handled by trained staff only.

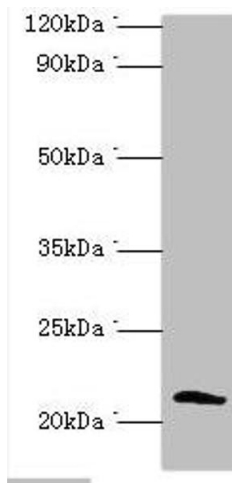
Storage: -20 °C,-80 °C

Storage Comment: Upon receipt, store at -20°C or -80°C. Avoid repeated freeze.



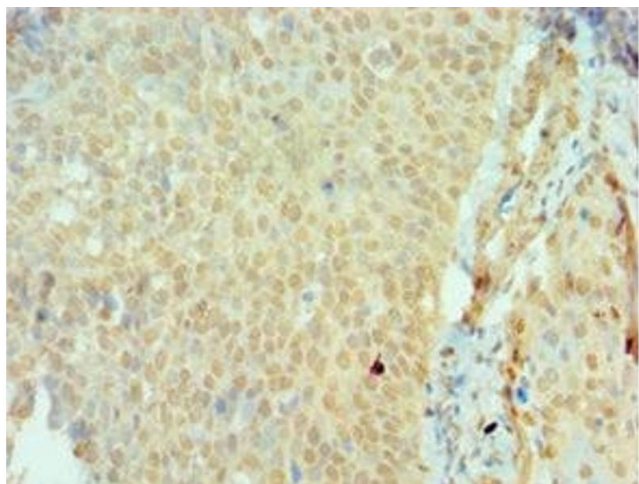
Immunohistochemistry

Image 1. Immunohistochemistry of paraffin-embedded human testis tissue using ABIN7166161 at dilution of 1:100



Western Blotting

Image 2. Western blot All lanes: Protein SSX2 antibody at 2 µg/mL + MDA-MB-231 whole cell lysate Secondary Goat polyclonal to rabbit IgG at 1/10000 dilution Predicted band size: 22, 26 kDa Observed band size: 22 kDa



Immunohistochemistry

Image 3. Immunohistochemistry of paraffin-embedded human cervical cancer using ABIN7166161 at dilution of 1:100