



[Go to Product page](#)

Datasheet for ABIN7166166
anti-SBNO2 antibody (AA 6-146)

1 Image

Overview

Quantity:	100 µg
Target:	SBNO2
Binding Specificity:	AA 6-146
Reactivity:	Human
Host:	Rabbit
Clonality:	Polyclonal
Conjugate:	This SBNO2 antibody is un-conjugated
Application:	ELISA, Immunofluorescence (IF)

Product Details

Immunogen:	Recombinant Human Protein strawberry notch homolog 2 protein (6-146AA)
Isotype:	IgG
Cross-Reactivity:	Human
Purification:	>95%, Protein G purified

Target Details

Target:	SBNO2
Alternative Name:	SBNO2 (SBNO2 Products)
Background:	Background: Acts as a transcriptional coregulator, that can have both coactivator and corepressor functions. Inhibits the DCSTAMP-repressive activity of TAL1, hence enhancing the

Target Details

access of the transcription factor MITF to the DC-STAMP promoter in osteoclast. Plays a role in bone homeostasis, required as a positive regulator in TNFSF11//RANKL-mediated osteoclast fusion via a DCSTAMP-dependent pathway. May also be required in the regulation of osteoblast differentiation (By similarity). Involved in the transcriptional corepression of NF-kappaB in macrophages (PubMed:18025162). Plays a role as a regulator in the proinflammatory cascade (PubMed:18025162).

Aliases: SBNO2 antibody, KIAA0963Protein strawberry notch homolog 2 antibody

UniProt: [Q9Y2G9](#)

Application Details

Application Notes: Recommended dilution: IF:1:20-1:200,

Restrictions: For Research Use only

Handling

Format: Liquid

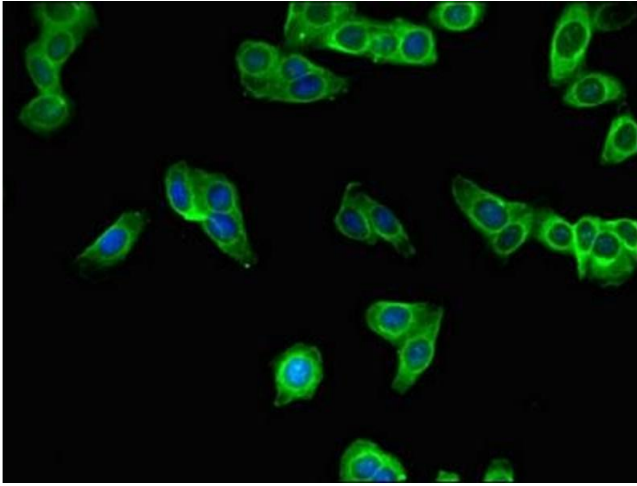
Buffer: Preservative: 0.03 % Proclin 300
Constituents: 50 % Glycerol, 0.01M PBS, PH 7.4

Preservative: ProClin

Precaution of Use: This product contains ProClin: a POISONOUS AND HAZARDOUS SUBSTANCE which should be handled by trained staff only.

Storage: -20 °C,-80 °C

Storage Comment: Upon receipt, store at -20°C or -80°C. Avoid repeated freeze.



Immunofluorescence

Image 1. Immunofluorescent analysis of HepG2 cells using ABIN7166166 at dilution of 1:100 and Alexa Fluor 488-conjugated AffiniPure Goat Anti-Rabbit IgG(H+L)